

IF UNDELIVERABLE - DO NOT RETURN

INDUSTRIAL UNIFORM CO.
143 SO. ROCK ISLAND
WICHITA, KANSAS



PARTS MANAGER

SAFE DRIVER

SERVICE SALESMAN

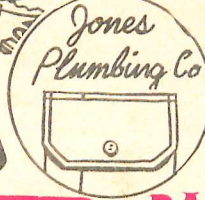
SERVICE MANAGER

FOREMAN

MAINTENANCE

LETTERING & EMBLEMS

TELL YOUR STORY



Cafe
525 N Franklin
Wilkes-Barre, Pa.

BACK LETTERING

UNIFORMS THAT ADVERTISE

55% "DACRON"
ACID RESISTANT!

Wash 'n' Wear

COVERALLS



SERVICE DEPARTMENT

PARTS DEPARTMENT

SERVICE

DRIP DRY

LUBRICATION

INSPECTOR

WORK SAFELY

BODY SHOP FOREMAN

ASST. PARTS MGR.

BODY SHOP

SALES SERVICE

SHOP FOREMAN



Pants, \$3.95

Shirts, \$2.25

Jackets, \$5.95

\$4.25

NO ORDER TOO SMALL

TELEVISION SERVICE

DEDUCT 10% ON \$100.00 ORDERS

INDUSTRIAL UNIFORM CO.

143 South Rock Island
Wichita, Kansas

FREE DELIVERY

for savings we make in bookkeeping if you send check with order. Money refunded instantly if not pleased.

SHIP TO _____ Date _____

Street and Number _____

City _____ Zone _____ State _____

Indicate if Payment C. O. D. _____ or by Check _____ Amount Enclosed \$ _____



NECK

Measure neck at collarband. The number of inches is your correct size.



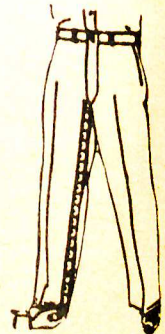
SLEEVE

Bend arm—Measure from bottom of collar at center back around elbow to far end of wristbone.



CHEST

Place tape high up under arm pits over clothing to be worn under the garment.



INSEAM

Measure from crotch to top of shoe heel.

WAIST

Take Measurements around waist just above top of hip bone.

	PRODUCT FRONT EMBLEM	SIZE	FIRST NAME OVER POCKET	HOW MANY	PRICE EACH	TOTAL
SHIRTS — Color and Lot Number	25c	NECK AND SLEEVE LENGTH	10c a word			
PANTS — Color and Lot Number		WAIST AND INSEAM				
COVERALLS - SHOPCOATS - JACKETS — Color and Lot Number		CHEST, HEIGHT AND WEIGHT				
CAPS — Color and Lot Number (Be Sure and Give Size)		SIZES 6½ to 7¾				
BACK LETTERING (YOUR FIRM NAME) SEWED INTO BACK OF GARMENT YOUR CHOICE COLOR THREAD @8¢ PER LETTER (Two-Inch Block Letter)			COLOR THREAD			

ORDER PLACED BY _____ **DEDUCT 10% ON \$100.00 ORDERS**

We stock practically all front emblems in the automotives, gasoline, bottling, implement and industrial field. We attach these to our garments at cost (25c) as a service to our uniform customers. The same emblems may be purchased without uniforms at 50c each.

1. SEND NO MONEY . . . PAY POSTMAN C.O.D.
2. OPEN ACCOUNT TO RATED FIRMS.
3. **FREE DELIVERY** When Check With Order



8¢ PER LETTER 2 INCH BLOCK OR SCRIPT

BACK LETTERING



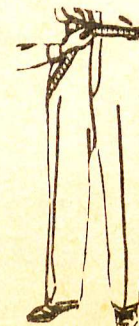
10¢ PER WORD

Many men like to have their **FIRST** name over the pocket of their shirts, etc. This is written in script at 10c per word, as pictured at the left.

Your firm name can be written in script over the pocket of shirts, etc., at 10c per word as pictured at the right.

Kansas Sales Tax **KANSAS ORDERS ONLY**

TOTAL	
-------	--

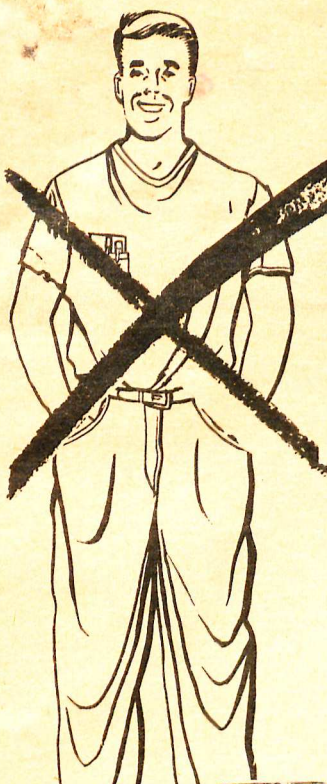
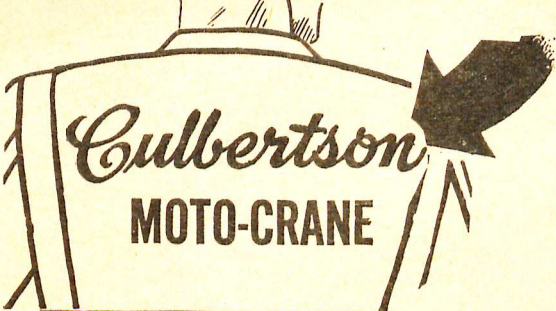


OTHER CATALOGUE WILL BE ENCLOSED

HIS OR THIS

LETTERING & EMBLEMS TELL YOUR STORY

BACK LETTERING 8¢ PER LETTER
EMBROIDERED INTO OUR GARMENTS 2 INCH BLOCK OR SCRIPT



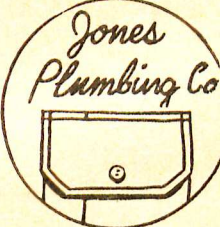
Lincoln
MERCURY



Kaiser
Aluminum



- AAA
- Amoco
- Allis-Chalmers
- Belt Gas
- Buick
- Boeing
- Bell System
- Bordens
- Cadillac
- Chevrolet
- Chrysler
- Chrysler Air-Temp
- Chrysler-Plymouth
- Cities Service
- Conoco
- Co-Op.
- Case
- Carrier
- Seasna
- Coleman
- Champion
- Diclie Gas and Oil
- D-X
- Deep Rock
- Diamond Oil
- Dodge
- Dodge-Plymouth
- DeSoto
- DeSoto-Plymouth
- Dearborn Farm Equipment
- Dr. Pepper
- Double Cola
- Drive In Theatre
- Derby
- Esso
- En-Ar-Co
- Excide
- Ford Crest
- Ferguson System
- Ford Tractor
- Fisher Body
- Fruehauf Trailers
- Frontier Gas
- Fleetwing
- Frigidaire
- Firestone
- Fairmont
- Gulf
- General Electric
- GMC
- AC
- Hotpoint
- Jeep
- CITIS SERVICE
- REO
- STANDARD
- Cessna
- Trim
- bryant
- Keen Kutter
- TRIM
- Sealtest ICE CREAM
- GENEVA
- RCA
- Whirlpool
- MEPAR
- Philco
- York
- ESKO
- ESSO
- YORK
- GENEVA
- RCA
- Whirlpool
- MEPAR



Your firm name can be written in script over the pocket of shirts, etc., at 10¢ per word as pictured above.

We stock practically all front emblems in the automotive, gasoline, implement and industrial field. 25¢ Attached to our garments. 50¢ when ordered separately.

If you want an individualized machine made Swiss Emblem of your product or trade mark, we can supply that too.

INDUSTRIAL UNIFORM CO.

143 S. Rock Island
Wichita, Kansas

FREE

MENS COTTON UNIFORM MATERIALS

GENTLEMEN: Without obligation on my part, please send your FREE swatch cards

FIRM NAME _____

ADDRESS _____ CITY _____

STATE _____ TO ATTENTION OF _____

PRODUCTS SOLD BY YOUR FIRM _____

WRITE FOR Free SWATCH CARDS

MENS COTTON UNIFORM MATERIALS

Evergreen (Bottlegreen) Shirts, Pants, Jackets, Coveralls, Shopcoats,

EVERGREEN ARMY TWILL UNIFORM SHIRT\$3.75
 LOT 72 (Give Neck and Sleeve Length)

This uniform shirt is made different from the ordinary work shirt. Upon examination you will be pleased with the construction. It is reinforced and bartacked at all points of strain to stand the gaff. The sturdy 6 oz. Army Twill material is Sanforized so that it will not shrink and Vat Dyed so that it will hold its color after countless washings. Our shirts are cut in sleeve lengths so that every man gets a perfect fit. The buttons are strong and durable and won't come off. Two front pockets with buttoned pocket flap and a pencil section make this a utility shirt in every respect. The long tail will not pull out when you bend over. It is rugged and durable, and is constructed to pay off in long wear and appearance.

EVERGREEN ARMY TWILL SPORT SHIRT (SHORT SLEEVE)\$3.45
 LOT 76 (Neck Size)

This sport shirt is made with a two way collar so that it can be worn with a tie or open at the neck. The same Army Twill material is used and the same reinforced construction is built into the sport model. The shirt tail is long for comfort. Every feature is built into the garment for appearance, long wear and neatness on the job.

EVERGREEN ARMY TWILL UNIFORM PANT\$4.75
 LOT 71 (Give Waist and In-seam)

This heavy Army Twill uniform pant is made to take the heavy work and strain encountered in the motor service field. It is reinforced and bartacked at all points of strain. The 8.5 oz. Army Twill pant is made with a heavy Talon zipper. The pockets are made of heavy drill for durability. The entire pant including the waistband is Sanforized for comfort, fit and appearance. The material is Vat Dyed and its color stays. This uniform pant is made with the finest features in dress pants, yet it is constructed quite differently than dress pants to give you freedom as well as strength in every seam.

EVERGREEN ARMY TWILL ZIPPER JACKET\$5.95
 LOT 73 (Chest Size)

Here is an Army Twill jacket that is made of the same material as the uniform pant. It is extremely neat on the job and tough, too, just the thing for warmth and appearance. The comfort is a big surprise to anyone not familiar with the INDUSTRIAL UNIFORM JACKET. Naturally the jacket is Sanforized and Vat Dyed. It is reinforced and bartacked at all points of strain and has a full length zipper front, adjustable waistband, two roomy patch pockets with button down flaps and full cut sleeves with neat adjustable cuffs.

EVERGREEN ARMY TWILL ZIPPER JACKET LINED\$6.95
 LOT 73L (Chest Size)

So many men like extra warmth in their jackets that we make available the INDUSTRIAL UNIFORM JACKET with a washable lining. If you want extra warmth be sure to order the lined jacket. All other features are the same as the unlined jacket.

EVERGREEN COVERALLS\$7.25
 LOT 17 (Give Chest, Height and Weight)

The Coverall is comfortable. It will not bind or draw because it is made with a Free Action Back that allows the perfect freedom of movement. The material is the finest Twill herringbone. Sanforized and Vat Dyed so that it will not shrink or fade. All points of stress are reinforced and bartacked. The buttons are rust proof and will not come off. The garment is constructed with an in-set belt for appearance and comfort.

EVERGREEN SHOPCOAT\$6.35
 LOT 117 (Chest Size)

In addition to a shop coat looking neat and business like, it is a real clothing saver. Pit coats (shopcoats) are made of the same material as the coverall. They are constructed for heavy duty wear. A full belt with a buckle is made into the coat and the buttons are rust proof.

EVERGREEN ARMY TWILL FLIGHT CAP3 FOR \$2.95
 LOT 70F (Sizes 6½ to 7¾)

EVERGREEN ARMY TWILL CAPTOPS2 FOR \$1.50
 LOT 70T (Sizes 6½ to 7¾)

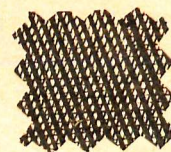
CAPBASE FOR CHAUFFEUR CAPS\$1.00
 LOT 70B (Sizes 6½ to 7¾)

EVERGREEN OVERSEAS CAP3 FOR \$2.95
 LOT 700 (Sizes 6½ to 7¾)

SHIRTS
 PANT & JACKET
 MATERIAL.

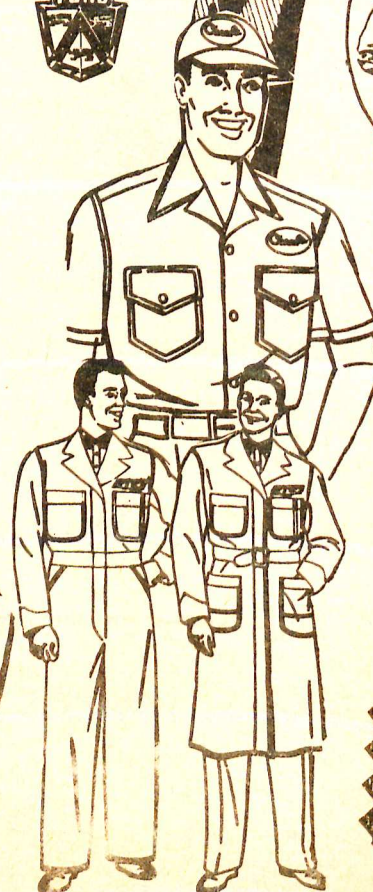
JACKET

\$5.95

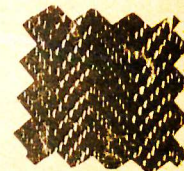


**MONEY BACK
 IF NOT PLEASED**

Pants,
 \$4.75



COVERALL
 AND
 SHOPCOAT
 MATERIAL

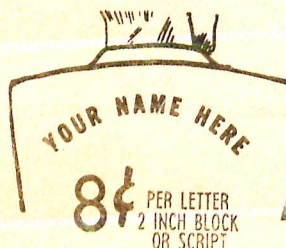


BLOCK → SMITHS

Service ← SCRIPT
 OUR EMBROIDERED LETTERS WILL NOT FADE

INDUSTRIAL UNIFORM CO.

143 S. Rock Island Wichita 2, Kansas



1. SEND NO MONEY . . . PAY POSTMAN C.O.D
2. OPEN ACCOUNT TO RATED FIRMS.
3. FREE DELIVERY When Check With Order

Tan Shirts, Pants, Jackets, Shopcoats, and Caps.

TAN ARMY TWILL UNIFORM SHIRT..... \$3.50
 LOT 32 (Give Neck and Sleeve Length)

This uniform shirt is made different from the ordinary work shirt. Upon examination you will be pleased with the construction. It is reinforced and bartacked at all points of strain to stand the gaff. The sturdy 6 oz. Army Twill material is Sanforized so that it will not shrink and Vat Dyed so that it will hold its color after countless washings. Our shirts are cut in sleeve lengths so that every man gets a perfect fit. The buttons are strong and durable and won't come off. Two front pockets with buttoned pocket flap and a pencil section make this a utility shirt in every respect. The long tail will not pull out when you bend over. It is rugged and durable, and is constructed to pay off in long wear and appearance.

TAN POPLIN SPORT SHIRT (SHORT SLEEVE) \$2.25
 LOT 36 (Neck Size)

This shirt is a very light weight garment but wears like iron. Sanforized and vat dyed, with short sleeves and 2-Way collar.

TAN ARMY TWILL UNIFORM PANT..... \$3.95
 LOT 31 (Give Waist and In-seam)

This heavy Army Twill uniform pant is made to take the heavy work and strain encountered in the motor service field. The 8.5 oz. Army Twill pant is made with a heavy Talon zipper. The pockets are made of heavy drill for durability. The entire pant including the waistband is Sanforized and Vat Dyed.

TAN ARMY TWILL ZIPPER JACKET LINED \$6.95
 LOT 33L (Chest Size)

So many men like extra warmth in their jackets that we make available the INDUSTRIAL UNIFORM JACKET with a washable lining. Here's an Army Twill jacket that is made of the same material as the uniform pant. It is extremely neat on the job and tough, too. Just the thing for warmth and appearance. The comfort is a big surprise to anyone not familiar with the INDUSTRIAL UNIFORM JACKET. Naturally the jacket is Sanforized and Vat Dyed. It is reinforced and bartacked at all points of strain and has a full length zipper front, adjustable waistband, two roomy patch pockets with button down flaps and full cut sleeves with neat adjustable cuffs.

TAN HERRINGBONE TWILL SHOPCOAT..... \$6.25
 LOT 113 (Chest Size)

In addition to a shop coat looking neat and business like, it is a real clothing saver. Pit coats (shopcoats) are made of the same material as the coverall. They are constructed for heavy duty wear. A full belt with a buckle is made into the coat and the buttons are rust proof.



3 FOR \$2.95
 FLIGHT CAP



CHAUFFEUR CAPS



OVERSEAS CAP

3 FOR \$2.95

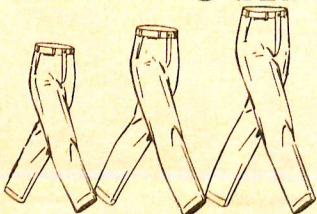
TAN ARMY TWILL FLIGHT CAP..... 3 FOR \$2.95
 LOT 30F (Sizes 6½ to 7¾)

TAN ARMY TWILL CHAUFFEUR CAPTOPS 2 FOR \$1.50
 LOT 30T (Sizes 6½ to 7¾)

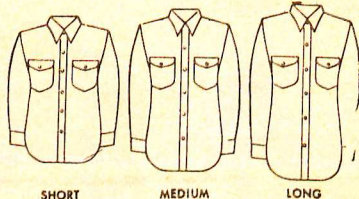
CAPBASE FOR CHAUFFEUR CAPS \$1.00
 (Sizes 6½ to 7¾)

TAN OVERSEAS CAP 3 FOR \$2.95
 LOT 300 (Sizes 6½ to 7¾)

UNIFORMS - tell your story!



The correct and comfortable fit for men of any build. The rise of each waist is perfectly proportioned for the persons height and inseam length.



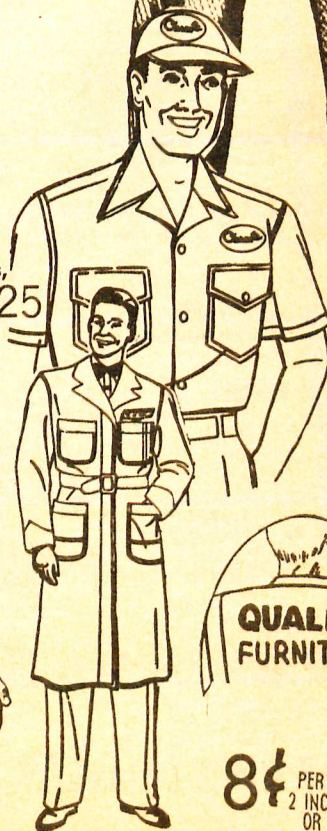
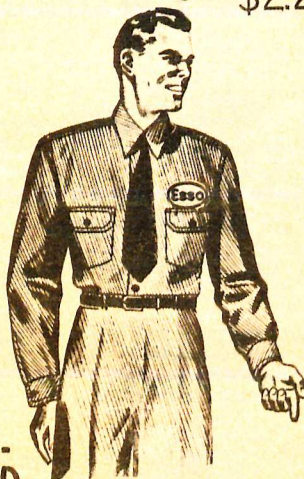
SHORT

MEDIUM

LONG

Three sleeve lengths and three body lengths in each neck size to fit men of any build or height perfectly.

AT ONCE DELIVERY..



Shirts,
 \$2.25

Shopcoats,
 \$6.25

Pants,
 \$3.95

PANT & JACKET
 MATERIAL.



INDUSTRIAL UNIFORM CO.
 143 S. Rock Island Wichita 2, Kansas

**MONEY BACK - -
 IF NOT PLEASED**

8¢ PER LETTER
 2 INCH BLOCK
 OR SCRIPT

Navy Blue Shirts, Pants, Jackets, and Caps.

NAVY BLUE ARMY TWILL SHIRT (CONVERTIBLE COLLAR)\$3.75
 LOT 92A Give Neck and Sleeve Length)

This uniform shirt is made different from the ordinary work shirt. The sturdy 6 oz. Army Twill material is Sanforized so that it will not shrink and Vat Dyed. Our shirts are cut in sleeve lengths. Two front pockets with buttoned pocket flap.

NAVY ARMY TWILL PANT \$4.95
 LOT 91 (Give Waist and In-Seam)

This heavy Army Twill uniform pant is made to take the heavy work and strain encountered in the motor service field. It is reinforced and bartacked at all points of strain. The 8.5 oz. Army Twill pant is made with a heavy Talon zipper. The pockets are made of heavy drill for durability. The entire pant including the waistband is Sanforized for comfort, fit and appearance. The material is Vat Dyed and its color stays. This uniform pant is made with the finest features in dress pants, yet it is constructed quite differently than dress pants to give you freedom as well as strength in every seam.

NAVY BLUE ARMY TWILL ZIPPER JACKET \$5.95
 LOT 93A (Chest Size)

Here is an Army Twill jacket that is made of the same material as the uniform pant. It is extremely neat on the job and tough, too, just the thing for warmth and appearance. The comfort is a big surprise to anyone not familiar with the INDUSTRIAL UNIFORM JACKET. Naturally the jacket is Sanforized and Vat Dyed. It is reinforced and bartacked at all points of strain and has a full length zipper front, adjustable waistband, two roomy patch pockets with button down flaps and full cut sleeves with neat adjustable cuffs.

NAVY BLUE ARMY TWILL ZIPPER JACKET LINED \$6.95
 LOT 93L (Give Chest Size)

So many men like extra warmth in their jackets that we make available the INDUSTRIAL UNIFORM JACKET with a washable lining. If you want extra warmth be sure to order the lined jacket. All other features are the same as the unlined jacket.



3 FOR \$2.95

FLIGHT CAP



CHAUFFEUR



3 FOR \$2.95
 OVERSEAS CAP

NAVY BLUE ARMY TWILL FLIGHT CAPS 3 FOR \$2.95

LOT 90F (Sizes 6½ to 7¾)

NAVY BLUE OVERSEAS CAP 3 FOR \$2.95

LOT 900 (Sizes 6½ to 7¾)

NAVY BLUE ARMY TWILL CAPTOP 2 FOR \$1.50

LOT 90T (Sizes 6½ to 7¾)

CAPBASE FOR CHAUFFEUR CAP \$1.00

LOT 90B (Sizes 6½ to 7¾)

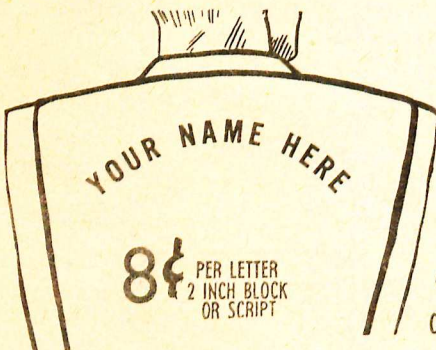
WHITE FLIGHT CAP 3 FOR \$2.95

LOT 20F (Sizes 6½ to 7¾)

WHITE FLIGHT CAP WITH NAVY BLUE TRIM 3 FOR \$2.95

LOT 13F (Sizes 6½ to 7¾)

UNIFORMS THAT ADVERTISE



BLOCK → SMITHS

Service ← SCRIPT

OUR EMBROIDERED LETTERS WILL NOT FADE



FRONT EMBLEM 25¢
 We stock practically all front emblems in the automotive, gasoline, bottling, implement and industrial field. 25¢ attached to our uniforms. Unattached separate emblems, 50¢.

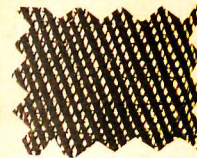
For your own product or trade mark emblems, write for prices and quantities.

**MONEY BACK
 IF NOT PLEASED**

PREPAID

When Check With Order
 Open Account to Rated Firms
 C.O.D. If You Prefer

PANT & JACKET MATERIAL.



Jackets,
 \$5.95



Pants,
 \$4.95



Willard



INDUSTRIAL UNIFORM CO.
 143 S. Rock Island Wichita 2, Kansas

AT ONCE DELIVERY

ORDER SHIRT ONE OR 5,000 TODAY

Forest Green (Olive Drab) Shirts, Pants, Jackets, and Caps.

FOREST GREEN ARMY TWILL UNIFORM SHIRT\$3.75.
 LOT 82 (Give Neck and Sleeve Length)

This uniform shirt is made different from the ordinary work shirt. Upon examination you will be pleased with the construction. It is reinforced and bartacked at all points of strain to stand the gaff. The sturdy 6 oz. Army Twill material is Sanforized so that it will not shrink and Vat Dyed so that it will hold its color after countless washings. Our shirts are cut in sleeve lengths so that every man gets a perfect fit. The buttons are strong and durable and won't come off. Two front pockets with buttoned pocket flap and a pencil section make this a utility shirt in every respect. The long tail will not pull out when you bend over. It is rugged and durable, and is constructed to pay off in long wear and appearance.

FOREST GREEN ARMY TWILL SPORT SHIRT (SHORT SLEEVE).....\$3.45
 LOT 86 (Neck Size)

This sport shirt is made with a two way collar so that it can be worn with a tie or open at the neck. The same Army Twill material is used and the same reinforced construction is built into the sport model. The shirt tail is long for comfort. Every feature is built into the garment for appearance, long wear and neatness on the job.

FOREST GREEN ARMY TWILL PANT..... \$4.95
 LOT 81 (Give Waist and In-seam)

This heavy Army Twill uniform pant is made to take the heavy work and strain encountered in the motor service field. It is reinforced and bartacked at all points of strain. The 8.5 oz. Army Twill pant is made with a heavy Talon zipper. The pockets are made of heavy drill for durability. The entire pant including the waistband is Sanforized for comfort, fit and appearance. The material is Vat Dyed and its color stays. This uniform pant is made with the finest features in dress pants, yet it is constructed quite differently than dress pants to give you freedom as well as strength in every seam.

FOREST GREEN ARMY TWILL ZIPPER JACKET\$5.95
 LOT 83 (Chest Size)

Here is an Army Twill jacket that is made of the same material as the uniform pant. It is extremely neat on the job and tough, too, just the thing for warmth and appearance. The comfort is a big surprise to anyone not familiar with the **INDUSTRIAL UNIFORM JACKET**. Naturally the jacket is Sanforized and Vat Dyed. It is reinforced and bartacked at all points of strain and has a full length zipper front, adjustable waistband, two roomy patch pockets with button down flaps and full cut sleeves with neat adjustable cuffs.

FOREST GREEN ARMY TWILL ZIPPER JACKET LINED \$6.95
 LOT 83L (Chest Size)

So many men like extra warmth in their jackets that we make available the **INDUSTRIAL UNIFORM JACKET** with a washable lining. If you want extra warmth be sure to order the lined jacket. All other features are the same as the unlined jacket.

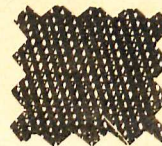
FOREST GREEN ARMY TWILL FLIGHT CAP 3 FOR 2.95
 LOT 80F (Sizes 6½ to 7¾)

FORREST GREEN ARMY TWILL CAPTOP 2 FOR \$1.50
 LOT 80T (Sizes 6½ to 7¾)

CAPBASE FOR CHAUFFEUR CAP \$1.00
 LOT 80B (Sizes 6½ to 7¾)

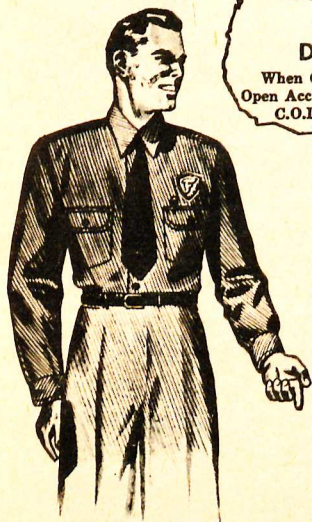
FOREST GREEN OVERSEAS CAP 3 FOR \$2.95
 LOT 800 (Sizes 6½ to 7¾)

PANT & JACKET MATERIAL.



AT ONCE DELIVERY.

Jackets,
\$5.95

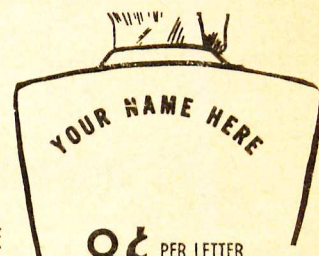


**MONEY BACK
IF NOT PLEASED**

**UNIFORMS THAT
ADVERTISE**

BLOCK → SMITHS

Service ← SCRIPT
 OUR EMBROIDERED LETTERS WILL NOT FADE



INDUSTRIAL UNIFORM CO.

143 S. Rock Island Wichita 2, Kansas

Postman Blue Shirts, Pants, Jackets, Coveralls, Shopcoats, and Caps.

POSTMAN BLUE ARMY TWILL UNIFORM SHIRT\$3.75

LOT 62 (Give Neck and Sleeve Length)

This uniform shirt is made different from the ordinary work shirt. Upon examination you will be pleased with the construction. It is reinforced and bartacked at all points of strain to stand the gaff. The sturdy 6 oz. Army Twill material is Sanforized so that it will not shrink and Vat Dyed so that it will hold its color after countless washings. Our shirts are cut in sleeve lengths so that every man gets a perfect fit. The buttons are strong and durable and won't come off. Two front pockets with buttoned pocket flap and a pencil section make this a utility shirt in every respect. The long tail will not pull out when you bend over. It is rugged and durable, and is constructed to pay off in long wear and appearance.

POSTMAN BLUE ARMY TWILL SPORT SHIRT (SHORT SLEEVE)\$3.50

LOT 66 (Neck Size)

This sport shirt is made with a two way collar so that it can be worn with a tie or open at the neck. The same Army Twill material is used and the same reinforced construction is built into the sport model. The shirt tail is long for comfort. Every feature is built into the garment for appearance, long wear and neatness on the job.

POSTMAN BLUE ARMY TWILL PANT\$4.75

LOT 61 (Give Waist and In-seam)

This heavy Army Twill uniform pant is made to take the heavy work and strain encountered in the motor service field. It is reinforced and bartacked at all points of strain. The 8.5 oz. Army Twill pant is made with a heavy Talon zipper. The pockets are made of heavy drill for durability. The entire pant including the waistband is Sanforized for comfort, fit and appearance. The material is Vat Dyed and its color stays. This uniform pant is made with the finest features in dress pants, yet it is constructed quite differently than dress pants to give you freedom as well as strength in every seam.

POSTMAN BLUE ARMY TWILL JACKET\$5.95

LOT 63 (Give Chest Size)

Here is an Army Twill jacket that is made of the same material as the uniform pant. It is extremely neat on the job and tough, too, just the thing for warmth and appearance. The comfort is a big surprise to anyone not familiar with the INDUSTRIAL UNIFORM JACKET. Naturally the jacket is Sanforized and Vat Dyed. It is reinforced and bartacked at all points of strain and has a full length zipper front, adjustable waistband, two roomy patch pockets with button down flaps and full cut sleeves with neat adjustable cuffs.

POSTMAN BLUE ARMY TWILL LINED JACKET\$6.95

LOT 63L (Furnish Chest Size)

So many men like extra warmth in their jackets that we make available the INDUSTRIAL UNIFORM JACKET with a washable lining. If you want extra warmth be sure to order the lined jacket. All other features are the same as the unlined jacket.

POSTMAN BLUE COVERALL\$6.95

LOT 11 (Give Chest, Height and Weight)

The Coverall is comfortable. It will not bind or draw because it is made with a Free Action Back that allows the perfect freedom of movement. The material is the finest Twill herringbone. Sanforized and Vat Dyed so that it will not shrink or fade. All points of stress are reinforced and bartacked. The buttons are rust proof and will not come off. The garment is constructed with an in-set belt for appearance and comfort.

POSTMAN BLUE SHOPCOAT\$6.25

LOT 110 (Chest Size)

In addition to a shop coat looking neat and business like, it is a real clothing saver. Pit coats (shopcoats) are made of the same material as the coverall. They are constructed for heavy duty wear. A full belt with a buckle is made into the coat and the buttons are rust proof.

POSTMAN BLUE ARMY TWILL FLIGHT CAP3 FOR \$2.95

LOT 60F (Sizes 6½ to 7¾)

POSTMAN BLUE CAP TOPS2 FOR \$1.50

LOT 60T (Sizes 6½ to 7¾)

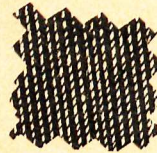
CAP BASE FOR CHAUFFEUR CAP\$1.00

LOT 60B (Sizes 6½ to 7¾)

POSTMAN BLUE OVERSEAS CAP3 FOR \$2.95

LOT 600 (Sizes 6½ to 7¾)

SHIRTS
PANT & JACKET
MATERIAL.



**MONEY BACK
IF NOT PLEASED**

**AT ONCE
DELIVERY**

Jackets,
\$5.95

Pants,
\$4.75



BLUE POPLIN SPORT SHIRT... \$2.25

Lot No. 66P Cotton Poplin Sport Shirt, short sleeves, box tail, to go with Postman blue, navy blue, or gray uniforms. Slightly lighter color than postman blue for good contrast.



AT ONCE DELIVERY..

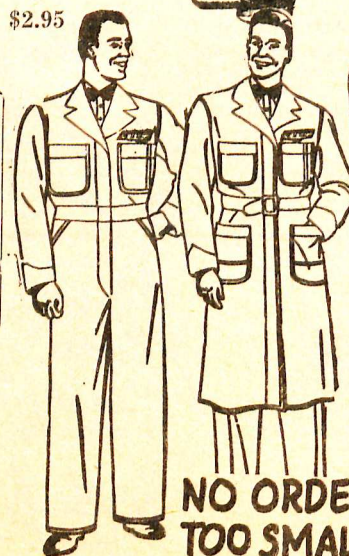
1. SEND NO MONEY... PAY POSTMAN C.O.D.
2. OPEN ACCOUNT TO RATED FIRMS.
3. FREE DELIVERY When Check With Order

INDUSTRIAL UNIFORM CO.

143 S. Rock Island Wichita 2, Kansas

FRONT EMBLEM 25¢

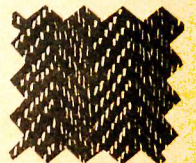
We stock practically all front emblems in the automotive, gasoline, bottling, implement and industrial field. 25¢ attached to our uniforms. Unattached separate emblems, 50¢.



YOUR NAME HERE

8¢ PER LETTER
2 INCH BLOCK
OR SCRIPT

COVERALL
AND
SHOPCOAT
MATERIAL



**NO ORDER
TOO SMALL**



IRON MAN Wash'n' Wear

55% "DACRON"

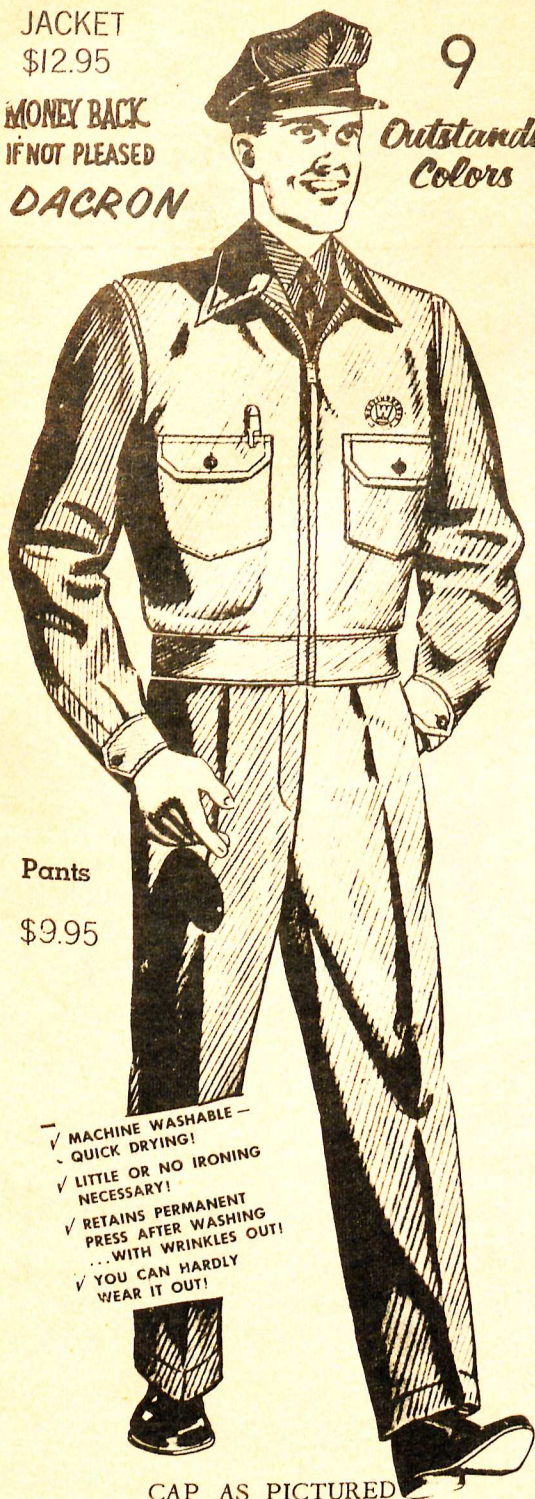
ACID RESISTANT! UNIFORMS

JACKET
\$12.95

MONEY BACK
IF NOT PLEASED
DACRON

9

Outstanding
Colors



Pants

\$9.95

- ✓ MACHINE WASHABLE — QUICK DRYING!
- ✓ LITTLE OR NO IRONING NECESSARY!
- ✓ RETAINS PERMANENT PRESS AFTER WASHING ... WITH WRINKLES OUT!
- ✓ YOU CAN HARDLY WEAR IT OUT!

CAP AS PICTURED
IRON MAN GABERDINE

CAP COMPLETE LOT 900C \$2.75
(BE SURE AND GIVE COLOR)

EXTRA TOPS \$1.50 EACH. LOT 900T

For IRON MAN LEGION STYLE CAPS,
SEE NEXT PAGE. \$1.95

Free SWATCH CARDS

POSTMAN BLUE
(light blue)

NAVY BLUE
(dark blue)

BROWN

MIDNIGHT BLUE
(very dark blue)

EVERGREEN
(bottle green)

CHARCOAL

FORREST GREEN
(olive drab)

TAN

GRAY

1. Out Wears Wool
2. More Beautiful than Wool
3. Fine Texture of Wool
4. Costs Less than Wool
5. Vivid Exciting Colors that Stay
6. Wash and Wear Features
7. Acid Resistant
8. Wrinkle Resistance
9. Extra Comfort and Looks
10. Extra Shape Retention

JACKET LOT 900J (BE SURE AND GIVE COLOR) \$12.95

PANT LOT 900P (BE SURE AND GIVE COLOR) 9.95

Iron Man Gaberdine is the Finest that money can buy . . . It's for the Manager or Owner who needs the Ultimate in Appearance. Compare the Soft, Plyable Texture of Iron Man Gaberdine with the Best Woolen Uniforms . . . You will be pleased with your purchase . . . Remember that Iron Man Gaberdine is Acid Resistant . . . It's Wrinkle Free . . . and needs little or no ironing.

You get the Additional Wearing Qualities of Fortified Dacron. This makes Iron Man Gaberdine Wear Like Iron. The tailoring and construction of Iron Man Uniforms are unsurpassed, even in \$45.00 and \$55.00 Uniforms.

Iron Man Gaberdine is Wash and Wear Material. Laundry at home . . . Scrub soiled areas as required . . . Rinse garment in clear water and place dripping wet on hanger. Garments will dry overnight. May also be laundered or dry cleaned commercially.

Everything has been done to make Iron Man exactly what you want . . . We have not tried to skip here and there to lower the price. The Extra Large Double Nylon Pockets . . . The Large "Let Out" in the Seat . . . The Nylon Waistband . . . The Extra Heavy Zippers in Pants and Jackets . . . The Pleated Front on the Pants . . . The Double Reinforcement at the Elbows of the Jacket and Many Other Features all go to make Iron Man Gaberdine Uniforms the Best Available at ANY Price.

Notice the Price and Compare it with woolen Gaberdine. There is More Wear, More Appearance, More Construction and More Comfort in "Iron Man". Order a Free Swatch Card showing All the Vivid Striking Colors . . . Colors that Will Not fade out.



OPTIONAL ZIP IN LINERS

- A. 24 oz. 100% Reprocessed Wool Melton Sleeveless Lining, \$2.95.
- B. Insulated Dacron Polyester Fibre Fill WASH 'N WEAR Sleeveless Lining, \$4.50.
- C. Insulated Dacron Polyester Fibre Fill WASH 'N WEAR Lining, Long Sleeve, Knit Wristlet, \$6.95.

TEAR OFF HERE
IRON MAN INDUSTRIAL UNIFORM CO.
143 S. Rock Island Wichita 2, Kansas



GENTLEMEN: Without obligation on my part, please send your FREE swatch cards of actual samples of IRON MAN GABERDINE. Showing all colors of Pants, Jackets and Shirts. A new catalogue will be enclosed.

FIRM NAME _____

ADDRESS _____ CITY _____

STATE _____ TO ATTENTION OF _____

PRODUCTS SOLD BY YOUR FIRM _____

WHITE SHIRTS 65% DACRON 35% COTTON

LONG SLEEVE \$3.95

(3 FOR \$10.85)

DRESS SHIRTS

INCOMPARABLE!



QUALITY IN SLEEVE LENGTHS.
A great dress shirt value in 65% DACRON
AND 35% COMBED POPLIN. 2 Way cuffs
. . . (Button or links). 2 Way collar. . .
Sewed in collar stays for neatness.

You will like the modified
spread collar.

WHEN ORDERING BE
SURE AND GIVE
SLEEVE LENGTH.

HERE IS REAL WASH AND WEAR. . .
LITTLE OR NO IRONING. . . The fresh-
ness in a shirt that looks good at the end
of a busy day. . . Then too there is the
extra wear and comfort that DACRON and
COTTON gives.



FREE 
DELIVERY
When Check With Order.
Open Account to Rated Firms
C.O.D. If You Prefer

SHORT SLEEVES 65% DACRON 35% COTTON

The same fine material described in the long sleeve shirt is also put
into the short sleeve model. The same construction and quality features
. . . except it is made in short sleeves.

LOOKS FRESH AT THE END OF A BUSY DAY



\$2.95

3 FOR
\$8.25

TEAR OFF HERE
INDUSTRIAL UNIFORM COMPANY
143 South Rock Island Wichita, Kansas

SHIP TO _____ Date _____

Street and Number _____

City _____ Zone _____ State _____

Indicate if Payment C. O. D. or by Check Amount Enclosed \$ _____

Quantity	Description	NECK AND SLEEVE LENGTH	Price	Total
	LONG SLEEVE STYLE 4400			
	SHORT SLEEVE STYLE 444			
	LETTERING AND EMBLEMS.			

TEAR OFF HERE

LONG SLEEVE
STYLE #22D

FINE WHITE BROAD CLOTH
DRESS SHIRTS

A PRESS-LESS COTTON
WRINKLE RESISTANT
Made in U.S.A.
LITTLE OR NO IRONING REQUIRED

Quality Features

Fine Broadcloth
Mercerized

Guaranteed Fray-proof Collar

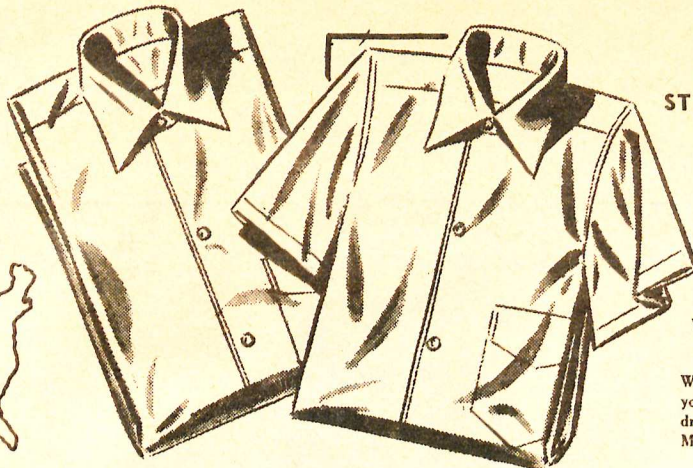
Exceeds Government Quality
Standards

Laboratory Tested & Approved

\$2.95 3 FOR
\$8.50

compares with 4.25-5.00 shirts

One Pocket
Permanent Collar Stays
Sanforized
Form Fit
Sizes 14 - 17
Sleeves 32 - 35



SHORT
SLEEVE
STYLE NO. 26

\$2.25

**MONEY BACK
IF NOT PLEASED**

SPRINGSHRUNK

FABRIC SHRINKAGE LESS THAN 1%
Washfast Colors A.A.T.C.C. Test No. 3 160*

NON-CHLORINE RETENTIVE
Wash by hand or machine with mild soap as
you would any fine cotton. Can be machine
dried or drip dried. Do not wring or twist.
May be laundered commercially.



**FREE
DELIVERY**

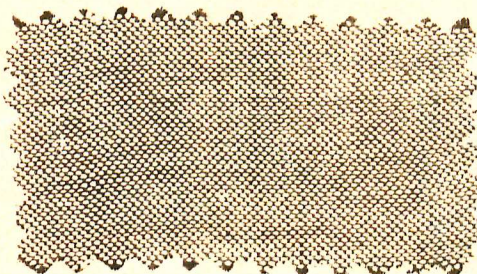
When Check With Order.
Open Account to Rated Firms
C.O.D. If You Prefer

OXFORD CLOTH

- Regulation Modified Spread Collar
- BI-ANGLE COLLAR STAYS
- Regulation Fine COMBED Oxford

ORDER SHIRT ONE OR 5,000 TODAY

**AT ONCE
DELIVERY**



**OXFORD CLOTH
UNIFORM SHIRTS
LONG SLEEVES**

- Flap Pockets
- Pencil Pocket
- Permanent Collar Stays
- Sanforized and Vat Dyed
- Form Fit
- Sizes 14 to 18
- Sleeves 31 to 36

\$4.25



**SHORT SLEEVES
\$3.50**

- Convertible Collar
- Permanent Collar Stays
- Half Sleeves
- Flap Pockets
- Pencil Pocket
- Sanforized and Vat Dyed
- Form Fit
- Sizes

S M L XL
14-14½ 15-15½ 16-16½ 17-17½

**BLUE NO. 428
TAN NO. 1003
GRAY NO. 4003**

LONG SLEEVE OXFORD CLOTH FINE SHIRTS

BLUE OXFORD CLOTH, LONG SLEEVES, LOT 582 \$4.25
TAN OXFORD CLOTH, LONG SLEEVES, LOT 1002 \$4.25
GRAY OXFORD CLOTH, LONG SLEEVES, LOT 4003 \$4.25
(With button down collar)
WHITE OXFORD CLOTH, LONG SLEEVES, LOT 1237
(Button down collar, extra wide pockets, no flaps.) \$4.25



**FREE
DELIVERY**

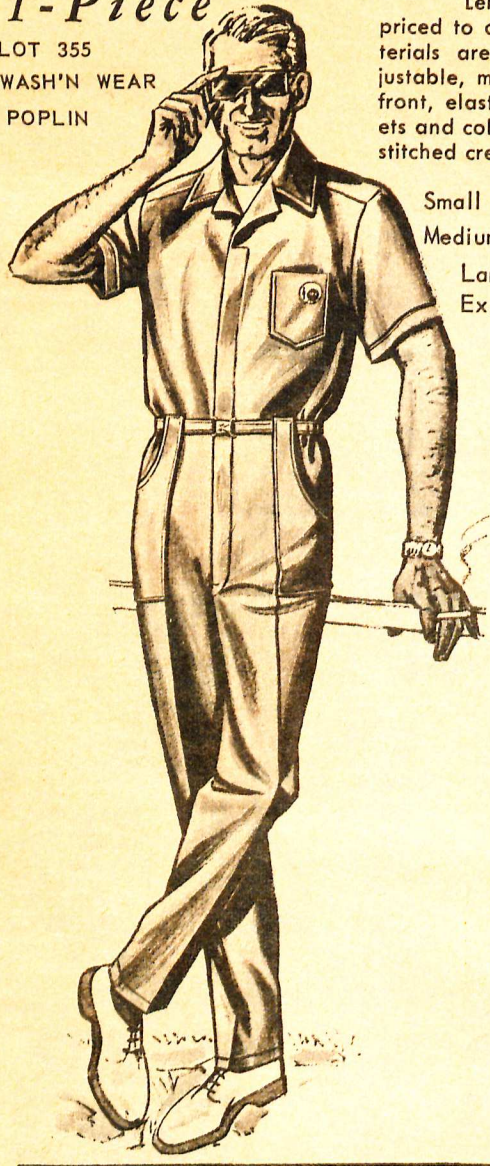
When Check With Order.
Open Account to Rated Firms
C.O.D. If You Prefer

**MONEY BACK
IF NOT PLEASED**

INDUSTRIAL UNIFORM CO.
143 S. Rock Island Wichita 2, Kansas

1-Piece

LOT 355
WASH'N WEAR
POPLIN



Leisur-Alls are styled, tailored and priced to out-sell them all! Finest quality materials are styled with full, detachable, adjustable, metal-buckle belt, full 2-way zipper front, elastic-back waistband, 3 roomy pockets and colorful embroidered motif. Permanent stitched crease on leg fronts.

Small (34-36)
Medium (38-40) SAGE GREEN.
Large (42-44)
Ex. Large (46-48) **\$6 95**



Lot 286
Lot 288

\$10.95 Lot 286 — Sanforized 9-ounce Sateen with Dow-Corning's Silicone water repellent finish. Two front zipper pockets, 2 hip pockets, 1 zippered to prevent loss of valuables, bi-swing back, 2-way zipper closure with concealed snap fastener at top, adjustable snap fastener on bottom of leg cuffs. Smartly styled. Expertly tailored with stitched-down belt; elastic inserts at waist for neat fit. A real seller to sportsmen. Color: Burnt Tobacco Brown. Sizes: Shorts, 36-46; Regulars, 34-50; Longs, 36-48.

\$10.95 Lot 288 — Same as Lot 286 except in Hunters Red.

----- TEAR OFF HERE -----

Without obligation on my part please send swatches of IRON MAN SLACKS and also LEISURE-ALLS.

FIRM NAME _____
ADDRESS _____ CITY _____
STATE _____ TO ATTENTION OF _____

ANOTHER CATALOGUE WILL BE ENCLOSED

**INDUSTRIAL
UNIFORM CO.**
143 SO. ROCK ISLAND
WICHITA, KANSAS

IRON MAN DRESS SLACKS WASH AND WEAR

YOU ASKED FOR IT...IRON MAN DACRON MATERIAL BUILT INTO A TOP DRESS SLACK ... THIS YEAR AROUND DRESS SLACK MATERIAL IS SLIGHTLY LIGHTER WEIGHT THAN IRON MAN GABERDINE...BUT THE COLORS AND TEXTURE ARE THE SAME.

Postman blue -----Lot 832
Forest green ----- Lot 833
Desert tan -----Lot 830
Navy blue -----Lot 839
Brown -----Lot 837
Evergreen ----- Lot 835
Grey -----Lot 836
Charcoal -----Lot 831

\$8.95

**MONEY BACK
IF NOT PLEASED**



**Out Wears Wool
More Beautiful than Wool
Fine Texture of Wool
Costs Less than Wool
Vivid Exciting Colors that Stay**

**Wash and Wear Features
Acid Resistant
Wrinkle Resistance
Extra Comfort and Looks
Extra Shape Retention**

P.S. try dipping this fabric in battery acid and let it dry. You'll be amazed to see that it is unaffected because "Dacron" resists battery acid.

CAUTION: Protect your hands and eyes against harmful battery acids by wearing goggles and rubber gloves.

1. SEND NO MONEY . . . PAY POSTMAN C.O.D
2. OPEN ACCOUNT TO RATED FIRMS.
3. **FREE DELIVERY** When Check With Order

We stock practically all front emblems in the automotives, gasoline, bottling, implement and industrial field. We attach these to our garments at cost (25c) as a service to our uniform customers.

All 1 1/2" x 3 1/2" Shop Emblems are stocked in the following combinations:
White-Twill Red-Letters Blue-Border



No. 2221



No. 2217



No. 2227



No. 2232



No. 2211



No. 2213



No. 2224



No. 2228



No. 2222



No. 2220



No. 2225



No. 2219



No. 2223



No. 2235



No. 2230



No. 2226



No. 2218



No. 2234



No. 2215 A



No. 2216



No. 2215



No. 2214



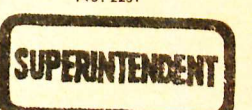
No. 2233



No. 2231

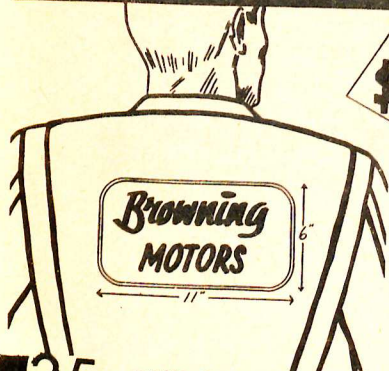


No. 2229



No. 2236

YOUR Own BACK EMBLEM!



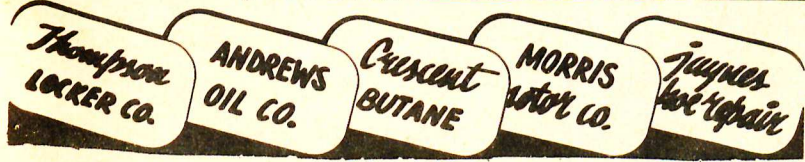
\$1.25 ORDER 1 OR 500 *today*

IF THE EMPLOYEE LEAVES, Take it off!

Gone are the days of uniforms being ruined by employees switching jobs and firm name changes. BACK PLAQUE emblems are sewed on or taken off as needed.

Order one or two, or any amount that you need, as you need them. No minimum. PREPAID when check with order.

\$1.25 ANY COLOR LETTERING BACK COMPLETE BACKGROUNDS OF RED, NAVY BLUE, KELLY GREEN



TEAR OFF HERE

INDUSTRIAL UNIFORM CO.

143 S. Rock Island Wichita 2, Kansas

OPEN ACCOUNT TO RATED FIRMS. FREE DELIVERY When Check With Order

SHIP TO _____ Date _____
 Street and Number _____
 City _____ Zone _____ State _____
 Amount Enclosed \$ _____

Your choice of lettering thread. When choice is not made, we will use contrasting color.
 Color _____
 Your choice of background:
 White with royal blue border ()
 White with red border ()
 Red with white border ()
 Red with gold border ()
 Navy Blue with red border ()

1st Line _____ 10 Letters
 2nd Line _____ Block or Script

Kelly Green with gold border ()

Enclosed is a uniform order. Please attach BACK PLAQUE emblems on garments at \$1.25 Each. Number of BACK PLAQUE EMBLEMS _____

Please send me _____ BACK PLAQUE emblems at \$1.75 each to go on our present uniforms. Signed _____

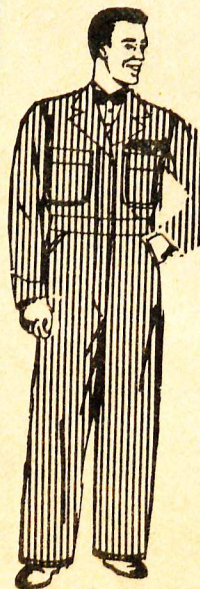
TEAR OFF HERE

STANDARD OIL

- BLUE AND WHITE UNIFORM PANT
Lot 745P \$4.30
- NEW LIGHT BLUE LONG SLEEVE SHIRT
Lot 745S \$3.10
- NEW LIGHT BLUE SHORT SLEEVE SHIRT
Lot 745SS. . . . \$3.10
- WHITE ARMY TWILL UNIFORM SHIRT
Lot 22A \$3.50
- WHITE POPLIN SHORT SLEEVE SPORT
SHIRT - Lot 26 . . . \$2.25
- LINED BATTLE JACKET TO MATCH PANT
Lot 745JL \$6.95
- COVERALL TO MATCH PANT.
Lot 745C. \$7.75



ORDER Today



FREE DELIVERY!
When Check With Order.
Open Account to Rated Firms
C.O.D. If You Prefer



Legion Style UNIFORM CAP



LOT 99
\$1.40

COTTON

- Washable—Quick Dry • Texon Visor
- Self Lined Sweat Band
- Synthetic Mesh Lining for
Shape Retention
- 4 Eyelets for Better Ventilation
- Steam Blocked and Sized for Proper Fit
- Sizes 6 3/4 to 7 1/2

(BE SURE AND GIVE COLOR)

- POSTMAN BLUE
- EVERGREEN (BOTTLE GREEN)
- TAN
- FOREST GREEN (O.D. TEXACO)
- GRAY
- NAVY BLUE

PREPAID

When Check With Order
Open Account to Rated Firms
C.O.D. If You Prefer

**MONEY BACK
IF NOT PLEASED**

INDUSTRIAL UNIFORM CO.

143 S. Rock Island
Wichita, Kansas

- NAVY BLUE ARMY TWILL FLIGHT CAPS
Lot 90F (sizes 6 1/2 to 7 3/4) 3 for 2.95
- NAVY BLUE OVERSEAS CAP
Lot 900 (sizes 6 1/2 to 7 3/4) 3 for 2.95
- NAVY BLUE ARMY TWILL CAPTOP
Lot 90T (Sizes 6 1/2 to 7 3/4) 2 for 1.50
- CAPBASE FOR CHAUFFEUR CAP
Lot 90B (sizes 6 1/2 to 7 3/4) 1.00

WELDERS - FIRE FIGHTERS

SPECIALLY TREATED COTTON

INDUSTRIAL UNIFORM CO.

143 S. Rock Island Wichita 2, Kansas

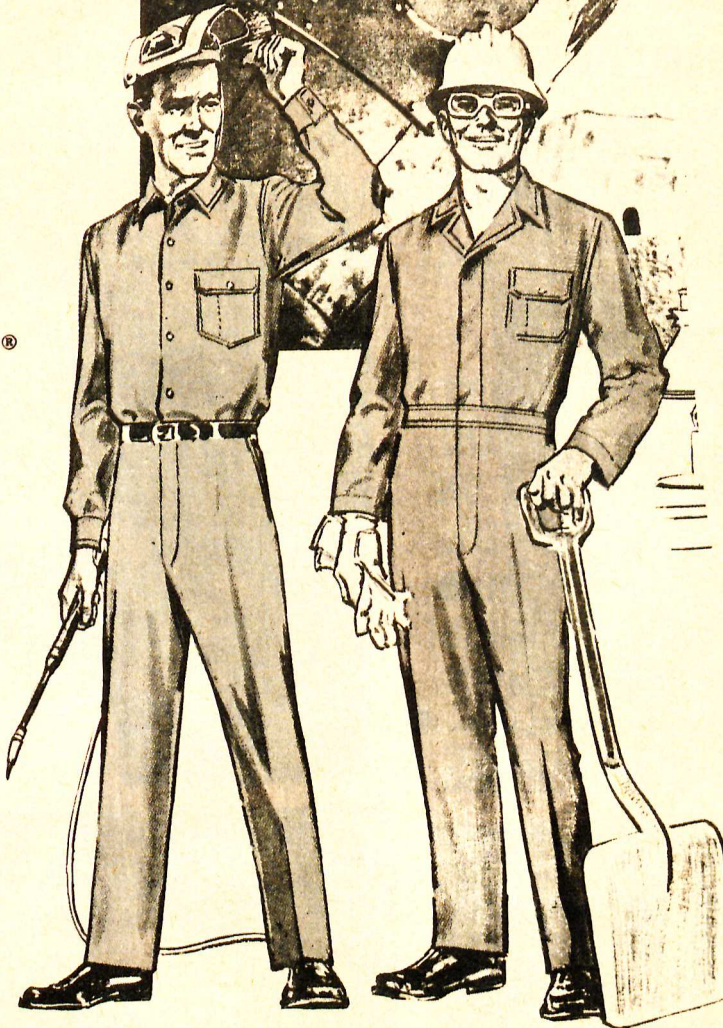
Now for the first time, maximum protection from the hazards of flame, molten metal or sparks. The danger of igniting a worker's clothing is completely eliminated by a special treatment of 100% cotton, before tailoring, to assure these important and exclusive benefits:



FLAME-PRUF® CLOTHING

- Will not support combustion or afterglow.
- Will withstand repeated commercial laundering and dry cleaning.
- Is non-toxic, non-allergic and non-irritating.
- Is odorless and mildew resistant.
- Has high air porosity plus high tensile strength.
- Has controlled residual shrinkage.
- Is color fast and static-free.
- Will not melt or drip at high temperatures.

FLAME-PRUF CLOTHING MEETS ALL GOVERNMENT SPECIFICATIONS FOR DURABLE FIRE RETARDANT CLOTHING.



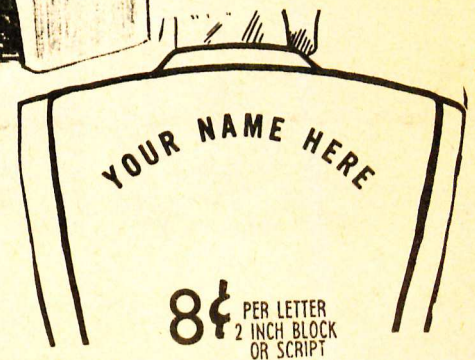
**FLAME-PRUF
MATCHING SHIRT AND PANTS**
SHIRT: Full cut for action-free fit, reinforced seams, convertible collar, large breast pocket with stainless steel gripper on flap. Stainless steel gripper front. Sizes S, M, L, XL.
STYLE #FP925-GREY \$5.95

PANTS: Fully cut for freedom of action. Seams and strain points reinforced. Two deep inserted side pockets. Right hip pocket with stainless steel gripper on flap. Stainless steel grippers on fly. Sizes 28 to 48.
STYLE #FP901-GREY \$8.95

FLAME-PRUF COVERALLS

Rugged tailoring for comfort plus heavy duty. Full cut for freedom of movement. Two deep side pockets. Breast pocket and hip pocket have stainless steel grippers on flaps. Stainless steel gripper front. Sizes S, M, L, XL.
STYLE #FP999-GREY \$18.95

**MONEY BACK
IF NOT PLEASED**



HEAVY DUTY INDUSTRIAL TOWELS 1 1/4¢

ARE **ABSORBENT** WIPE UP GREASE, OIL AND GRIME, QUICKLY AND EASILY **RE-USABLE** USE EACH TOWEL OVER AND OVER THEY REALLY LAST **STRONG** THEY HAVE BODY THEY'RE TOUGHER THAN OTHER DISPOSABLE TOWELS **DISPOSABLE** WHEN THEY GET DIRTY, THROW THEM AWAY

Kimtowels

PRICED TO BE DISPOSABLE ■ USE THEM OVER AND OVER ■ EXCELLENT SAFETY FEATURES ■ TOUGH ON DIRT, GREASE AND GRIME ■ FEEL, LOOK AND PERFORM LIKE CLOTH ■ USE WET OR DRY, WITH OR WITHOUT SOLVENTS ■ THEY'RE DISPOSABLE. NO OILY RAG STORAGE PROBLEMS ■ NO RENTAL COSTS, NO PILFERAGE



- ★ FOR REFINERIES
- ★ MECHANIC SHOPS
- ★ GARAGES
- ★ FILLING STATIONS
- ★ DAIRIES
- ★ 100'S OF USES

**MONEY BACK
IF NOT PLEASED**



LARGE
SIZE
13" x 15"

■ STRONG, BULKY, FULL-BODIED ■ WHEN THEY GET DIRTY — JUST THROW THEM AWAY ■ HUNDREDS OF PRACTICAL APPLICATIONS

TIRED OF RENTING SHOP TOWELS ?

Expensive losses. Fire hazard and health problem by storing soiled cloths.

Difficult to store, count and dispense. Collection, counting and bookkeeping charges.

Contamination with metal chips, caustic and moisture.

Not acceptable as a personal wiper.

Uncertain weekly deliveries.



HIGH COST OF RENTING!!

Don't overlook the definite cost of using rental towels. . . Your employees time to check towels in and out to a delivery man. . . The cost of saving the towels. . . Add to that the cost of lost towels. . . and the Laundry Bill. . . In most cases you can figure that usage of rental towels costs you over 3 times as much as your actual towel bill.

HEAVY DUTY

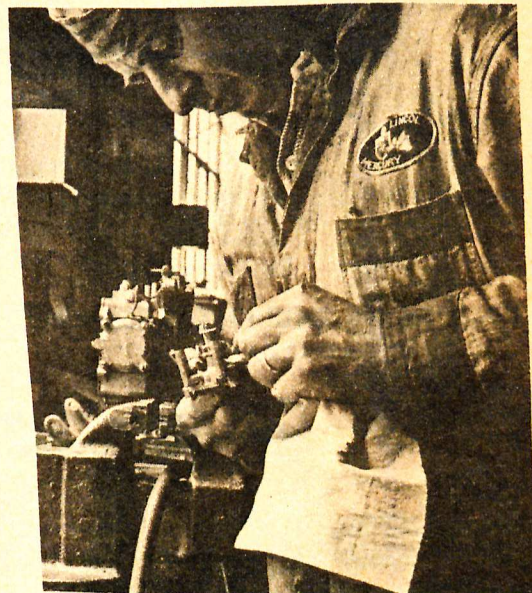


**FREE FROM ABRASIVE
OR FOREIGN MATERIAL**

TOWEL

FOR GREASE AND OIL

***SUPER-ABSORBENT ECONOMICAL
SOLVENT RESISTANT SUPER-SOFT***



INDUSTRIAL UNIFORM CO. 143 S. ROCK ISLAND ST
WICHITA, KANSAS

AT ONCE DELIVERY

SHIP TO _____ Date _____

Street and Number _____

City _____ Zone _____ State _____

Payment C.O.D. or by Check Amount Enclosed \$ _____



MONEY BACK -- IF NOT PLEASED	SIZE	PRICE	HOW MANY	TOTAL
150 INDUSTRIAL KIMTOWELS IN PACKS OF 50 (SAMPLE ORDER)	13" x 15"	\$ 2.95		
400 INDUSTRIAL KIMTOWELS IN PACKS OF 50	13" x 15"	\$ 6.30		
1200 INDUSTRIAL KIMTOWELS IN PACKS OF 50 (1¼¢ EACH)	13" x 15"	\$ 15.00		
6000 INDUSTRIAL KIMTOWELS IN PACKS OF 50	13" x 15"	\$ 65.50		

SALES TAX
TOTAL

ADVERTISING T SHIRTS

Only the finest quality long fibre combed yarn is used in the manufacture of our T-shirts. The collars are nylon reinforced, giving extra elasticity.



White T Shirts are the least expensive and most effective advertising you can find. Besides it makes a garment of maximum utility. Your ad can be printed on the back or front, as you desire. If no preference is stated, we will print on the front.

These prices include your ad in one color. State color desired. If none stated, we will use Red.



MEN'S SIZES
 Small (34-36)
 Medium (38-40)
 Large (42-44)

MIXED SIZES MAY BE ORDERED TO MAKE QUANTITY REQUIRED

These make excellent Good Will Builders when sold or distributed among the boys in your locality. Sizes of Boys' Garment — 10-12-14-16. Price of Boys' T-Shirts is \$1.00 less per dozen than the men's. Boys' T-Shirts can be included with orders for men's garments.

MENS - BOYS

T SHIRTS

WITH YOUR NAME IMPRINTED

YOUR CHOICE OF SIZES

\$19.95 for 1 Dozen
 \$16.50 per Dozen (for 2 or 3 Dozen)
 \$13.50 Per Dozen (for 4 to 6 Dozen)
 \$12.50 Per Dozen (for 7 Dozen)
 Boys Sizes . . . \$1.00 less per Dozen.

WHITE T SHIRTS WITHOUT PRINTING

YOUR CHOICE OF SIZES

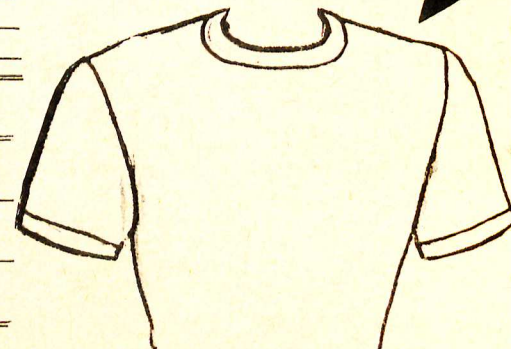
3 for \$2.95

YOUR COMPANY EMBLEM SCREEN PROCESS PRINTED ON WHITE T SHIRTS AS PICTURED AT RIGHT IN ONE COLOR..



SHIP TO _____ Date _____
 Street and Number _____
 City _____ Zone _____ State _____
 Indicate if Payment C. O. D. or by Check Amount Enclosed \$ _____

LETTERING COPY
 SILK SCREENED T-SHIRTS



Money Back
 if not pleased

Quantity	Description	(Chest Size)	Price	Total

1. SEND NO MONEY . . . PAY POSTMAN C.O.D.
 2. OPEN ACCOUNT TO RATED FIRMS.
 3. FREE DELIVERY When Check With Order
- INDUSTRIAL UNIFORM CO.**
 143 S. Rock Island Wichita 2, Kansas

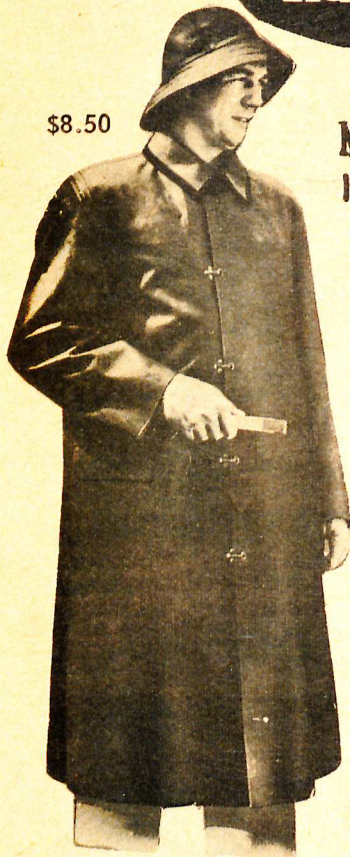
Kansas Orders Only →	Kansas Sales Tax
TOTAL	



Rainfair

HEAVY DUTY SUITS

\$8.50



**MONEY BACK
IF NOT PLEASED**

Jacket has lap front with four snaps; corduroy tipped collar; all seams are cemented and vulcanized.

Overalls have large protective bib; adjustable suspenders of double thick self-material.

LENGTH: *Jacket, 30 inches long; Overalls, 29 inch inseam.*

SIZES: S-M-L-XL

WEIGHT: *Jacket, 1 lb. 12 oz.; Overalls, 1 lb. 12 oz.*

Yellow Jacket	82161-JY	\$5.50
Yellow Overalls	82161-OY	\$5.50
Black Jacket	82161-JB	\$5.50
Black Overalls	82161-OB	\$5.50

\$5.50



\$5.50

AT ONCE DELIVERY..

COAT

All seams are cemented and vulcanized. Double ventilated back; underarm vents; corduroy tipped collar; patch pockets with flaps. Riveted back vent. Five snap fasteners on front.

LENGTH: 49 inches

SIZES: *Even sizes, 36-46 (Special sizes 48-54 at nominal extra cost)*

WEIGHT: 2 lbs. 14 oz.

Black Coat	82161-CB	\$8.50
Yellow Coat	82161-CY	\$8.50

INDUSTRIAL UNIFORM CO.

143 SO. ROCK ISLAND
WICHITA, KANSAS

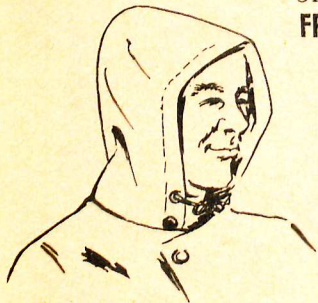
SEND NO MONEY . . . PAY POSTMAN C.O.D
OPEN ACCOUNT TO RATED FIRMS.

FREE DELIVERY When Check With Order

LETTERING

(Stenciling)

1 line	40¢
2 lines	65¢
3 lines	95¢



NEOPRENE DETACHABLE HOOD

Parka type detachable hood fits all size garments. Covers any head snugly by adjustable draw strings. Adaptable to any Rainfair jacket or coat. We add three fasteners to collar of jacket where hood can be attached.

Black Neoprene Hood	H-1162	\$2.25
Yellow Neoprene Hood	H-1172	\$2.25



SOU'WESTER

Made from sturdy rubberized coating on white sheeting. Overlapped and sewed construction. Sweat band. Reinforced brim with stitching. Extra long in back.

QUARTER SIZES: 6¾ TO 7¾

Black Sou'wester	H-1206	(Sewed) \$ 1.95
Yellow Sou'wester	H-1197	(Sewed) \$ 1.95

TYPHOON SUIT

Neoprene coated olive dyed sheeting. Consists of hooded parka and pants, both with draw string at waist. Hood covers snugly and tightens with draw string. Waterproof slide fastener and gusset at chest opening provide full protection from rain, wind and cold. Comfortable raglan shoulders and fully cut for wearing over heavy clothing. Widely used by outdoor sportsmen and workers.

LENGTH: *Jacket, 30 inches;
Pants, 31 inches*

SIZES: S-M-L-XL

WEIGHT: *Jacket, 2 lbs.;
Pants, 1 lb.*

Olive Typhoon Jacket	J-1260	\$11.95	—	Olive Typhoon Pants	O-1261	\$7.95
----------------------	--------	---------	---	---------------------	--------	--------

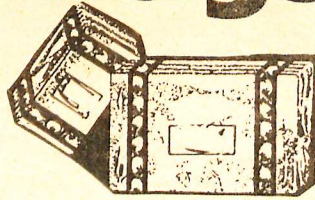


Grease Rags

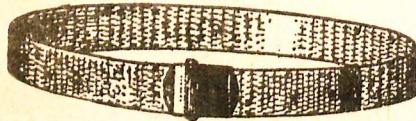
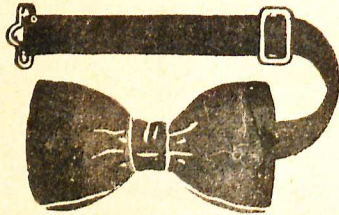
A Soft Durable Cotton Towel, Hemmed and ready for many months of service as a general clean up rag in kitchen. Also used in filling stations, garages. Perfect for dish rags and general utility.

2500 Rags \$195.00

PACKAGE OF 25 18"x18" GREASE RAGS	2.75
PACK OF 100 18"x18" GREASE RAGS	10.00
PACK OF 300 18"x18" GREASE RAGS	28.00



**REGULAR
18" x 18"**



**MONEY BACK
IF NOT PLEASED**

HEAVY REGULATION WEB BELT
SOLID BRASS BUCKLE. WHITE,
TAN, GRAY, NAVY BLUE,
SIZES 28 to 48 \$1.00



**HEAVY DUTY
RUBBER APRON
\$3.25**

\$36.00 Doz.

No. BR 2

SIMPLY SCRUB WITH SOAP AND WATER,
OR MILD DETERGENT AND RINSE OFF.

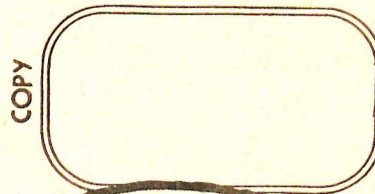
- Resist heat up to 160 degrees
- Stays soft and pliable in sub-zero temperature
- It is oil and water proof
- Battery acid proof and resists all but the strongest acids
- Guaranteed not to scuff
- Practically tear proof

Order 1 or more Script front emblems

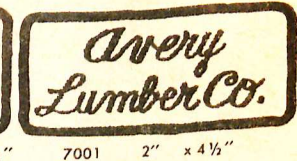
For firms desiring a few front emblems, but without a need for a loom, (150), we recommend SCRIPT EMBLEMS. They are available on our uniforms in quantities from 1 up. Lettering is all in SCRIPT as pictured below. Emblem lot number denotes size and shape. Use space provided for your "COPY". Your choice of any color background, border, and lettering.

GENTLEMEN: Please make up the following SCRIPT emblems and attach them to the uniforms ordered. Price: 75¢ each.

Quantity _____ Lot No. _____ Size _____ Background color _____
 Border Color _____ Lettering Color _____ SCRIPT emblem order \$ _____
 Firm Name _____
 Address _____ City _____
 State _____ Attention of _____



**INDUSTRIAL
UNIFORM CO.**
143 SO. ROCK ISLAND
WICHITA, KANSAS



----- TEAR OFF HERE -----

SHIP TO _____ Date _____
 Street and Number _____
 City _____ Zone _____ State _____
 Indicate if Payment C. O. D. or by Check Amount Enclosed \$ _____

Item	FREE DELIVERY	When Check With Order	Price	Quantity	Total
BLACK RUBBER APRONS			3.25		
PACKAGE OF 25 18"x18" GREASE RAGS			2.75		
PACK OF 100 18"x18" GREASE RAGS			10.00		
PACK OF 300 18"x18" GREASE RAGS			28.00		
BLACK 4-IN-HAND UNIFORM TIES			1.00		
BLACK (Clip On) BOW TIES (Cloth)			.59		
LEATHERETTE BOW TIES ON ELASTIC			.39		
CLOTH BOW TIES ON ELASTIC			.49		

1. SEND NO MONEY . . . PAY POSTMAN C.O.D.
2. OPEN ACCOUNT TO RATED FIRMS.
3. FREE DELIVERY When Check With Order

Kansas
Orders
Only →

Sales
Tax

TOTAL

NAVY'S 3-dimension
Arctic Fabric
Brings New Warmth
To Underwear

FOR THE MAN ON THE C-O-L-D JOB.

THERMAL UNDERWEAR

INDUSTRIAL UNIFORM CO.

143 S. Rock Island Wichita 2, Kansas

NAVY'S NEW ARCTIC FABRIC



FREE DELIVERY
 When Check With Order.
 Open Account to Rated Firms
 C.O.D. If You Prefer

100% COTTON Thermal Underwear is made from a special knit fabric developed by the Navy for extra warmth in the sub-zero arctic climate. 3-dimension waffle-knit fabric holds body heat . . . no need for bulky, extra clothing. Extra high absorbency assures comfort in mild weather or indoors. Soft cotton will not scratch. Heat resistant "Life-of-the-garment" elastic waistband. Extra full cut throughout for no-bind comfort, lasting fit, longer wear.

HEAVY WEIGHT

\$5.25 PER SET 3 SETS FOR \$14.95

(Can be ordered separate pants or shirts, \$2.65 each).
 Give shirt and pant size when ordering.
 Shirts Lot 8M76 Pants Lot No. 8M77

STANDARD WEIGHT

\$3.60 PER SET 3 SETS FOR \$10.50

(Can be ordered separate pants or shirts, \$1.85 each).
 Give shirt and pant size when ordering.
 Shirts Lot No. 8M74 Pants Lot No. 8M75

MONEY BACK
IF NOT PLEASED

AT ONCE DELIVERY

EXTRA WARMTH WITHOUT BULK

- 2-THREAD "NEVER SAG" COLLARETTE
- 2-THREAD ELASTIC KNIT CUFFS • SHRINK-RESISTANT FABRIC



SHOP APRON DENIM APRON

98¢

\$10.59 DOZ. 36x29

FEATURES:

- 2.20 weight blue denim, mill finish
- Pad & pencil pocket
- One pocket at waist



SHORTY

KNEE LENGTH HANDLER'S APRON

DOUBLE-FRONT WITH
HARNES SNAPS AND
RINGS ON LEG STRAPS
HEAVY 11 oz. DUCK

A rugged, tough all-purpose split leg. Popular with truckers and handlers that like a shorter apron. Partitioned waist pocket, double front. One leg strap on each side. Pad and pencil pocket on bib.

36 inches long.

No. D-965 Dark Brown

\$3.25 Each
\$9.25 for 3
\$36.10 Dozen



SINGLE-FRONT SPLIT - LEG

With Chrome Harness snaps and Rings on Leg Straps
Heavy 11 oz.

Mode Dark Brown Duck

A fine value as a starting number. Can be priced to meet all competition using harness snaps and rings in construction.

Features: **\$3.25** \$9.25 for 3
\$36.10 per Dozen

- Exclusive non-gap interlocking crotch construction.
- 40" long for full front coverage.
- Criss-cross woven-to-bib over shoulder straps.
- Large center partitioned waist pocket.
- Double stitched and bar tacked.
- Strong chrome harness snaps and rings on leg straps.

No. M-71 Dark Brown



**MONEY BACK
IF NOT PLEASED**



Shoulder straps riveted in back center for easy on and off.



INDUSTRIAL UNIFORM CO. 143 S. ROCK ISLAND ST
WICHITA, KANSAS

HEAVY DUTY

\$3.25
RUBBER APRON

No. BR2
\$3.25 Each
\$9.25 for 3
\$36.25 per Dozen
44 X 36

SIMPLY SCRUB WITH SOAP AND WATER,
OR MILD DETERGENT AND RINSE OFF.

- Resist heat up to 160 degrees
- Stays soft and pliable in sub-zero temperature
- It is oil and water proof
- Battery acid proof and resists all but the strongest acids
- Guaranteed not to scuff
- Practically tear proof

LADIES FORM FITTING WORK APRON

1 Apron \$1.95
6 Aprons \$9.75
12 Aprons 18.50

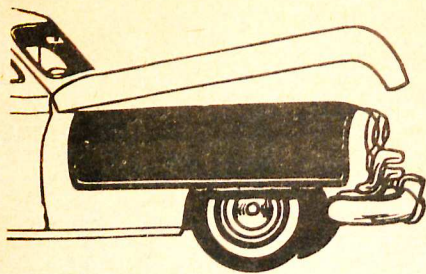
For Factory —
Store — Clerk —
Bakery — Florist
Shop — Office —
Home — Garden
Cool, Comfortable
and Good Looking

No. L72 blue denim



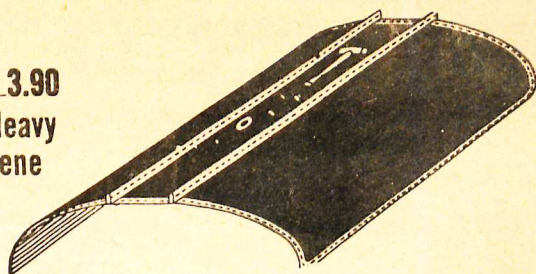
A glamorized form fitting apron with fitted bust, over shoulder strap slanted pockets, and semi-flared skirt. Above the knee length.

Made in new heavy, Sanforized long-wearing materials.



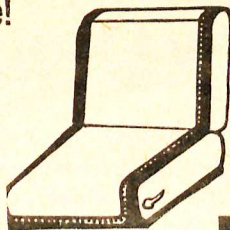
SEAT COVER

No. 104-27 (27" x 56") 3.90
 A "Combination" of Genuine Heavy Gauge Textileleather with Neoprene Backing and Sponge Rubber "Insert" to Hold Cover in Place!



STANDARD FENDER COVER

No. 103SS 26" x 42" 5.90



TOOL-HOLDING FENDER COVER

No. 103SST 26" x 42" 5.90

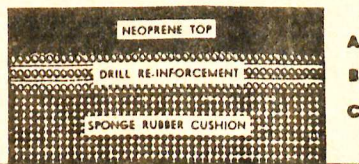
GENERAL SPECIFICATIONS:

The Component Layers of Vacuum - Non - Slip Shop Covers are PERMANENTLY VULCANIZED UNDER HEAT and HIGH PRESSURE! NOTHING TO COME APART! EACH LAYER DESIGNED Specifically for Automotive Applications! Tool Holding Covers Have 1/2 High Parallel Ridges, which Hold Tools, and Small Parts. A Great Time Saver In Carburetion and Ignition Work.

NEOPRENE WORK TOP Forms the "Workside" which is ALWAYS UP! Easily cleaned in "Seconds" with a cloth slightly dampened with gas. DEFIES the Harsh Action of Battery Acid, Gasoline, Grease, tc.

HEAVY DRILL REINFORCEMENT Forms the skeleton of the Cover, Resists Tearing from Snagging!

(ENLARGED CROSS-SECTION)



A
B
C

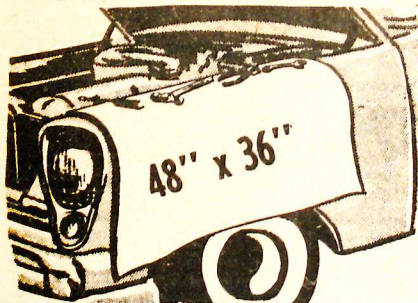
ORDER Today

FULL NEOPRENE - NYLON STITCHED BINDING

Vacuum Non-Slip Covers Are Heavily Stitched with Acid Resistant Nylon Thread. Binding Neoprene-Coated INSIDE and OUT, preventing attack by Battery Acid on Underside!

NON - SLIP SPONGE BACK — Heavy Cushion; Cling: Tightly To Any Surface! Stays Put! No annoying crumpling beneath mechanic's body! A High Quality Automotive Sponge, NOT a Cheap. Sulphur-Blown Imitation!

Cloth Fender Throws



HEAVY DUTY

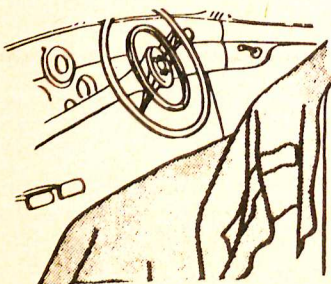
BROWN

1.98

GRAY

\$1.00 Each
\$9.00 Dozen

Cloth Seat Protectors



HEAVY DUTY

BROWN

4.95

GRAY

\$2.25 Each
\$13.00 For 6
\$24.00 Dozen

60" x 72"

----- TEAR OFF HERE -----

INDUSTRIAL UNIFORM COMPANY

143 South Rock Island

Wichita, Kansas

SHIP TO _____ Date _____

Street and Number _____

City _____ Zone _____ State _____

Indicate if Payment C. O. D. or by Check Amount Enclosed \$ _____

Quantity		Size	Price	Total
HEAVY	Cloth Fender Throws	48" x 36"	\$1.98	
HEAVY	Cloth Seat Protectors	60" x 72"	\$4.95	

MONEY BACK IF NOT PLEASED



Sales Tax	
TOTAL	



12W WOMEN'S SHORT SLEEVE COVERALL
Sewed on Waistband \$5.50

8 oz. bleached white sanf. twill. Comfortable and practical. Standard sizes 8 to 20. Oversize, 10% extra.

11W POSTMAN BLUE

\$5.95



114 - BELTED COVERALL

8 oz. bleached white sanf. twill with long sleeve. Beautifully styled and excellently tailored. Inseam 28". Standard sizes 8 to 20. Size 40 and up 10% extra. white only

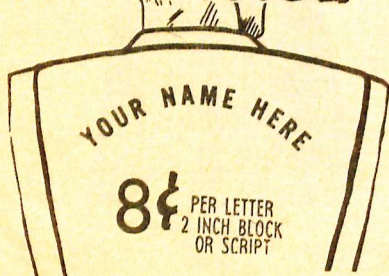
\$7.50



113 - WOMEN'S BLOUSE SHORT SLEEVE

2.85 bleached white sanf. jean styled for looks and tailored for wear. Sizes 8 to 20. Sizes 40 and up 10% extra. white only \$2.50

UNIFORMS THAT ADVERTISE



FRONT EMBLEM 25¢
We stock practically all front emblems in the automotive, gasoline, bottling, implement and industrial field. 25¢ attached to our uniforms. Unattached separate emblems, 50¢.

For your own product or trade mark emblems, write for prices and quantities.

LADIES' OFFICE COATS

\$4.50 TAN

241—Ladies' Sales Smock for retail floor and office wear. Feminine and practical, gives positive protection to street clothes. Trim 6-gore princess style, to wear with or without its sash. Sleeves especially designed to fit comfortably over streetwear. Gathered into band cuff. Large roomy panel pockets. 5-button closing with sturdy stitched edges and sewn buttons. Full two-inch hem. Made of Indian Head cloth, vat dyed Tan. Sanforized for less than 1% shrinkage.

SIZES 30 TO 46



INDUSTRIAL UNIFORM CO.

143 SO. ROCK ISLAND WICHITA, KANSAS



8¢ PER LETTER 2 INCH BLOCK OR SCRIPT

MONEY BACK IF NOT PLEASD

OFFICE COATS

\$4.25

No. 612 — Sanforized Tan Indian Head

No. 613 — Sanforized Gray Indian Head.

No. 614 — Sanforized Jade Green Indian Head.

No. 615 — Sanforized Cadet Blue Indian Head.

No. 312—8-oz. D.F. SANFORIZED white duck. Three sewed on buttons.



Give chest sizes 34 to 46



23W - WOMEN'S JACKET \$5.95

8 oz. bleached white sanf. twill. Styled for work or play. Standard sizes 8 to 20. Oversize 20, 10% extra.

white only





AT ONCE DELIVERY

Name plaques on uniforms promote easy identification and casual friendship. They are easily attached or detached. Name plaques are bordered in white on fine white background material. The first name is embroidered in any color thread in script letters.

Please PRINT First name
in space below.

The entire plaque is washable. Plaques may be pinned or sewed on uniforms without damaging the goods. Actual size 1 1/4 by 3.

15c with our uniforms

35c separately

Color thread desired

----- TEAR OFF HERE -----

TEA TOWELS

31" x 36" MUSLIN

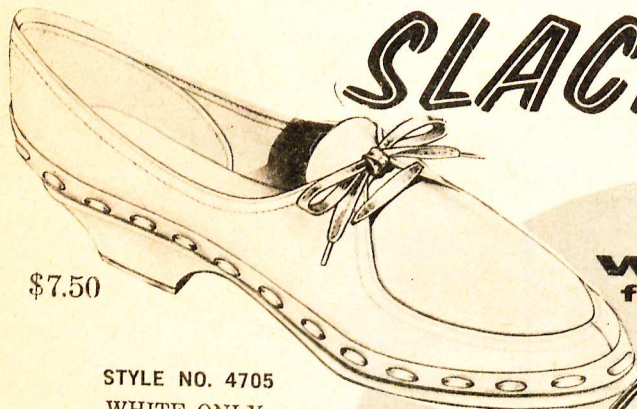
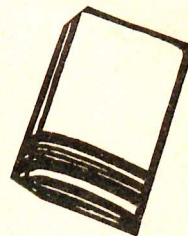
\$3.50 PER DOZ

STOCK NO. 421

CAFE TOWELS
HERRINGBONE CRASH
16" x 30" - RED BORDERS

\$2.95 DOZ.

STOCK NO. 10



\$7.50

STYLE NO. 4705

WHITE ONLY

SIZES:

5 1/2 to 10 Narrow
4 to 10 Medium
5 to 10 Wide

PREPAID

When Check With Order
Open Account to Rated Firms
C.O.D. If You Prefer

**MONEY BACK
IF NOT PLEASED**



**YEAR 'ROUND
PROFESSIONALS**



WHITE ONLY

STYLE No. 4706

SIZES:

5 1/2 to 10 Narrow
4 to 10 Medium
5 to 10 Wide

\$7.50

*the shoe that's as
comfortable as a slipper*

Once a woman has enjoyed the comfort of this remarkable shoe she invariably keeps on re-ordering it. It is the only shoe that provides the bouyant Foamtread comfort, a built-in arch cushion and a laced construction that permits the shoe to conform immediately to the individual shape of the foot. No "break-in" is ever needed.

Women throughout the country have become well acquainted with the Wellco FOAMTREAD brand through the advertisements they've seen in LIFE, Parents' Magazine, Good Housekeeping, and in the newspapers. The Slacktator is currently being featured in LIFE.

ADVERTISED IN
LIFE

\$ 5.95



Elasticized waist inserts

PINAFORES with colored stripe

This is the approved uniform of the Junior Ladies Auxiliary with newly-added elasticized waist inserts for flattering fit. The elastic allows the Pinafore to grow with the wearer.

Sizes: XS (6-8), S (10-12), M (14-16), L (18-20)

#315—Sanf. Red and White Stripe CORDED CHAMBRAY.

Functional as well as attractive, this striped pinafore in 5 bright and cheerful colors is sturdily constructed and features 2 large skirt pockets, reinforced top and bottom.

Sizes: S (10-12), M (14-16), L (18-20), XL (42-44)

#316—Sanf. Blue and White Stripe CORDED CHAMBRAY

#317—Sanf. Lilac and White Stripe CORDED CHAMBRAY

#318—Sanf. Aqua and White Stripe CORDED CHAMBRAY

#319—Sanf. Gold and White Stripe CORDED CHAMBRAY



BLOUSES

#335 \$2.95

#336 \$3.95

SKIRT

#892 \$6.95

Blouse

The ideal complement to the skirt is Fashion Seal's short sleeved tailored blouse with an attractive convertible collar. Sizes 30-44.

#335—Sanf. White combed 100% COTTON BROADCLOTH.

#336—White 65% DACRON POLYESTER—35% COTTON BROADCLOTH.

Skirt

Smartly tailored sheath with built-in comfort and good looks. Stride pleat in back. Zipper closure in back of skirt. Waist sizes 22-32.

#892—Black 100% NYLON TAFFETA.

#360

\$8.95



PICTURED AT LEFT (NYLON TAFFETA)

Princess line, fitted three-quarter length smock. Its slimming lines plus careful tailoring give both maximum comfort and appearance. Button wrist-hugging cuffs. Attached pearl buttons.

Sizes: Small, Medium, Large.

#360 White, Aqua, Blue, Pink, Black.

(BE SURE AND GIVE COLOR)

#360

\$8.95

This solid color pinafore features the figure flattering elasticized waist inserts.

\$ 5.95



#322—Aqua Sanf. High Count Suiting
#323—Blue Sanf. High Count Suiting
#324—Rose Pink Sanf. High Count Suiting

#310—White Wash 'n Wear POPLIN

#320—Yellow INDIAN HEAD

#330—Grey INDIAN HEAD

#340—Approved Cherry Red Wash 'n Wear Fine BROADCLOTH

Sizes: S (10-12), M (14-16), L (18-20), XL (42-44).



Box style, loose fitting all purpose smock. Designed for comfort with full front and back gathered yokes. Button cuffs and full cut sleeves allows plenty of freedom. Attached pearl buttons. Finger tip length. Sizes: Small, Medium, Large, X-Large.

#350—Sanf. Cherry Red Wash'n Wear fine BROADCLOTH. \$4.95

#351—Sanf. White, Aqua, Blue, Green, Pink, Grey BROADCLOTH (Specify color when ordering).

\$4.95
#352—White, Aqua, Blue, Pink, Black NYLON TAFFETA (Specify color when ordering). \$6.95.

COTTON APRONS



\$7.99

DACRON SHANTUNG

STYLE 298

Pretty smock in White Rain Dacron Taffeta has reversible front closing; two pockets and set-in belt; soft pleats give peplum fullness; made in white, blue, pink and aqua. Sizes 8 through 20

**INDUSTRIAL
UNIFORM CO.**
143 SO. ROCK ISLAND
WICHITA, KANSAS

COMPLETE OVERALL PROTECTION



Your firm name may be written in script on aprons for 10¢ per word in any color thread.

PENCIL POCKET

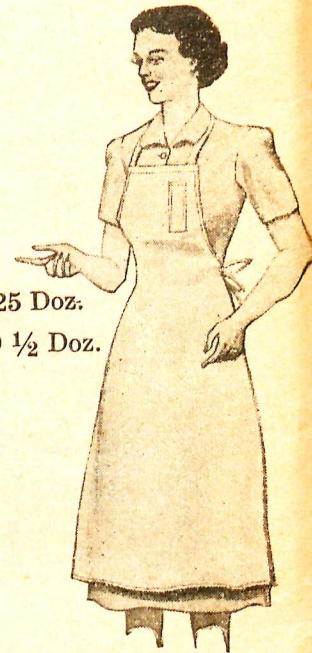


Heavy-Duty Bib Apron

This bib apron is a pleasure to have because it will really stand the gaff. It is made of 8-oz., full-bleached white duck. STOCK NO. 550
\$11.25 . . . PER DOZEN

-36x46"

PENCIL POCKET



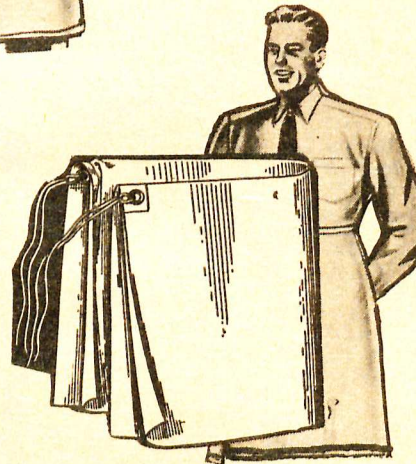
\$9.25 Doz.
\$5.00 1/2 Doz.

WOMEN'S BIB APRONS

No. 800—28x40" Fine White Drill
18" attached tie strings

AT ONCE DELIVERY

**MONEY BACK
IF NOT PLEASED**



MEN'S WAIST APRONS

4-Way, Heavy-Duty Cloth Apron

Everybody likes this apron. It is made of 8-oz., full-bleached white duck. Wears well and looks neat on the job.

-36x42"

STOCK NO. 350
\$10.50 . . . PER DOZEN

WHITE RUBBER
BIB APRON
Reinforced With
Cloth Back.
33" by 34"
3.25 EACH
STOCK NO. A119

**FREE
DELIVERY**

When Check With Order.
Open Account to Rated Firms
C.O.D. If You Prefer



The Answer to your Towel and Wiping Cloth Problems

"AB-SORB-IT" MASSLINN towels

Size 12 x 17

PACKED 100 TOWELS IN
HANDY DISPENSER CARTON

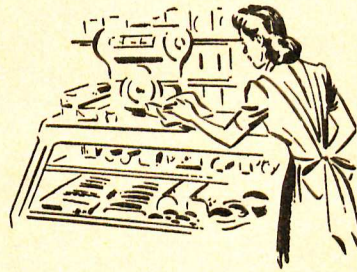
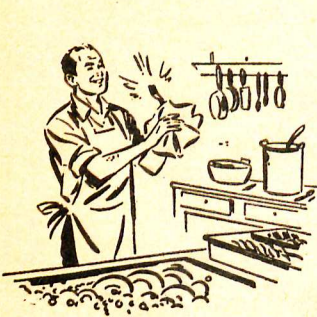
AS LITTLE AS

1 ³/₄¢ Per Towel

CAN BE WASHED AND REUSED
DISPOSABLE, Throw it Away After Use

~~NO~~ ~~NO~~ ~~NO~~
~~LAUNDERING~~ ~~PICK UPS~~ ~~LINT~~

ALL COTTON
SOFT AND
READY to USE



MONEY BACK -- IF NOT PLEASED



TEAR OFF HERE
INDUSTRIAL UNIFORM COMPANY
143 South Rock Island Wichita, Kansas

SHIP TO _____ Date _____

Street and Number _____

City _____ Zone _____ State _____

Indicate if Payment C. O. D. or by Check Amount Enclosed \$ _____

SAMPLE ORDER 100 AB-SORB-IT TOWELS	12" by 17"	\$2.95
400 AB-SORB-IT TOWELS 12" by 17" (Masslinn)	1 Box	\$9.95
1,200 AB-SORB-IT TOWELS 12" by 17" (Masslinn)	1 Case	\$23.00
10,000 AB-SORB-IT TOWELS 12" by 17" (Masslinn)		\$175.00

SEND NO MONEY . . . PAY POSTMAN C.O.D
OPEN ACCOUNT TO RATED FIRMS.
FREE DELIVERY When Check With Order

**AT ONCE
DELIVERY.**

SALES TAX
TOTAL



Deep-pleated action back
to avoid score-robbing bind!

\$3.95



SOLID COLOR

THE CONQUEROR
Men's Half Sleeve
Colors: Red, Yellow
Blue, White
Sizes: 14 to 20

THE LADY CONQUEROR
Ladies' Half Sleeve
Colors: Blue, White
Sizes: 30 to 50
Price: **\$3.95**



Extra-long shirt-tail
stays neatly tucked in place!

\$4.95



TWO-TONE

THE CONQUEROR TWO-TONE
Men's Half Sleeve
Yellow with Brown trim
Turquoise with Black trim
White with Peacock trim
White with Orange trim
Sizes: 14 to 20

THE LADY CONQUEROR TWO-TONE
Ladies' Half Sleeve
White with Orange trim
White with Peacock trim
Sizes: 30 to 50
Price: **\$4.95**

NO ORDER TOO SMALL

AT ONCE DELIVERY

Every Conqueror shirt is manufactured under rigid standards — to afford exceptional service, complete freedom in action, and unexcelled value. Note these fine features:

- Guaranteed Washable Luxury Fabric
- Matched Styles and Colors for Men and Women
- Convertible Collar with Sewn-in Stays
- Expert Styling with Full Length Shirt Tails
- Pleated Action Back, Free Swing Armholes
- Union Made

IMMEDIATE DELIVERY FROM STOCK!



THE CHESWICK JUNIOR
WHITE body with Navy yoke and collar
WHITE body with Red yoke and collar
\$3.95 Sizes: 8 to 18

LADY OVER-BLOUSE
Ladies' Half Sleeve
WHITE, NU-BLUE, LILAC
Pleated Action Back
Sizes: 30 to 50
\$6.50



ORDER Today

LETTERING

8¢

PER LETTER
2 INCH BLOCK
OR SCRIPT

WIN A \$1,000.00 U.S. SAVINGS BOND

Mail this coupon and get **FREE** complete Bowling shirt Catalogue and information on \$1,000.00 U.S. Government Bond.



Bowling Shirt

143 South Rock Island
Wichita, Kansas

----- TEAR OFF HERE -----

MY NAME

COMPANY

ADDRESS

CITY ZONE STATE

