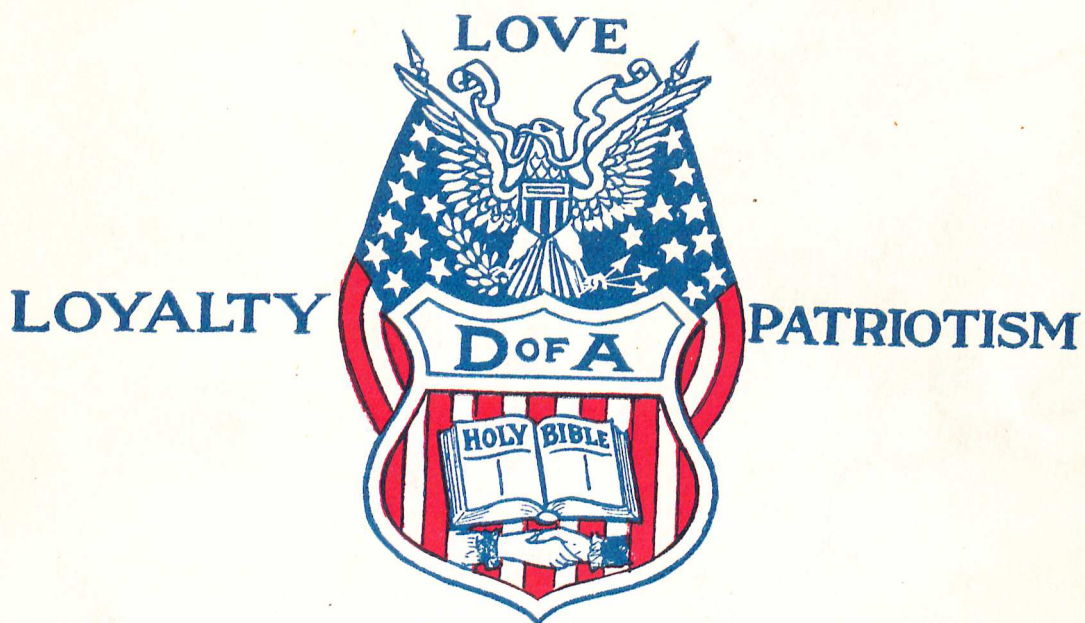


DAUGHTERS OF AMERICA

CATALOGUE NO 12



The
WARD-STILSON
Co.

ANDERSON, INDIANA

Catalogue No. 12

For

Daughters of America Councils

Costumes, Regalia and Supplies

Manufactured by

THE WARD-STILSON COMPANY ANDERSON, IND.

"In the Heart of Indiana"

"In the Heart of U. S. A."

PRICE LIST OF NATIONAL COUNCIL SUPPLIES

The National Council requires the money to accompany all orders for supplies. All orders must be written plainly and sent to Mrs. Julia T. Roth, National Secretary, 1526 Florencedale Ave., Youngstown, Ohio. Please allow fully four weeks' time for orders.

The following is a list of supplies that must be purchased from the National Council:

SUBORDINATE COUNCIL JEWELS

Design 1—Subordinate Council Members' Jewels (silver plate). Per dozen	\$7.50
Design 2—Subordinate Council Members' Jewels (bronze metal, silver plate). Per dozen.....	4.00
Subordinate Council Officers' Jewels (see description page 63, National Council Laws, 1912 edition). Per set	8.00
Past Councilor's Jewel (silver plate).....	1.25
Past Councilor's Jewel (silver plate, embossed and enameled)	2.00
Past Councilor's Jewel (sterling silver).....	3.50
Past Councilor's Jewel (sterling silver, embossed and enameled)	4.00
State Council Representative Jewel (bronze metal).....	1.35
State Council Representative Jewel (bronze metal, embossed and enameled).....	2.00

PAST STATE COUNCILORS', PAST NATIONAL COUNCILORS' AND NATIONAL REPRESENTATIVES' JEWELS

Gold Plate	2.50
Sterling Silver, gold plate	4.75
10K Gold	25.00
14K Gold	35.00
Deputy State Councilor's Jewel (white metal with monogram "D.S.C." in bronze).....	3.25
Deputy National Councilor's Jewel (gold plate).....	6.00
Leather Case for Jewels, each.....	0.75
Engraving name on back of jewel, 3c per letter or figure.	

APPLICATION FOR MEMBERSHIP BLANKS

Special printed with name, number and location of Council.

Per 100	\$1.50
Per 200	2.00
Per 250	2.20
Per 500	3.25
Per 1000	4.50
Application for Membership (in blank form). Per 100..	0.75

MISCELLANEOUS SUPPLIES

Note—If you live in a state having a State Council of the D. of A., order the following supplies from your State Council Secretary:

New Charter to replace old one.....	\$1.50
Rituals, per set of five.....	3.75
Funeral Ceremonies, per copy	0.30
Singing Ode Cards, per hundred	2.00
Music Book with words and music (small size).....	0.25
Music Book with odes and music (full sheet music size)	0.50
Pledge Books, each	0.75
Withdrawal, Dismissal, Traveling Cancellation or Transfer Cards, 12½c each, or, per dozen.....	1.50
National Laws, single copy (rates on 100).....	0.30
Order for the Pass Word, per hundred.....	1.00
Application for Membership (blank) per hundred.....	0.75
Digest of Decisions of the National Councilors, 1904-1921, each	0.35
Digest of Decisions of Ohio State Councilors, together with Decisions of Past National Councilors from 1904 to 1921, each	0.50
Seal, new design with small frame.....	4.00
Public Installation Form Book	0.75
Ritual Cases, flat keys, each	2.00
Official Receipts for Dues (50 in book).....	0.35

Terms and Conditions

Catalogue No. 12

When referring to this Catalogue give its number—No. 12.

Ordering

In ordering give name, number and price of each article. Please bear in mind that all costumes, banners, paintings and badges are made to your order and a reasonable length of time should be allowed to insure work up to our high standard.

Shipping

Specify whether you wish goods shipped by Parcel Post, Express or Freight. Freight shipments are at purchaser's risk of damage, loss or delay.

Unless otherwise ordered, we forward everything, except furniture, by Express.

On mail shipments purchaser must pay postage, and an amount sufficient to cover same is to be included when remittance accompanies the order.

Excess postage will be returned.

Guaranty

We guarantee all our goods to be strictly as represented. Anything found otherwise should be returned within thirty days, at our expense, for exchange, credit or "money back"; provided it is not *soiled* or damaged.

Any error made by us will be corrected wholly at our expense.

Remitting

Remittances must be made payable to The Ward-Stilson Company. They may be bank draft, express money order, postal money order, or check.

Prices

The Price List will be found in an envelope on the first inside cover, and for your convenience and reference should be kept there when not in use.

The Ward-Stilson Company
Anderson, Indiana

Officers' and Members' Collars



Cut 1



Cut 2

MEMBERS' COLLARS

Collars are carefully lined and interlined, trimmed with red, white and blue fringe on edges, red, white and blue satin rosette with raised center silver star.

- 400DA—Percaline, worsted bullion fringe.
- 401DA—Sateen, worsted bullion fringe.
- 402DA—Poplin, worsted bullion fringe.
- 403DA—Raynette, worsted bullion fringe.
- 404DA—Heavy Satin, worsted bullion fringe.
- 405DA—Silk finished velvet, silk bullion fringe.

OFFICERS' COLLARS

Collars are trimmed with silver bullion fringe and silver lace on edges, red, white and blue satin rosette with raised center silver star. Lined and interlined. Four collars in set have two silver stars each.

- 406DA—Sateen, silver bullion fringe.
- 407DA—Poplin, silver bullion fringe.
- 408DA—Raynette, silver bullion fringe.
- 409DA—Heavy satin, silver bullion fringe.
- 410DA—Silk finished velvet, silver bullion fringe.
- 411DA—Silk velvet, silver bullion fringe and silver wire lace on edges.



412DA — 413DA



414DA—415DA



416DA—417DA



418DA



419DA—420DA

JEWELRY

You will find all our jewelry bearing clear cut emblems, neatly engraved and finished in a very satisfactory manner. Every article is high-grade.

Brooch, the emblem and floral design nicely reproduced in gold and finest colored enamel.

- 412DA—Rolled Gold.
- 413DA—Solid Gold.

Pin, a popular sized pin in gold and finest colored enamel.

- 414DA—Rolled Gold.
- 415DA—Solid Gold.

Pin, large size, a pleasing design in gold and enamel.

- 416DA—Rolled Gold.
- 417DA—Solid Gold.

Ring, a handsome design in gold and colored enamel.

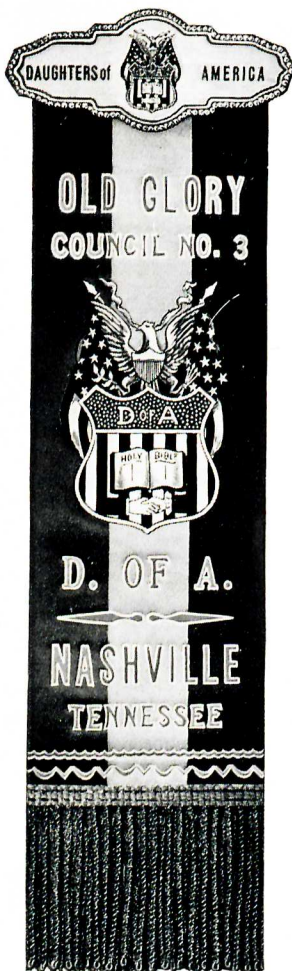
- 418DA—Solid Gold.

Pin, medium size, finely reproduced in gold and enamel.

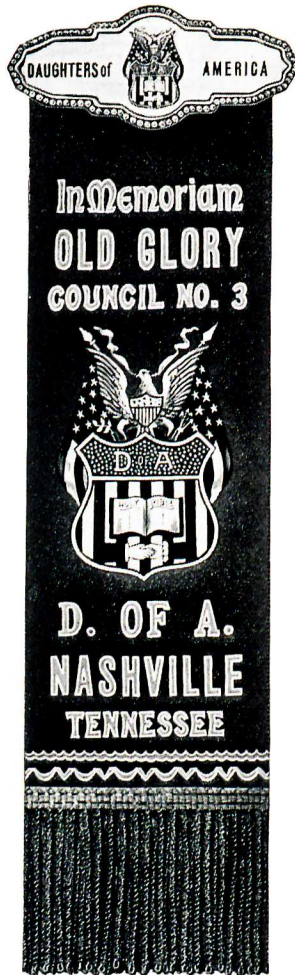
- 419DA—Rolled Gold.
- 420DA—Solid Gold.

PRICE LIST ON INSIDE FRONT COVER

Badges — Reversible



Parade Side
421DA to 426DA



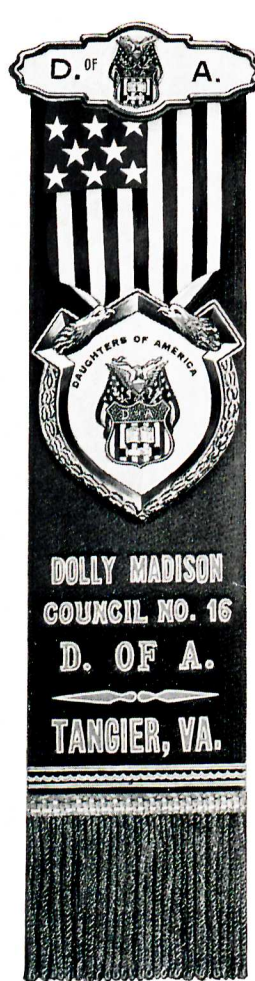
Funeral Side
421DA to 426DA

BADGE 421DA TO 426DA

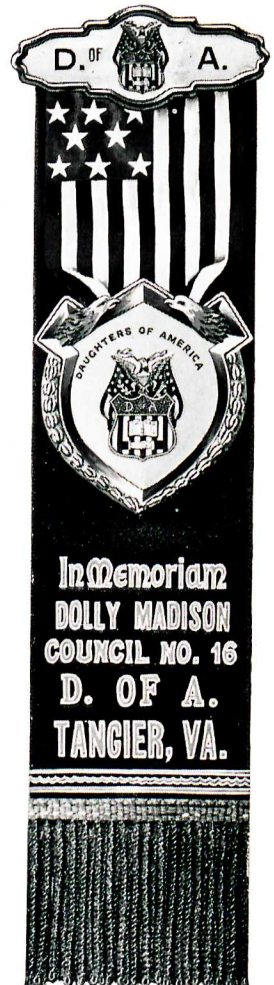
Parade Side, of red, white and blue satin ribbon. Name, Number, Location of Council and elaborate emblematic design embossed in pure gold or silver (aluminum) leaf. Two rows of gold or silver bullion fringe across bottom. Hanger has design in colors and words "Daughters of America".

Funeral Side, of rich black satin ribbon, with same wording as front except the additional matter "In Memoriam".

- 421DA— 12 or more
- 422DA— 25 or more
- 423DA— 50 or more
- 424DA— 75 or more
- 425DA—100 or more
- 426DA—150 or more



Parade Side
427DA to 432DA



Funeral Side
427DA to 432DA

BADGE 427DA TO 432DA

Parade Side, of lustrous blue satin ribbon. Name, Number and Location of Council embossed in pure gold or silver (aluminum) leaf. American silk flag pendant supporting fine ivory enamel medallion, which has elaborate gilt rim, and contains emblems of Order beautifully lithographed in colors. Two rows gold or silver bullion fringe across bottom. Emblematic hanger.

Funeral Side, embossed as front, but the additional "In Memoriam", and on black satin ribbon.

- 427DA— 12 or more
- 428DA— 25 or more
- 429DA— 50 or more
- 430DA— 75 or more
- 431DA—100 or more
- 432DA—150 or more

PRICE LIST ON INSIDE FRONT COVER

Badges — Reversible



Parade Side
433DA—438DA



Funeral Side
433DA to 438DA

BADGE 433DA TO 438DA

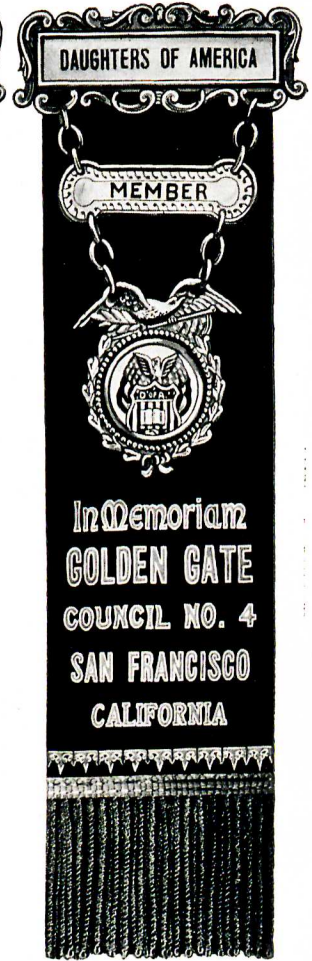
Parade Side, of red satin ribbon. Name, Number and Location of Council embossed in pure gold or silver (aluminum) leaf. Crossed American silk flags attached to white pendant, which supports 1 3/4-inch ivory enamel medallion, this containing D. of A. emblems in correct colors. Emblematic badge hanger.

Funeral Side, embossed like front, on black satin ribbon with matter "In Memoriam" additional. Two rows of gold or silver bullion fringe across bottom.

- 433DA— 12 or more
- 434DA— 25 or more
- 435DA— 50 or more
- 436DA— 75 or more
- 437DA—100 or more
- 438DA—150 or more



Parade Side
439DA to 444DA



Funeral Side
439DA to 444DA

BADGE 439DA TO 444DA

The metal parts of badge of solid brass, polished and finished, top bar having "Daughters of America", the center bar for "Member" or "Officer", as may be desired. The medallion has eagle on top, center containing emblems worked in appropriate colored enamel.

The **Parade Side**, of ribbon, is a heavy lustrous red, white and blue satin while the **funeral side** is a rich black. Both sides have Name, Number and Location of Council gold or silver embossed. Gold bullion fringe at the bottom, two rows.

- 439DA— 12 or more
- 440DA— 25 or more
- 441DA— 50 or more
- 442DA— 75 or more
- 443DA—100 or more
- 444DA—150 or more

PRICE LIST ON INSIDE FRONT COVER

U. S. Flags



MOUNTED BUNTING U. S. FLAGS

Flag Stands are not included with flags

- 445DA—Flag, 3x5 ft., Royal bunting (cotton), clamp dyed field, sewed stripes, fast colors. Oak finished hardwood staff, bronzed spear top. (No cord or tassels.)
- 446DA—Flag, 3x5 ft., "Invincible" bunting, sewed, 8-ft. oak finished staff, bronzed spear.
- 447DA—Flag, 3x5 ft., genuine cotton bunting, sewed stars and stripes, 8-ft. oak finished staff, brass spear top, yellow worsted cord and 5-inch tassels.
- 448DA—Flag, 4x6 ft., genuine cotton bunting, 8-ft. oak finished staff, brass spear top, large yellow worsted flag cord and 7-inch tassels.
- 449DA—Flag, 3x5 ft., all wool bunting, 8-ft. oak finished staff, brass spear top, yellow worsted cord and 5-inch tassels.
- 450DA—Flag, 4½x5½ ft., all wool bunting, 8-ft. oak finished staff, brass spear top, trimmed with large yellow worsted cord and 7-inch tassels and 2-inch yellow worsted bullion fringe.
- 451DA—Flag, 4½x5½ ft., all wool bunting, 8-ft. hand turned oak staff, brass screw joint, solid brass eagle, trimmed with large yellow silk cord and 7-inch tassels and 2-inch yellow silk bullion fringe.
- 452DA—Flag, 5x8 ft., all wool bunting, 10-ft. hand turned oak staff, brass telescope joint, brass spear top, trimmed with large yellow worsted flag cord and 7-inch tassels, 2-inch yellow worsted bullion fringe.
- 453DA—Flag, 5x8 ft., like 452DA, but solid brass screw joint and eagle top.
- 454DA—Flag, 5x8 ft., wool bunting, 10-ft. hand turned oak staff, solid brass screw joint and eagle, large yellow silk flag cord, 7-inch tassels, 2-inch yellow silk fringe.

MOUNTED SILK U. S. FLAGS

- 455DA—Flag, 2 2/3 x 4 ft., pongee silk, 6-ft. oak finished staff, bronze spear top.
- 456DA—Flag, 3x5 ft., pongee silk, 6-ft. oak finished staff, brass spear top, yellow silk cord, 5-inch silk tassels.
- 457DA—Flag, 3x5 ft., same as 456DA, but trimmed with 2-inch yellow silk bullion fringe.
- 458DA—Flag, 3x5 ft., flag silk, silk embroidered stars, 8-ft. oak finished staff, brass spear top, yellow silk cord, 5-inch silk tassels, 2-inch yellow silk fringe.
- 459DA—Flag, 3x5 ft., same as 458DA, but with 5-inch solid brass eagle.
- 460DA—Flag, 4½x5½ ft., banner silk, silk embroidered stars, 8-ft. oak finished staff, brass screw joint, solid brass eagle, yellow silk flag cord with 7-inch tassels, 2-inch yellow silk bullion fringe.
- 461DA—Flag, 5x8 ft., 10-ft. hand turned oak staff, otherwise like 460DA.

UNMOUNTED U. S. FLAGS

All Wool "Navy"

Double warp. This is the well known grade of wool bunting which is always superior. The colors are absolutely fast. The stripes are sewed with a lock-stitch. The stars are sewed on both sides with a zig-zag stitch. The fly end is reinforced by three rows of stitching. Strong canvas headings and brass grommets. Size 10 x 15 ft. and larger are furnished with strong rope and canvas heading combined. Complete number of stars on all sizes listed below.

- | | |
|------------------|-----------------|
| 462DA—2 x 3 ft. | 472DA—6x 9 ft. |
| 463DA—2½x 4 ft. | 473DA—6x10 ft. |
| 464DA—3 x 5 ft. | 474DA—6x12 ft. |
| 465DA—3 x 6 ft. | 475DA—7x14 ft. |
| 466DA—4¼x 5½ ft. | 476DA—8x12 ft. |
| 467DA—4 x 6 ft. | 477DA—8x15 ft. |
| 468DA—4 x 7 ft. | 478DA—9x14 ft. |
| 469DA—4 x 8 ft. | 479DA—10x15 ft. |
| 470DA—5 x 8 ft. | 480DA—10x18 ft. |
| 471DA—5 x10 ft. | 481DA—10x20 ft. |

UNMOUNTED U. S. FLAGS

"Invincible" Bunting

Double warp and filling, a strictly high-grade bunting recommended and used by the Government for outdoor use. Fast colors, moth-proof. Same weave and appearance as wool bunting. Wears as well as wool. The stripes are sewed with a lock-stitch. The stars are sewed on both sides with a zig-zag stitch. The fly end is reinforced by three rows of stitching. Strong canvas headings and brass grommets. Size 10 x 15 ft. and larger are furnished with strong rope and canvas heading combined. Complete number of stars on all sizes listed below.

- | | |
|-----------------|-----------------|
| 482DA—2 x 3 ft. | 491DA—5x10 ft. |
| 483DA—2½x 4 ft. | 492DA—6x 9 ft. |
| 484DA—3 x 5 ft. | 493DA—6x10 ft. |
| 485DA—3 x 6 ft. | 494DA—6x12 ft. |
| 486DA—4 x 6 ft. | 495DA—8x12 ft. |
| 487DA—4 x 7 ft. | 496DA—8x15 ft. |
| 488DA—4 x 8 ft. | 497DA—10x15 ft. |
| 489DA—5 x 8 ft. | 498DA—10x18 ft. |
| 490DA—5 x 9 ft. | 499DA—10x20 ft. |

FLAG CARRYING BELTS

- 500DA—Belt, leather, non-adjustable.
- 501DA—Belt, leather, adjustable in size.
- 502DA—Belt, leather, double straps, passing over both shoulders instead of around the neck, both straps adjustable. Very desirable for heavy flags.

FLAG COVER

- 503DA—Flag Cover, waterproof.

PRICE LIST ON INSIDE FRONT COVER

Parade Banners



504DA — 505DA

If you desire something special in Parade Banners, our artists and designers with their years of experience will gladly co-operate with you to obtain any design, shape or color effect you may desire. The banner as shown, with your Council Number, Name and Location and D. of A. emblem is listed below.

504DA—Banner, 30 x 45 inches, body and lambrequin of fine banner satin, of contrasting colors, silk back. Suspended on each side are wide silk plush pendants bound on edges by silk cords, with neat design of silk soutache of different colors. Name, Number and location of Council, scroll work and D. of A. emblem in gold leaf and oil colors. Trimmed in fine gold bullion banner tassels, cords, fringe and laces. Jointed hardwood staff, fine gilt spear, banner balance, rings, chains, cross bar and ends.

505DA—Banner, 24 x 36 inches, of silk, silk back, no banner balance, otherwise like 504DA.

ACCESSORIES

506DA—Belt, leather, shoulder, with socket for carrying.

507DA—Belt, like 506DA, but adjustable.

508DA—Belt, leather, with socket, double straps, adjustable.

509DA—Cover, dust and water-proof.

510DA—Funeral Drape, fine silk crepe.

FLAG AND BANNER STANDS



511DA



512DA



513DA



514DA



515DA

511DA—Stand, of wood, turned, painted and varnished, base 9 inches, being broad enough to insure its standing upright.

512DA—Stand, metal base, handsome design, finished in silver aluminum. The standard is of oak, turned, good finish.

513DA—Stand, of selected oak, the design entirely new and is an exceptionally handsome stand.

514DA—Stand, iron, 10-inch base, bronzed.

515DA—Stand, iron, extra large, bronzed, ornamented base, heavy.

CAPTAIN'S CALL

516DA—Signal, or Captain of the Degree Team's Call, is made of solid metal with thin steel tongue, very resonant, slightly indented so that by pressing the thumb downward and releasing quickly will produce a sharp, decisive click. They are very useful in handling of the Team.

PRICE LIST ON INSIDE FRONT COVER

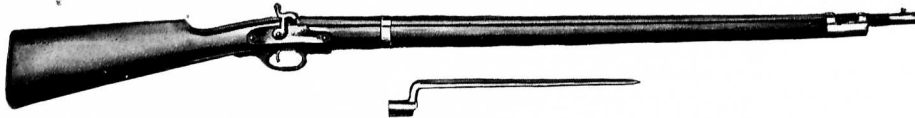
School House



517DA — 518DA

- 517DA—School House, painted as illustrated on heavy canvas over wood frame, sectioned and hinged so that it easily folds up and can be stored in small space. Has hinged door in front. Size 3½ feet wide, 4½ feet long and 5½ feet high to gable of roof. (Flag and staff not included.)
- 518DA—School House, made same as 517DA, but 4 feet wide, 5 feet long and 6 feet high to gable of roof, large enough to accommodate altar inside. (Flag and staff not included.)

QUAKER MUSKETS



These muskets are fitted with metal trigger, guard and hammer for use in firing caps.

- 519DA—Quaker Musket, imitation of genuine musket, finished wooden barrel and stock, metal trigger, guard and hammer, metal bayonet. Length of musket 42 inches, bayonet 12 inches, weight 2½ pounds.

- 520DA—Quaker Musket, angular metal bayonet, metal trigger, guard, hammer and barrel bands, wooden barrel and stock nicely finished. Length of musket 48 inches, bayonet 12 inches, weight 3¼ pounds.

- 521DA—Quaker Musket, imitation Springfield rifle, stained and finished wooden barrel and stock, angular bayonet, all metal parts are well finished. Length 48 inches, weight 4½ pounds. Best grade of Quaker guns.

UNCLE SAM'S WIG AND BEARD

- 522DA—Uncle Sam's Wig, full gray, mounted on netting with flesh colored front piece, genuine yak hair.
- 523DA—Uncle Sam's Beard, mounted on silk gauze, color gray, genuine yak hair.



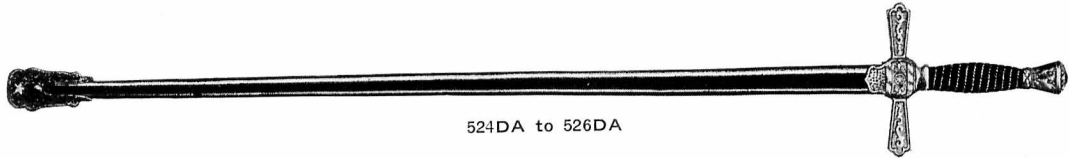
522DA



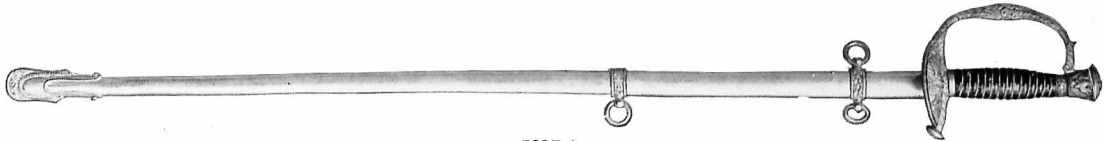
523DA

PRICE LIST ON INSIDE FRONT COVER

Miscellaneous
Swords and Belts



524DA to 526DA



528DA

524DA—Sword, long pattern, black enameled metal scabbard, polished brass mountings, oval steel blade, black twist grip wrapped with fancy wire, with button for carrying in a throg. A good cheap sword.

525DA—Sword, long pattern, nickel plated mountings, otherwise like 524DA.

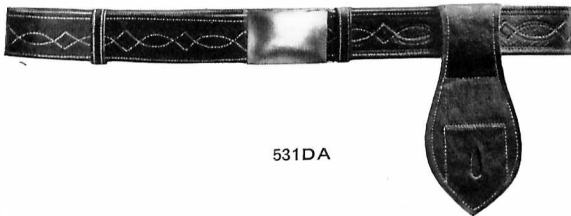
526DA—Sword, long pattern, full nickel plated mountings,

nickel plated metal scabbard with button, black twist grip wrapped with fancy wire, oval steel blade.

527DA—Sword, same as 526DA, but having two rings for chain belt.

528DA—Sword, full length, nickel plated scabbard with gold mountings, gold plated hilt and guard, black grip wrapped with gold wire, three rings on bands, diamond steel blade. An extra fine sword.

SWORD BELTS



531DA



533DA

529DA—Waist Belt, of red leather, fancy creased, heavy polished brass buckle, adjustable. Red leather throg. For swords with stud or button.

530DA—Waist Belt, of red leather, fancy creased, red leather throg for swords with studs, handsome polished brass eagle buckle plate, adjustable.

531DA—Waist Belt, of fine scarlet enameled leather, fancy creased, silk stitched, plain polished brass buckle plate, adjustable leather throg, for swords with stud or button.

532DA—Waist Belt, made same as 531DA, but with fine polished brass eagle belt plate, adjustable.

533DA—Waist Belt, fine quality enameled leather, interlined, silk stitched, with silk stitched design running through center, plain gold plated buckle and two gold plated chains rather than throg. For swords with rings.

534DA—Waist Belt, same as 533DA, except has handsome gold eagle buckle plate.

TABLEAU REFLECTORS

535DA—Tableau Reflector, of heavy sheet steel metal, made adjustable for throwing light at different angles, gold bronzed, thus improving its reflective powers.

536DA—Tableau Reflector, made of brass, heavily nickel plated, adjustable in height. Cone supporter and weighted base.



535DA

FIRE CONES

In the degree work where the tableau is used, nothing is so pleasing or effective as the use of Fire Cones. It increases the dramatic results wonderfully.

Red Fire Cones, with instantaneous igniting tips, large size, burning a great length of time, harmless and free from sulphur.

537DA—Box of 12

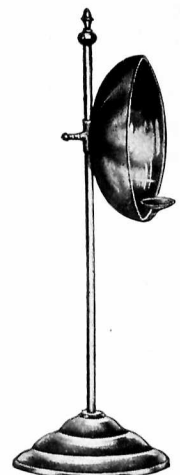
538DA—6 boxes

Green Fire Cones, with instantaneous igniting tips, large size, long burning, no sulphur, absolutely harmless.

539DA—Box of 12

540DA—6 boxes

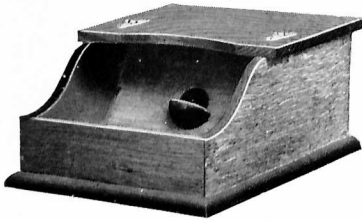
Note—U. S. Postal Regulations forbid the shipment of Fire Cones by mail. We must therefore ship by Express.



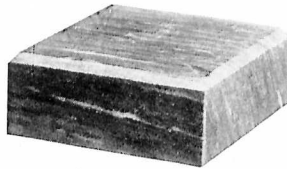
536DA

PRICE LIST ON INSIDE FRONT COVER

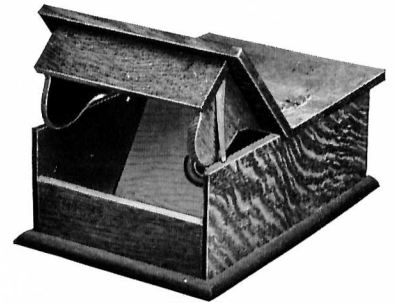
Miscellaneous



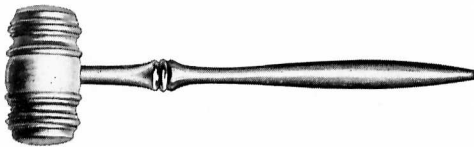
541DA to 544DA



555DA to 557DA



545DA



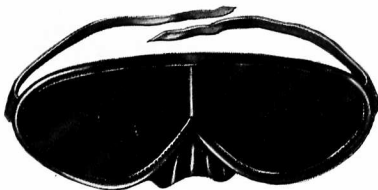
550DA



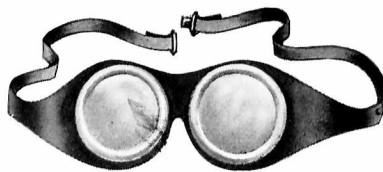
558DA



551DA to 553DA



560DA



561DA



562DA

BALLOT BOXES

- 541DA—Ballot Box, semi-secret, sliding partition with lip, hinged top, well made, mahogany finish.
- 542DA—Ballot Box, semi-secret, sliding partition with lip, hinged top, extra well made, walnut finish.
- 543DA—Ballot Box, semi-secret, oak, varnished, sliding partition with lip, hinged top.
- 544DA—Ballot Box, semi-secret, handsomely figured, quarter-sawed oak, sliding partition with lip, bottom felt lined. Specially finished.
- 545DA—Ballot Box, full secret, quarter-sawed oak, sliding partition with ring, felt lined bottom, improved.

BALLOTS

- 546DA—Ballots, of china, white and black, all round, glazed.
- 547DA—Ballots, for secret balloting, the white ones are china, round, and the black ballots are cubes, ebony.
- 548DA—Ballots, of rubber, for secret balloting, either round or cube, very superior articles.
- 549DA—Ballots, of glass, very fine, round, white and black.

GAVELS

- 550DA—Gavel, neatly designed, handle and head turned, beaded and well finished. Edges constructed so they will not chip off.
- 551DA—Gavel, of rosewood, natural finish, polished, bringing out its deep richness of color.

- 552DA—Gavel, ebony, natural finish, polished.
- 553DA—Gavel, of osage wood, fine natural finish, polished, rich in appearance.

IVORY PRESENTATION GAVELS

- 554DA—Gavel, of ivory, medium size, ebony handle, beautifully finished and polished.

GAVEL BLOCKS

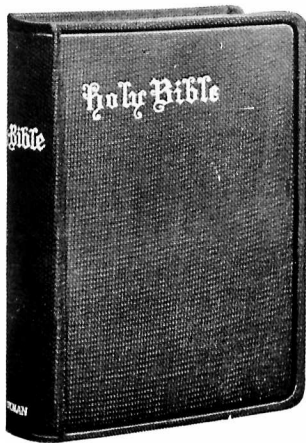
- 555DA—Gavel Block, walnut, natural finish, polished, bottom covered with felt.
- 556DA—Gavel Block, unpolished marble, well shaped and very neat in appearance, bottom covered with cloth.
- 557DA—Gavel Block, marble, of finest quality, polished, well shaped, neat, cloth covered bottoms.

HOODWINKS

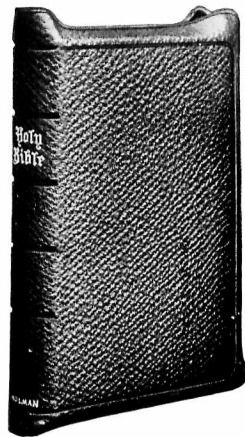
- 558DA—Hoodwink, stiff cloth, tie strings for fastening, shaped to fit the face.
- 559DA—Hoodwink, same as 558DA, except covered with black satin.
- 560DA—Hoodwink, velvet, tie strings for fastening, shaped.
- 561DA—Hoodwink, made of soft pliable rubber with fibre fronts, absolutely tight, sanitary, fastens easily.
- 562DA—Hoodwink, japanned metal and black leather, velvet lined, eye fronts arranged to open and close without removing.
- 563DA—Hoodwink, with spring attachment at back, easy to remove, otherwise the same as 562DA.

PRICE LIST ON INSIDE FRONT COVER

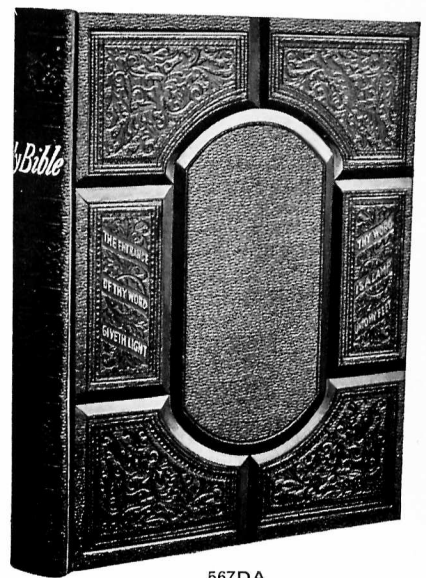
Miscellaneous



564DA — 565DA



566DA



567DA

BIBLES

The line of Bibles we are offering is carefully selected for Council purposes. The printing is in large plain type, on high-grade paper, and books are all bound in best materials.

We will emboss in gold on a fine red, white and blue ribbon marker. **Name and Number of Council and emblem.** (See Price List.)

564DA—Bible, size 4¼x5¾x1⅜ inches, best imitation roan leather, gold embossed title on back and cover, round corners, red burnished edges.

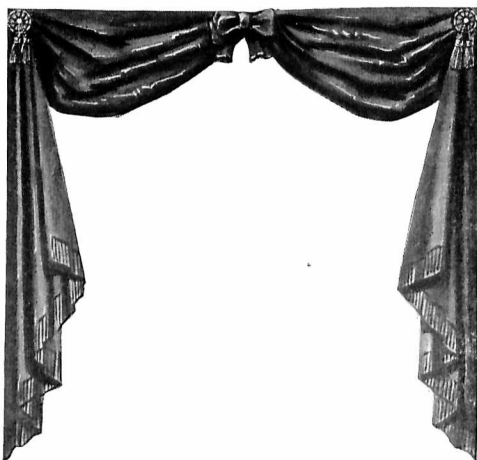
565DA—Bible, 4¼x6¾x1⅜ inches, genuine leather, limp sides, round corners, gold embossed title on back and cover, red burnished edges.

566DA—Bible, 4¼x6¾x1⅜ inches, divinity circuit, French Morocco leather covers, lining of finest quality linen, edges decorated with red under gold, title gold embossed on back.

567DA—Bible, size 12¾x10¾ inches, high-grade imitation leather, arabesque, beautifully paneled, gold edges, large clear type, marginal references containing Old and New Testament, Apocrypha and Concordance.

Note—Our complete line of Presentation Bibles sent upon request.

CHARTER DRAPES



568DA

Here is a drape made purposely for the Charter, which can be stored away in small space when not in-use, is ready at a moment's notice, looks well and fits well.

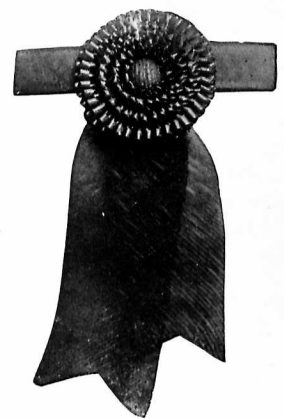
568DA—Charter Drape, of crepe cloth, black rosettes and tassels at ends, with black bow at center, drape trimmed on edges with fringe and open work lace. The lace and fringe on edges and tassels at corners of black silk.

569DA—Charter Drape, same as 568DA, but without fringe around edges.

FUNERAL ROSETTES



570DA



571DA

570DA—Funeral Rosette, made of black crepe material, including arm band, rosette and streamers, rosette with silver spangled star in center. Has patent fastener arrangement for instantly removing or putting on.

571DA—Funeral Rosette, of black crepe material, adjustable arm band, fine satin ribbon, quilled rosette.

PRICE LIST ON INSIDE FRONT COVER

Hall Lanterns



572DA to 574DA



580DA — 581DA



575DA to 577DA

LANTERN 572DA TO 574DA

The illustration is of our square lantern, which will contain the Name, Number of Council and D. of A. emblematic design. Satisfactory for electricity and being wind-proof works perfectly with oil. If you use oil, your lamp should have a chimney on the inside. Front glass is 14x10 inches, sides 14 x 8 inches, height 18 inches. Made of best heavy sheet tin, thoroughly painted, to withstand being exposed to all kinds of weather.

572DA—Lantern, with oil lamp.

573DA—Lantern, with electric lamp.

574DA—Lantern, with electric lamp and one flasher.

LANTERN 575DA TO 577DA

Special Cold Blast Tubular Square Lantern, made of very best heavy sheet tin, satisfactory for either oil or electricity, wind-proof, perfect combustion, no smoke when oil is used. Has 8-inch silvered glass reflector within. Lantern is 21 inches high, front glass 11¾x9½ inches, side glass 11¾x8½ inches. Has D. of A. emblematic design on sides, and Name, Number of Council and design painted on the front.

Our frosted glass slides have a feature that cannot be supplied in the ordinary hall lantern where plain glass slides are used.

The light is subdued on the plain section of glass, thus bringing out the lettering and emblematic part in a way that is both pleasing and attractive. We use the frosted glass in our lanterns.

575DA—Lantern, with oil lamp.

576DA—Lantern, with electric lamp.

577DA—Lantern, with electric lamp and one flasher.

FLASHERS

A Flasher is a device to be used in connection with electric hall lanterns, which automatically throws the light on and off at regular intervals, or burns continuously.

This is a very attractive and satisfactory way of securing attention to your hall sign. They get results.

578DA—Extra flashers will be furnished.

INTERCHANGEABLE SLIDES

All slides are manufactured from frosted glass, the lettering and emblems painted in colors. We furnish slides for any society.

579DA—Extra slides.

INFORMATION YOU MUST FURNISH

If you order a lantern with electric lamp, you must give the voltage of your lighting system, and whether the current is alternating or direct. This information is absolutely necessary.

HALL LANTERN GLOBES

These globes placed at the front, foot of stairs or entrance to hall make a welcome sign for visitors and brethren alike. Can be used with either gas or electricity.

580DA—Globe, 10 inches in diameter, with Name, Number, emblem and letters painted on both sides.

581DA—Globe, same as 580DA, but 12 inches in diameter.

PRICE LIST ON INSIDE FRONT COVER

Miscellaneous



583DA

SEALS

Our seals are all fitted on strong, durable lever presses, and will give entire satisfaction. The presses are japanned and ornamented in gold bronze and colors. The handles have nickel plated tops. We use oil tempered springs of great strength, which very much improve the action and life of the press.

It is very important that you give the exact matter you wish on the seal. Your seal, to be legal, must contain the



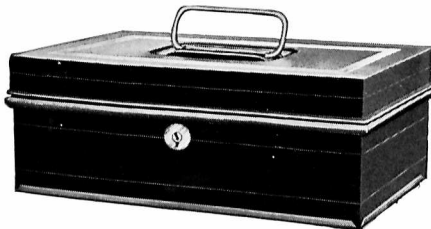
Illustration Showing Press Used

Name, Number, Location of Council and date of Institution. Be sure to give this correctly. Write the matter very plainly. The life of our seals is almost unlimited.

582DA—Seal, size of plate 1¾ inches, with Name, Number, Location of Council, date of Institution and letters "D. of A."

583DA—Seal, 2-inch plate, with Name, Number and Location of Council, date of Institution and D. of A. emblem. The emblematic feature makes this seal especially attractive.

RITUAL CASES

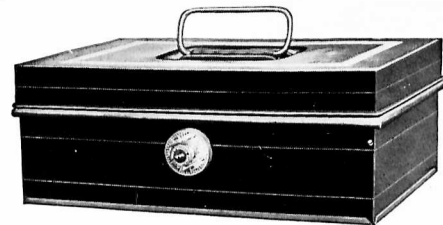


584DA — 585DA

584DA—Ritual Case, of extra heavy tin, japanned and ornamented in bronze, handle recessed into cover. This case is very durably made, having best three-tumbler lock and two flat keys. Size 6¾x10½x4 inches, inside measurement.

585DA—Ritual Case, similar in construction to 584DA, the size of this case being 7¾x10¾x5¼ inches, inside measurement.

586DA—Ritual Case, having Acme Dial Combination Lock, the best manufactured. The combination can be changed an unlimited number of times. Body of an



586DA—587DA

extra heavy tin, handsomely finished, being ornamented in bronze, nickel plated dial, recessed handle, inside measurement 7 x 10¼ x 4 inches. We call special attention to the ritual cases with combination locks, inasmuch as there are no keys to lose. It happens often that the officer in charge will lose or forget the key to ritual case and thus delay the meeting. The trouble is entirely eliminated with the use of combination lock.

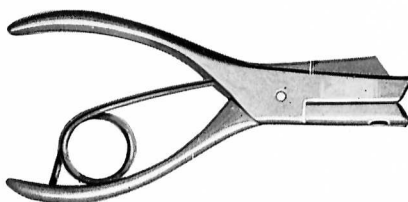
587DA—Ritual Case, same as 586DA, but larger. Size 7¾x10¾x5¼ inches, inside.

POST CARD PUNCHES

Post Card Punches are for use in punching day of the week, date, time and purpose of meeting on the margin of post cards, saving your Secretary much time and labor. Made of tool steel, the punching dies ground and beveled.

588DA—Punch, polished steel, well made.

589DA—Punch, steel nickel plated, a very desirable and satisfactory article.



588DA — 589DA

PRICE LIST ON INSIDE FRONT COVER

Special Ruled and Printed D. of A. Minute Book

Hall of

Opening	Council met on _____ session, and was opened in due form, with _____ Councilor, presiding.
Roll Call	Roll of officers called and the following stated as absent: _____
Reading of Minutes Reports of Special Committees	Minutes of meeting held _____ read and _____ The Royal Commission, through _____ reported _____
Reports of Committees of Investigation	Committee of Investigation on the proposition of M _____ reported _____ favorably to _____ admission. That on the proposition of M _____ reported _____ favorably _____
Rolling for Candidates	Ballot was taken and M _____ declared _____ elected
Initiation	M _____ being in meeting _____ prepared, introduced and duly initiated in accordance with the Ritual
Collection of Dues	Dues were collected as follows: _____
Reports of Special Committees	
Reports of Special Committees and Officers	
Proposition for Membership	The proposition for membership of M _____ was read and referred to _____ investigating Committee. The proposition of M _____ also read and referred to investigating Committee, consisting of _____

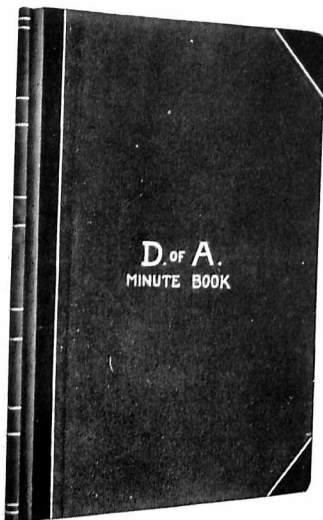
Left Hand Page 590DA

Council No. _____, D. of A.

Special Business																					
New Business																					
Minutes																					
Cost of the Order																					
Receipts of the evening:	<table border="0"> <tr> <td>Application fees</td> <td>\$ _____</td> </tr> <tr> <td>Initiation fees</td> <td>\$ _____</td> </tr> <tr> <td>Weekly dues</td> <td>\$ _____</td> </tr> <tr> <td>F. B. A. assessments</td> <td>\$ _____</td> </tr> <tr> <td>Miscellaneous</td> <td>\$ _____</td> </tr> <tr> <td>Total Receipts of evening</td> <td>\$ _____</td> </tr> <tr> <td>Balance from last meeting</td> <td>\$ _____</td> </tr> <tr> <td>Total</td> <td>\$ _____</td> </tr> <tr> <td>Disbursements</td> <td>\$ _____</td> </tr> <tr> <td>Balance on hand</td> <td>\$ _____</td> </tr> </table>	Application fees	\$ _____	Initiation fees	\$ _____	Weekly dues	\$ _____	F. B. A. assessments	\$ _____	Miscellaneous	\$ _____	Total Receipts of evening	\$ _____	Balance from last meeting	\$ _____	Total	\$ _____	Disbursements	\$ _____	Balance on hand	\$ _____
Application fees	\$ _____																				
Initiation fees	\$ _____																				
Weekly dues	\$ _____																				
F. B. A. assessments	\$ _____																				
Miscellaneous	\$ _____																				
Total Receipts of evening	\$ _____																				
Balance from last meeting	\$ _____																				
Total	\$ _____																				
Disbursements	\$ _____																				
Balance on hand	\$ _____																				
Members present																					
Value																					
There being no further business, Council closed at _____ P. M.																					

Right Hand Page 590DA

The photographic illustrations show the cover, right and left hand pages of our "Special Ruled and Printed D. of A. Minute Book". It conforms to the order of business and covers the field of usefulness for such a record. The ease and rapidity, as well as time saved the Secretary, make it a pleasure to serve in that capacity. The value of your Council records depends upon the accuracy with which they are kept. Your value as a Council Secretary depends upon the careful manner in which you do your work.



Cover of 590DA

590DA—Minute Book, 320 pages, 8 3/4 x 14 1/2 inches, of which 20 pages are plain ruling in the back for recording resolutions, etc. Will record 150 meetings. Red Russia leather binding on back and corners, rolled in gold, corners rounded, black pebbled cloth sides, title "D. of A. Minute Book" embossed in pure gold on front cover.

Weight, 5 pounds.

BLOTTER MINUTE LEAVES

591DA—Published for Secretaries who desire during the regular meetings to draft rough minutes, these to be rewritten in their regular Minute Book, at their leisure, in better shape than they have time to when Council is in session. They are like 590DA in form, put up in pads of 100 each.

Weight, 2 pounds.

MISCELLANEOUS

592DA—Cushing's Parliamentary Practice, bound in good cloth, the latest revised edition. Weight, 1 lb.

593DA—Robert's Rules of Order, good cloth binding. Weight, 1 lb.

594DA—U. S. Infantry Tactics. Now official with U. S. Government. Very complete but easily understood. Weight, 1 lb.

PRICE LIST ON INSIDE FRONT COVER

The One Successful Ledger for Keeping an Accurate Record of Dues Paid Weekly

166

In Account with _____ Beginning 1 _____

THE WARD-STILSON CO., NEW LONDON, CONN.

		DR.				CR.			
Admitted								
By	To Initiation				By			
Withdraw								
Suspended								
Expelled								
Reinstated								
Age when Elected years	" Card Fees							
Residence	" Reinstatement Fees							
Dead								

19	Dr.	Cr.	19	Dr.	Cr.	19	Dr.	Cr.	19	Dr.	Cr.
Bal. Forw.			Jan			Jul			Jan		
"			"			"			"		
"			"			"			"		
"			"			"			"		
"			"			"			"		
Feb.			Mar			Aug			Nov		
"			"			"			"		
"			"			"			"		
"			"			"			"		
"			"			"			"		
Mar.			June			Sept			Dec		
"			"			"			"		
"			"			"			"		
"			"			"			"		
"			"			"			"		
Balance			Balance			Balance			Balance		
Total			Total			Total			Total		

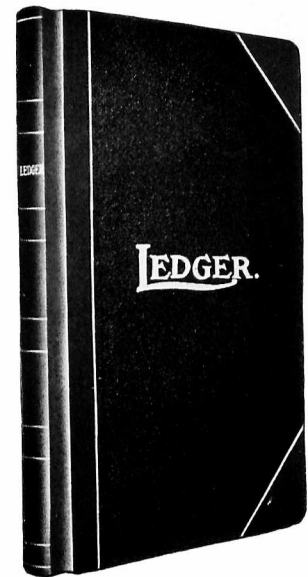
19	Dr.	Cr.	19	Dr.	Cr.	19	Dr.	Cr.	19	Dr.	Cr.
Bal. Forw.			Jan			Jul			Jan		
"			"			"			"		
"			"			"			"		
"			"			"			"		
"			"			"			"		
Feb.			Mar			Aug			Nov		
"			"			"			"		
"			"			"			"		
"			"			"			"		
"			"			"			"		
Mar.			June			Sept			Dec		
"			"			"			"		
"			"			"			"		
"			"			"			"		
"			"			"			"		
Balance			Balance			Balance			Balance		
Total			Total			Total			Total		

19	Dr.	Cr.	19	Dr.	Cr.	19	Dr.	Cr.	19	Dr.	Cr.
Bal. Forw.			Jan			Jul			Jan		
"			"			"			"		
"			"			"			"		
"			"			"			"		
"			"			"			"		
Feb.			Mar			Aug			Nov		
"			"			"			"		
"			"			"			"		
"			"			"			"		
"			"			"			"		
Mar.			June			Sept			Dec		
"			"			"			"		
"			"			"			"		
"			"			"			"		
"			"			"			"		
Balance			Balance			Balance			Balance		
Total			Total			Total			Total		

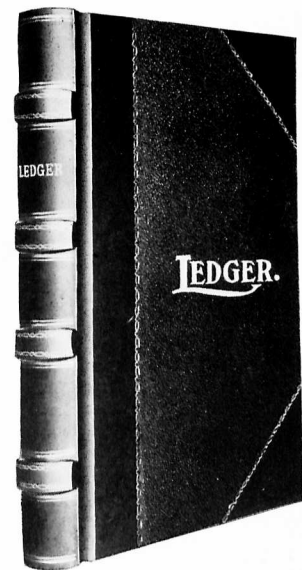
Form of 595DA to 597DA

This photograph shows a page from our Special Ruled and printed Weekly Ledgers. The only difference in the books is the number of pages and the binding, as all have the same quality of heavy, high-grade Ledger paper.

There has been a very large demand for a Ledger that would permit dues being paid weekly. This book we have designed for that purpose, and it is so simple, yet so thorough and complete that the Secretary can keep an absolutely reliable account with each individual member on the **Weekly dues plan**. Each page covers a period of three years. For any secretary desiring such a Ledger there is none more complete. In addition, our Ledger shows **date of admission, withdrawal, suspension, expulsion, reinstatement, death, etc.**, making a record that can be accurately referred to at any time.



Cover of 595DA-596DA



Cover of 597DA

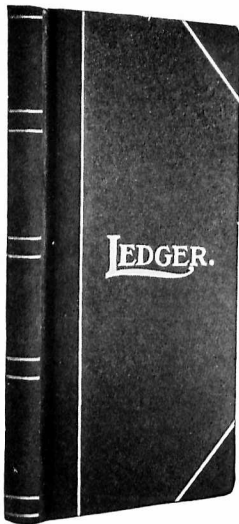
595DA—Ledger, 100 pages, size 10½x16 inches, good Ledger stock, paged and indexed, red Russia leather on back and corners rolled in pure gold, black pebbled cloth sides, corners of books rounded, title "Ledger" gold embossed on front cover.
Weight, 3 pounds.

596DA—Ledger, in all respects similar to 595DA, except has 300 pages, and is more heavily bound.
Weight, 6 pounds.

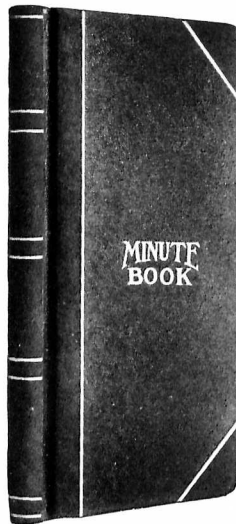
597DA—Ledger, form of ruling same as 595DA, but has 500 pages and is very heavily bound, having spring back and hubs, and leather gold embossed index tabs. Title is embossed on front cover and back.
Weight, 11 pounds.

PRICE LIST ON INSIDE FRONT COVER

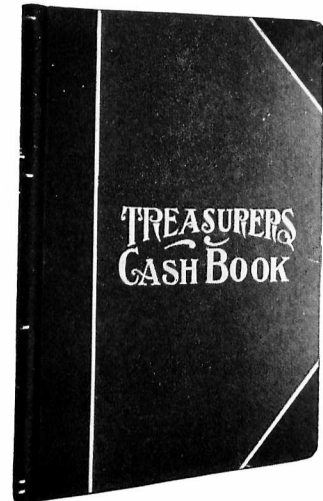
Ledgers, Minute and Treasurer's Cash Books



Cover of Ledgers



Cover of Minute Books



Cover of 602DA

Treasurer's Cash Book						
RECEIPTS						
DATE	RECEIVED FROM	RECEIPT NUMBER	BENEFITS	GENERAL	TOTAL	

Left Hand Page of 602DA

Treasurer's Cash Book						
DISBURSEMENTS						
DATE	PAID TO	ORDER NUMBER	BENEFITS	FUNERAL	GENERAL	TOTAL

Right Hand Page of 602DA

PLAIN RULED LEDGERS

598DA—Ledger, 200 pages, 9 x 14 1/4 inches, regular double entry ruling, without printed headings, good quality ledger paper, paged, indexed, opens flat, black pebbled cloth sides, red Russia leather back and corners, corners rounded, rolled in pure gold, title "Ledger" gold embossed on front cover.

Weight, 4 pounds.

599DA—Ledger, 300 pages, 9x14 1/4 inches, paged and indexed, high-grade ledger stock, plain double entry ruling, without printed headings, books extra well bound, having finest grade red Russia leather back and corners, corners rounded, rolled in gold, black pebbled cloth sides, opens flat, title "Ledger" gold embossed on front cover.

Weight, 4 pounds.

PLAIN RULED MINUTE BOOKS

600DA—Minute Book, 200 pages, 8 3/4 x 14 inches, paged, good paper, without printed headings, well bound, opens flat, black pebbled cloth sides, red Russia leather back and corners, rolled in gold, corners of cover rounded, title "Minute Book" gold embossed on front cover.

Weight, 4 pounds.

601DA—Minute Book, 300 pages, 9x14 1/4 inches, paged, good quality paper, without printed headings, firmly bound, opens flat, black pebbled cloth sides, red Russia leather back and corners, rolled in gold, corners of cover rounded, title "Minute Book" gold embossed on front cover.

Weight, 4 pounds.

TREASURER'S CASH BOOK

602DA—Treasurer's Cash Book, 100 pages, 8 1/2 x 11 inches, page for "Receipts" showing date, from whom and source from which money is received. Opposite page showing "Disbursements"—dates, to whom and for what purposes money is paid out. Very complete. Black pebbled cloth sides, Russia leather back and corners rolled in gold. Printed on good paper, title, "Treasurer's Cash Book" gold embossed on front cover.

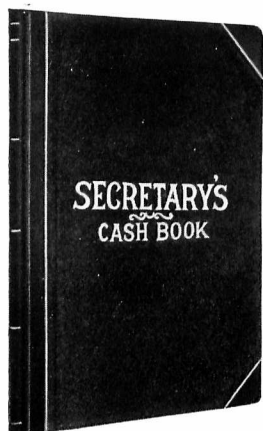
Weight, 2 pounds.

603DA—Treasurer's Cash Book, in every respect like 602DA, but has 160 pages.

Weight, 2 pounds.

PRICE LIST ON INSIDE FRONT COVER

Secretary's Cash Book



Cover of 604DA

Collections for				Council No.			
THE WARD-STILSON CO. ANDERSON IND.							
DATE	NAME	AMOUNT PAID	DUES	FEES	OTHER SOURCES	TOTAL	

Left Hand Page of 604DA

Cash Paid to Treasurer			Orders Drawn			
THE WARD-STILSON CO. ANDERSON IND.						
Date	Name of Treasurer	Amount	Date	No.	For Whom Drawn	Amount

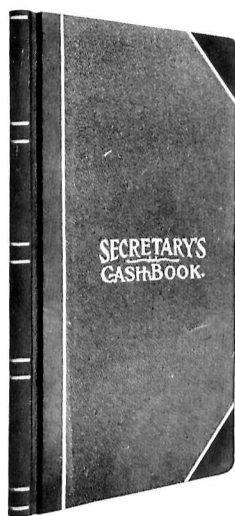
Right Hand Page of 604DA

RULED AND PRINTED BOOKS

604DA—Secretary's Cash Book, 100 pages, 8½x11 inches, printed headings, special ruled form, high-grade paper, not paged, bound in red Russia leather at back

and corners, corners rounded, black pebbled cloth sides, title "Secretary's Cash Book" embossed on front cover in gold.

Weight, 2 pounds.



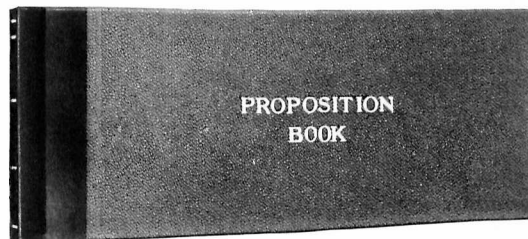
Cover of 605DA

PLAIN RULED

605DA—Secretary's Cash Book, 200 pages, 8¾ x 14 inches, plain ruled and paged, good grade of paper, black pebbled cloth sides, red leather back and corners, rolled in gold, corners of cover rounded, title "Secretary's Cash Book" embossed on front cover.

Weight, 4 pounds.

PROPOSITION FOR MEMBERSHIP BOOK



606DA

606DA—Proposition for Membership, 100 leaves, well bound, black pebbled cloth sides, black Morocco back, special form, adapted for the Daughters of America. Weight, 2 pounds.

TO THE SECRETARY

Pages 14 to 23 are devoted exclusively to supplies for the Secretary's use. Special ruled books—Plain ruled books. Special printed blanks—Regular form blanks.

Postal Cards—Statement Cards—Emblematic Stationery. Parliamentary rules.

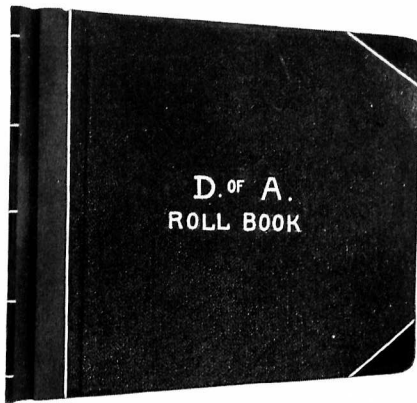
Everything is listed in this section for the convenience of the Secretary.

You will notice that under each book and blank we give the weight. This will aid you to determine the amount of postage necessary for mailing.

Our books and blanks are made up strictly in accordance with our regulations and will lighten the labor of any Secretary.

PRICE LIST ON INSIDE FRONT COVER

Miscellaneous Books



607DA
Cover of Roll Book

Roll of Officers of _____ Council No. _____ D. of A.	
For the Term Beginning _____ and Ending _____	
NAME	
J. P. C.	
A. J. P. C.	
Comptroller	
A. Collector	
V. Collector	
A. V. Council	
Pres. Sec'y	
A. R. Sec'y	
Fin. Sec'y	
Treasurer	
Conductor	
Master	
Ch. Secretary	
Ch. Treasurer	
Trustee	
Trustee	
Trustee	
Exp. on S. C.	
Alternate	

607DA
Page from Roll Book

OFFICERS' AND MEMBERS' ROLL BOOK

607DA—Officers' and Members' Roll Book, special ruled form, size 8¼ x 8 inches, 100 pages, printed headings, ruled, back and corners bound in half Russia, rolled in gold, black pebbled cloth sides, corners of cover rounded, title "D. of A. Roll Book" gold embossed on front cover. Weight, 2 pounds.

RECEIPT CASES



608DA to 610DA

These cases are made size of 3x4½ inches. Very convenient for preserving the receipt and easily carried.

They fold together in center the long way of case.

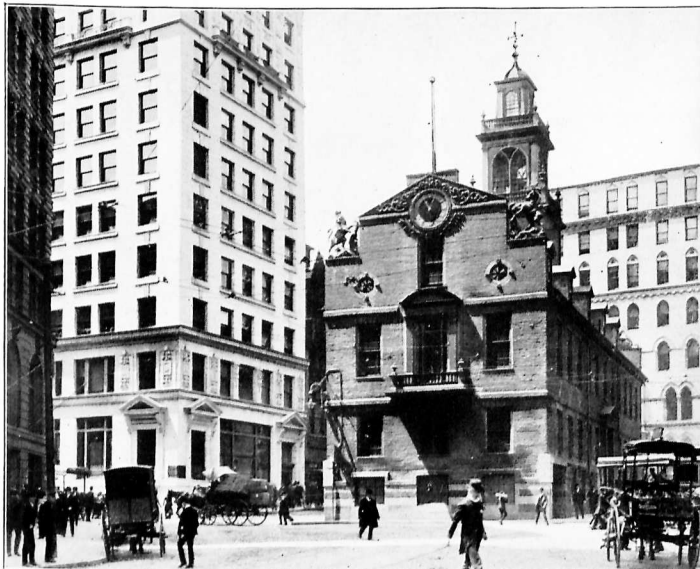
Receipt Case, seal grain leather, lined, with the lettering "D. of A." gold embossed on outside.

- 608DA—1 Case
- 609DA—2 to 12
- 610DA—13 to 25

Receipt Case, seal grain leather, lined, with Name, Number and Location of Council gold embossed on one fold and "D. of A." on the other.

- 611DA—1 Case
- 612DA—2 to 12
- 613DA—13 to 25

PRICE LIST ON INSIDE FRONT COVER



"The Old State House Today"

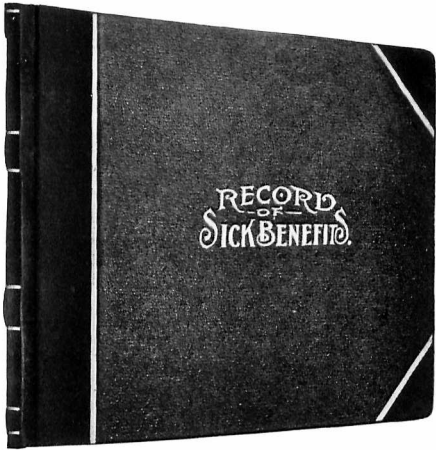
"THE OLD STATE HOUSE"

Directly in front of the eastern end of the building the "Boston Massacre" took place, March 5th, 1770. Due to the presence of troops in the city frequent quarrels occurred; the crisis came in a disturbance which took place in State Street in front of what was then the Custom House, but later called the old State House.

"Here", says John Adams, "Independence was born". It is now a museum and contains two thousand or more historic objects of great interest and value.

There are many of these old buildings throughout our land, and all true Americans should be gratified to know that they are being kept as near their original state as possible and will be handed down for the coming generations.

Miscellaneous Books



Cover of 614DA

Hall of		DATES AND AMOUNTS OF PAYMENTS OF																
NAMES	Date Sickness Com-menced	BENEFITS												NURSE HIRE		REMARKS		
		Date Paid	Am't	Date Paid to	Date Paid	Am't	Date Paid to	Date Paid	Am't	Date Paid to	Date Paid	Am't	Date Paid to	Date Paid	Am't			

Left Hand Page of 614DA

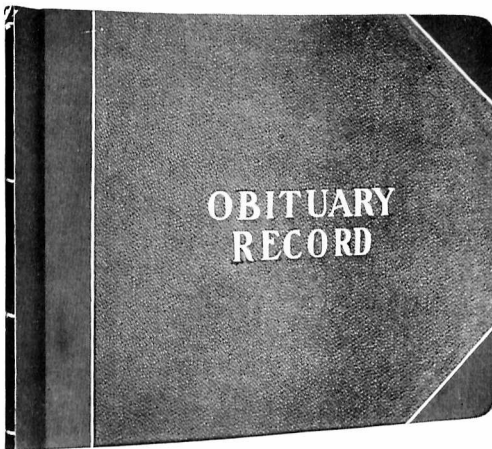
BENEFITS										NURSE HIRE				REMARKS
Date Paid	Am't	Date Paid to	Date Paid	Am't	Date Paid	Sickness Ended	No. Weeks Sick	Amount Benefits Paid	Com-mence-ment	Ended	No. Days	Rate	Amount Paid	

Right Hand Page of 614DA

614DA—Record of Sick Benefits. Special ruled form, furnishing detailed record as to Date of Payments, Amounts of Benefits, Nurse Hire, etc., 72 pages, 8½ x 11 inches, printed headings, ruled, with back and

corners of book bound in half Russia, gold rolled, black pebbled cloth sides, corners of cover rounded, title "Record of Sick Benefits" gold embossed on front cover.

Weight, 2 pounds.



Cover of Obituary Record

OBITUARY RECORD						
NAME OF DECEASED	DATE DIED	CEMETERY		GRAVE		REMARKS
		NAME OF	LOCATION OF	LOCATION OF	NO.	

Form of Obituary Record

OBITUARY RECORD

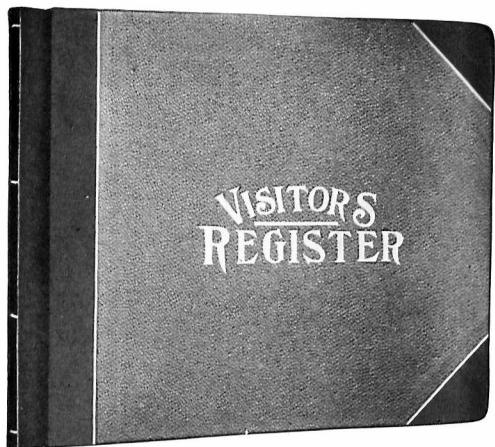
This book is designed primarily for the purpose of keeping a correct record of deceased members. It contains the name, date of death, location of cemetery and grave, and a column for remarks. Committees have experienced so much trouble in locating graves after a few years that no Council should be without a record of this kind.

615DA—Obituary Record, 8½ x 11 inches, printed headings, good quality book paper, ruled, back and corners bound in half Russia, round corners, rolled in gold, black pebbled cloth sides, corners of cover rounded, title "Obituary Record" gold embossed on front cover.

Weight, 2 pounds.

PRICE LIST ON INSIDE FRONT COVER

Miscellaneous Books



Cover of Visitors' Register

Visitors' Register

of _____ No. _____

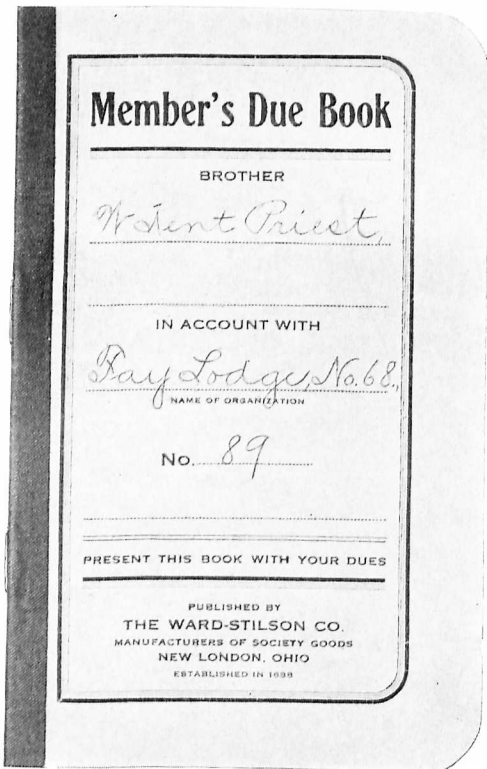
DATE OF VISIT	NAME OF VISITOR	MEMBER OF	No.	LOCATED AT	STATE	REMARKS

Form of Visitors' Register
VISITORS' REGISTER

It is desirable to have a record of all visitors attending your Council. It is valuable to you and leaves the impression that you are not only conducting your Council in a businesslike way, but that you appreciate their attendance.

616DA—Visitors' Register, size 8½ x 11 inches, 100 pages, ruled, printed headings, showing name of visitor, date of visit, name, number and location of Council. Accommodates 1,500 names, is well bound, black pebbled cloth sides, Russia leather back and corners, rolled in gold, title "Visitors' Register" gold embossed on front cover.

Weight, 2 pounds.



Due Book Cover
617DA to 622DA

19 _____	AM'T DUE	AM'T PAID	DATE PAID	RECEIVED PAYMENT
AM'T FOR'D				
July				
"				
"				
"				
Aug.				
"				
"				
Sept.				
"				
"				
"				
BALANCE				
MISCELLANEOUS		CHARGES		
BALANCE				

Page From Due Book

MEMBER'S DUE BOOKS
With Name and Number of Council Printed on Cover

- 617DA— 25 Books
- 618DA— 50 Books
- 619DA— 75 Books
- 620DA—100 Books
- 621DA—150 Books
- 622DA—200 Books

Without Name and Number of Council on Cover

- 623DA— 25 Books
- 624DA— 50 Books

- 625DA— 75 Books
- 626DA—100 Books
- 627DA—150 Books
- 628DA—200 Books

WEIGHTS AS FOLLOWS:

- 25 Books 1 Lb.
- 50 Books 2 Lbs.
- 75 Books 3 Lbs.
- 100 Books 4 Lbs.
- 150 Books 6 Lbs.
- 200 Books 8 Lbs.

PRICE LIST ON INSIDE FRONT COVER

Council Cards

White Lily Council, No. 81, D. of A.																																																																																	
Portsmouth, Ohio, _____ 19__																																																																																	
Dear _____																																																																																	
There will be a meeting of this Council as indicated in the margin. Please attend.																																																																																	
By order of the Council.																																																																																	
R. S. _____																																																																																	
Regular { at _____ M.																																																																																	
Special { _____																																																																																	
The Ward-Stilson Co., Anderson, Ind.																																																																																	
<table border="1" style="width: 100%; border-collapse: collapse;"> <thead> <tr> <th colspan="2">MONDAY</th> <th colspan="2">TUESDAY</th> <th colspan="2">WEDNESDAY</th> <th colspan="2">THURSDAY</th> <th colspan="2">FRIDAY</th> <th colspan="2">SATURDAY</th> <th colspan="2">SUNDAY</th> </tr> <tr> <th>Jan.</th><th>Feb.</th><th>Mar.</th><th>Apr.</th><th>May</th><th>June</th><th>July</th><th>Aug.</th><th>Sept.</th><th>Oct.</th><th>Nov.</th><th>Dec.</th><th></th><th></th> </tr> </thead> <tbody> <tr> <td>1</td><td>2</td><td>3</td><td>4</td><td>5</td><td>6</td><td>7</td><td>8</td><td>9</td><td>10</td><td>11</td><td>12</td><td>13</td><td>14</td> </tr> <tr> <td>15</td><td>16</td><td>17</td><td>18</td><td>19</td><td>20</td><td>21</td><td>22</td><td>23</td><td>24</td><td>25</td><td>26</td><td>27</td><td>28</td> </tr> <tr> <td>29</td><td>30</td><td>31</td><td></td><td></td><td></td><td></td><td></td><td></td><td></td><td></td><td></td><td></td><td></td> </tr> </tbody> </table>												MONDAY		TUESDAY		WEDNESDAY		THURSDAY		FRIDAY		SATURDAY		SUNDAY		Jan.	Feb.	Mar.	Apr.	May	June	July	Aug.	Sept.	Oct.	Nov.	Dec.			1	2	3	4	5	6	7	8	9	10	11	12	13	14	15	16	17	18	19	20	21	22	23	24	25	26	27	28	29	30	31											
MONDAY		TUESDAY		WEDNESDAY		THURSDAY		FRIDAY		SATURDAY		SUNDAY																																																																					
Jan.	Feb.	Mar.	Apr.	May	June	July	Aug.	Sept.	Oct.	Nov.	Dec.																																																																						
1	2	3	4	5	6	7	8	9	10	11	12	13	14																																																																				
15	16	17	18	19	20	21	22	23	24	25	26	27	28																																																																				
29	30	31																																																																															

Form of Notification Post Card 629DA to 632DA

NOTIFICATION POST CARDS

They are inexpensive and afford a quick and convenient way of notifying members of any meeting. Many Councils are now using them to notify members of the stated meetings. One of these cards received the same day of the stated or special meeting night not only reminds but interests the members and secures a larger attendance. This keeps up enthusiasm and consequently builds up the Council.

- 629DA— 250 Post Cards
- 630DA— 500 Post Cards
- 631DA—1000 Post Cards
- 632DA—2000 Post Cards

VISITORS' POST CARD

This card we are publishing to meet the demand of Secretaries, who are so much interested in the success of their own Council and their sister Councils, as well as the members thereof, that they use this means of notifying another Council that one of its members has visited them and has received a cordial and fraternal welcome. Sister Secretary, order a quantity of these for the fraternal results accomplished.

- 633DA— 250 Post Cards
- 634DA— 500 Post Cards
- 635DA—1000 Post Cards
- 636DA—2000 Post Cards

Hall of Charity Council, No. 6, D. of A.	
Greensboro, N. C. _____ 19__	
To the Officers and Members of _____ Council, No. _____	
Dear _____ We take pleasure in notifying you that _____ of your Council, paid us a visit on the evening of _____ and we extended to _____ a cordial and fraternal welcome. We are always pleased to meet members from other Councils and endeavor to show them the courtesies of the Order during their stay in our city.	
Yours in L. L. and P.	
_____ Secretary	
The Ward-Stilson Co., Anderson, Ind.	

Form of Visitors' Post Card 633DA to 636DA

STATEMENT CARDS

These valuable cards are of so much assistance to the Secretary furnishing members a statement of their account with the Council, and the result secured so beneficial, that many Secretaries are making it a part of their duty to send the cards out periodically.

- With Name, Number and Location of Council Printed In.
- 637DA— 250 Cards
 - 638DA— 500 Cards
 - 639DA—1000 Cards
 - 640DA—2000 Cards
- Without Name, Number and Location of Council Printed In.
- 641DA— 250 Cards
 - 642DA— 500 Cards
 - 643DA—1000 Cards
 - 644DA—2000 Cards

WEIGHTS OF CARDS AS FOLLOWS:

- 250 Cards.....2 lbs.
- 500 Cards.....4 lbs.
- 1000 Cards..... 7 lbs.
- 2000 Cards.....14 lbs.

_____ Council, No. _____, D. of A.			
Statement of the account of _____			
for the Quarter ending _____ 19__			
DEBIT		CREDIT	
Due Council at End of Last Quarter.		Overpaid at End of Last Quarter	
Dues for Quarter		Paid during Quarter	
Miscellaneous		Total Credits	
Total Debits		Dues and Miscellaneous for quarter	
Less Total Credits		Amount Overpaid at Date	
Amount Due Council at Date			
FINANCIAL SECRETARY			
According to the Constitution, any member allowing himself to become _____ weeks in arrears for weekly dues, will not be entitled to benefits until all such arrearages (over _____ weeks) are paid in full			
THE WARD-STILSON CO. ANDERSON, IND.			

Form of 641DA to 644DA

PRICE LIST ON INSIDE FRONT COVER

Blanks

Form of 645DA — 646DA

Our blanks are furnished with or without Name, Number and Location of Council.

The printed headings have Name, Number and Location of Council printed in, which adds to their appearance materially, also saving the Secretary this amount of extra work.

Those without printed headings have blank spaces for Secretary to fill in the Name, Number and Location of the Council.

NOTICE OF ARREARAGE

Without Printed Headings

645DA—Notice of Arrearage, in pads of 100, 5½x8½ inches, good quality white paper, neatly printed and padded. Weight, 1 pound.

646DA—Notice of Arrearage, the same as 645DA, but in pads of 200 leaves. Weight, 2 pounds.

With Printed Headings

647DA—Notice of Arrearage, same as 645DA, except has Name, Number and Location of Council. Weight, 1 pound.

648DA—Notice of Arrearage, like 645DA, except has Name, Number and Location of Council printed in, and put up in pads of 200. Weight, 2 pounds.

NOTICE OF ELECTION

Without Printed Headings

649DA—Notice of Election, in pads of 100, 5½x8½ inches, good quality white paper, neatly printed and padded. Weight, 1 pound.

With Printed Headings

650DA—Notice of Election, same as 649DA, but has Name, Number and Location of Council. Weight, 1 pound.

NOTICE OF SUSPENSION

Without Printed Headings

651DA—Notice of Suspension, in pads of 100, 5½x8½ inches, good quality white paper, neatly printed and padded. Weight, 1 pound.

With Printed Headings

652DA—Notice of Suspension, same as 651DA, except has Name, Number and Location of Council. Weight, 1 pound.

Form of 653DA

ORDERS ON TREASURER

Our Warrants and Receipts are printed on a good quality of check paper, regular check binding and perforated stub. Printed in one color with neat D. of A. emblem.

653DA—Orders on Treasurer, one order on a page, 100 per book.

Weight, 1 pound.

TREASURER'S RECEIPT TO SECRETARY

These are printed and bound in the same manner as the Orders on Treasurer 653DA.

654DA—Treasurer's Receipt to Secretary, one receipt on a page, 100 per book.

Weight, 1 pound.

PRICE LIST ON INSIDE FRONT COVER

D. of A. Emblematic Stationery

MEETS THURSDAY NIGHTS



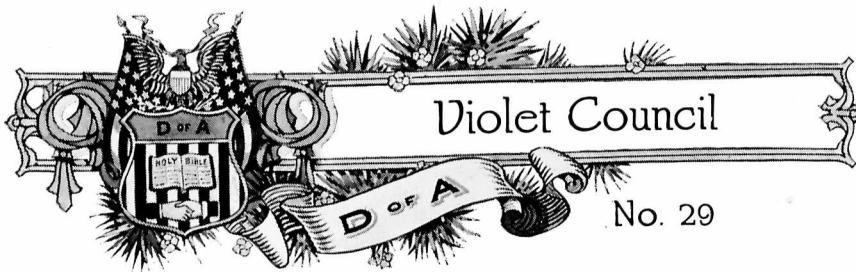
Betsy Ross Council

No. 21

Camden, N. J.

19

655DA to 657DA
Letter Heads—Weights Below



Violet Council

No. 29

Springfield, Ohio,

19

658DA to 660DA
Note Heads—Weights Below

QUALITY

We use a high grade of writing paper, ruled on both sides (unless you desire it unruled, when we use a bond paper, if for typewriter) and put up in pads of 100 sheets each.

After Five Days Return to Secretary of
ARLINGTON COUNCIL



No. 68

ARLINGTON, MD.

661DA to 663DA
Envelopes—Weights Below

IMPORTANT

It is important that you give us the exact matter you wish printed on Letter Heads, Note Heads and Envelopes. Write it very plainly. The Name of your Secretary, Number and Location of Council, as well as night of meeting, printed at no additional expense.

LETTER HEADS
Size 8½ x 11

No.	Quantity
655DA.....	250
656DA.....	500
657DA.....	1000

NOTE HEADS
Size 6 x 9½

No.	Quantity
658DA.....	250
659DA.....	500
660DA.....	1000

ENVELOPES
Size 6½ XXX

No.	Quantity
661DA.....	250
662DA.....	500
663DA.....	1000

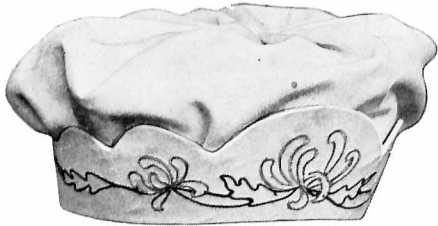
WEIGHTS OF STATIONERY

When packed for shipment stationery will weigh:

Quantity	Letter Heads	Note Heads	Envelopes
250	4 Lbs.	3 Lbs.	3 Lbs.
500	8 Lbs.	5 Lbs.	6 Lbs.
1000	14 Lbs.	8 Lbs.	11 Lbs.

PRICE LIST ON INSIDE FRONT COVER

Headdresses



664DA to 669DA



676DA to 681DA



689DA to 693DA



670DA to 675DA



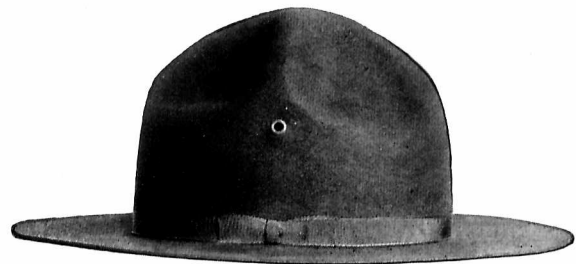
688DA



694DA to 699DA



682DA to 687DA



700DA

Headdress, turban style, puffed top, neat embroidered design worked in pure silks.

- | | |
|------------------|-----------------------|
| 664DA—Poplin | 667DA—Satin |
| 665DA—Raynette | 668DA—Grosgrain silk |
| 666DA—Silk serge | 669DA—Skinner's satin |

Headdress, turban style, trimmed with gold metal lace, and on front three raised gold bullion stars.

- | | |
|------------------|-----------------------|
| 670DA—Poplin | 673DA—Satin |
| 671DA—Raynette | 674DA—Grosgrain silk |
| 672DA—Silk serge | 675DA—Skinner's satin |

Headdress, a popular style of turban with border and design in silk embroidery.

- | | |
|------------------|-----------------------|
| 676DA—Poplin | 679DA—Satin |
| 677DA—Raynette | 680DA—Grosgrain silk |
| 678DA—Silk serge | 681DA—Skinner's satin |

Headdress, Seminary style, long silk tassel, substantial board frame.

- | | |
|------------------|-----------------------|
| 682DA—Poplin | 685DA—Satin |
| 683DA—Raynette | 686DA—Grosgrain silk |
| 684DA—Silk serge | 687DA—Skinner's satin |

688DA—Cap, style of new Army regulation, dark blue cloth, black leather visor and cap strap, gilt side buttons. Crossed rifles in gilt on front.

Hat, Colonial style, trimmed with band of color, and red, white and blue rosette.

- | | |
|----------------|----------------------------|
| 689DA—Cambric | 692DA—Silk finished velvet |
| 690DA—Poplin | 693DA—Satin |
| 691DA—Raynette | |

Headdress, turban style, attractive design on front embroidered in silk, silk embroidered edge. Crown has puffed top.

- | | |
|------------------|-----------------------|
| 694DA—Poplin | 697DA—Satin |
| 695DA—Raynette | 698DA—Grosgrain silk |
| 696DA—Silk serge | 699DA—Skinner's satin |

700DA—Hat, U. S. Army, Service, Montana peak, fine quality felt, eyelets and hat cord, silk hat band.

PRICE LIST ON INSIDE FRONT COVER

Officers' Costumes



Fig. 1

Robe, plain with large flowing sleeves, yoke lined and interlined, robe adjustable in length, with expansion shoulders, being the seminary style.

- 701DA—Percale
- 702DA—Mercerized sateen
- 703DA—Poplin
- 704DA—Raynette
- 705DA—Satin serge
- 706DA—Heavy satin

Line of Headdresses Listed on Page 24



Fig. 2

Robe, with neat silk embroidered design, two rows down the front, around the sleeves, yoke and collar. Yoke is lined and interlined. Robe is seminary style, adjustable in length, making it suitable for either large or small, or tall or short people.

- 707DA—Mercerized sateen
- 708DA—Poplin
- 709DA—Raynette
- 710DA—Satin serge
- 711DA—Heavy satin
- 712DA—Silk poplin
- 713DA—Guaranteed Skinner's satin

Robes are made up and trimmed in the colors of the Order



Fig. 3

Robe, made in the following materials, large flowing sleeves, neat embroidered design down front, on the sleeves, yoke and collar. Seminary style, and adjustable length, making it adaptable to any sized person.

- 714DA—Mercerized sateen
- 715DA—Poplin
- 716DA—Raynette
- 717DA—Satin serge
- 718DA—Heavy satin
- 719DA—Silk poplin
- 720DA—Guaranteed Skinner's satin

Special Line of Headdresses on Page 24

PRICE LIST ON INSIDE FRONT COVER

Officers' Costumes



Fig. 4

The robe has a sash of contrasting color to body of garment, trimmed across ends with gold fringe. Fancy yoke and standing collar, the yoke, collar, cuffs and front trimmed with gold open work lace. Turban style of headdress, trimmed on edges to harmonize with robe.

ROBE AND HEADDRESS

- 721DA—Mercerized sateen
- 722DA—Poplin
- 723DA—Raynette
- 724DA—Satin serge
- 725DA—Heavy satin
- 726DA—Silk poplin
- 727DA—Guaranteed Skinner's satin



Fig. 5

A well appearing costume consisting of long, plain robe with collar, the bands extending over shoulders to waist are pleated both front and back, and with the neat waist sash are of contrasting color to body of garment, the sash is trimmed on ends with large tassels. The headdress has long back curtain drape, the ornamental pleated bands made to match shoulder bands, the crown of headdress has a rather full puffed crown.

ROBE AND HEADDRESS

- 728DA—Mercerized sateen
- 729DA—Poplin
- 730DA—Raynette
- 731DA—Satin serge
- 732DA—Heavy satin
- 733DA—Silk poplin
- 734DA—Guaranteed Skinner's satin



Fig. 6

A neat costume design with the pattern on yoke, cuffs and up and down the front of robe neatly applied in three-cord silk embroidery. The square yoke and semi-flowing sleeves make this robe of pleasing appearance.

ROBE

- 735DA—Poplin
- 736DA—Raynette
- 737DA—Satin serge
- 738DA—Heavy satin
- 739DA—Silk poplin
- 740DA—Guaranteed Skinner's satin

PRICE LIST ON INSIDE FRONT COVER

Officers' Costumes



Fig. 7

A pleasing costume consisting of under-robe, over-robe and headdress. The under-robe is full length with a neat touch of silk embroidery at the neck, the over-robe is in contrasting color to robe and bordered with a wide satin band which is also of contrasting color. The sleeves are banded to harmonize. Neat waist sash trimmed on ends with silk tassels. The headdress has puffed crown, back curtain drape and band on front ornamented in silk embroidery.

ROBE, OVER-ROBE AND HEADDRESS

- 741DA—Mercerized sateen
- 742DA—Poplin
- 743DA—Raynette
- 744DA—Satin serge
- 745DA—Heavy satin
- 746DA—Silk poplin
- 747DA—Guaranteed Skinner's satin



Fig. 8

SPECIAL OFFICER'S DRAPE IN COLORS

Drape is lined and the trimmings are of fine gilt lace and gold bullion fringe with a handsome hand embroidered gold bullion sunburst on breast. The many expressions of satisfaction from various Councils prove the popularity of this drape.

DRAPE ONLY

- 748DA—Mercerized sateen
- 749DA—Poplin
- 750DA—Raynette
- 751DA—Satin serge
- 752DA—Heavy satin
- 753DA—Silk poplin
- 754DA—Guaranteed Skinner's satin



Fig. 9

The drape hangs gracefully from the shoulders, is artistically gathered and decorated around edges and on front in a neat three-cord embroidery design, the robe proper is plain except for the three-cord embroidery on full sleeves to match drape, made girdle with tassels to tie at waist. Headdress has full puffed top, the band is ornamented in the three-cord embroidery and set with colored jewels, full curtain drape at back.

ROBE, DRAPE AND HEADDRESS

- 755DA—Mercerized sateen
- 756DA—Poplin
- 757DA—Raynette
- 758DA—Satin serge
- 759DA—Heavy satin
- 760DA—Silk poplin
- 761DA—Guaranteed Skinner's satin

PRICE LIST ON INSIDE FRONT COVER

Costumes



Fig. 10



Fig. 11



Fig. 12

Uncle Sam and Goddess of Liberty

762DA—Uncle Sam's Costume, coat of blue percaline, combination vest of red, white and blue bunting, trousers of red and white striped goods and hat trimmed like vest.

763DA—Uncle Sam's Costume, coat of blue raynette, combination vest of same material as coat with white sewed stars, trousers of red, white and blue striped goods and hat trimmed like vest.

764DA—Uncle Sam's Costume, coat of blue bunting with white stars, combination vest of blue percaline, trousers of red and white striped material, hat trimmed to correspond with coat.

765DA—Uncle Sam's Costume, coat of blue raynette, with sewed stars, combination vest of blue raynette, trousers of red and white striped material, hat trimmed like coat.

766DA—Goddess of Liberty Costume, consisting of white poplin robe trimmed with blue panel, sewed stars, white yoke with sewed red stripes, Regular shaped Liberty headdress with silk embroidered band.

767DA—Goddess of Liberty Costume, consisting of white raynette robe, trimmed with blue panel, sewed stars, white yoke with sewed red stripes, Regular shaped Liberty headdress with silk embroidered band.

PRICE LIST ON INSIDE FRONT COVER

Costumes



Fig. 13

768DA—Goddess of Liberty Costume, consisting of white sateen tunic with sewed red stripes, blue yoke of poplin with sewed stars, under-robe and cape of white poplin. Regular Liberty headdress ornamented with silk embroidered stars. White girdle with tassels.

769DA—Goddess of Liberty Costume, consisting of white sateen tunic with sewed red stripes, blue yoke of raynette with sewed stars, under-robe and cape of blue raynette. Regular Liberty headdress ornamented with silk embroidered stars. White girdle with tassels.



Fig. 14

Another plain costume designed to wear over the dress, very popular with Councils. The robe is neat in design, with a waist sash of any desired color. Headdress is not included.

ROBE AND SASH

- 770DA—Percaline
- 771DA—Mercerized sateen
- 772DA—Poplin
- 773DA—Raynette
- 774DA—Satin serge
- 775DA—Heavy satin



Fig. 15

Plain robe with flowing sleeves with a full sash of red, white and blue. The robe is full enough to be worn over the dress. Headdress has puffed crown with gold spangled stars on front.

ROBE, SASH AND HEADDRESS

- 776DA—Percaline
- 777DA—Mercerized sateen
- 778DA—Poplin
- 779DA—Raynette
- 780DA—Satin serge
- 781DA—Heavy satin

PRICE LIST ON INSIDE FRONT COVER

The "Colonial" Popular Priced Officers' Outfit



Jr. P. C.



Asst. Jr. P. C.



Councilor



Asst. Councilor



Vice Councilor



Asst. Vice Councilor



Conductor



Warden



Inside Sentinel



Outside Sentinel

CHARACTERS	Detailed Description on Page	OUTFIT No. 782DA		OUTFIT No. 783DA		OUTFIT No. 784DA	
		No.	Material	No.	Material	No.	Material
1 Jr. Past Councilor Robe.....	26		Sateen	735DA	Poplin	736DA	Raynette
1 Assistant Jr. P. C. Robe.....	25	714DA	Sateen	715DA	Poplin	715DA	Poplin
1 Councilor Robe	26		Sateen	735DA	Poplin	736DA	Raynette
1 Asst. Councilor Robe	25	707DA	Sateen	708DA	Poplin	708DA	Poplin
1 V. C. Robe and Headdress.....	26	721DA	Sateen	722DA	Poplin	723DA	Raynette
1 Asst. V. C. Robe.....	25	707DA	Sateen	708DA	Poplin	708DA	Poplin
1 Conductor Robe, Sash and Headdress	29	777DA	Sateen	778DA	Poplin	778DA	Poplin
1 Warden Robe and Sash.....	29	771DA	Sateen	772DA	Poplin	772DA	Poplin
1 Inside Sentinel Robe	25	701DA	Percaline	702DA	Sateen	703DA	Poplin
1 Outside Sentinel Robe	25	701DA	Percaline	702DA	Sateen	703DA	Poplin

PRICE LIST ON INSIDE FRONT COVER

The "Standard" High-grade Medium Priced Officers' Outfit



Jr. Past Councilor



Asst. Jr. P. C.



Councilor



Asst. Councilor



Vice Councilor



Asst. Vice Councilor



Conductor



Warden



Inside Sentinel



Outside Sentinel

CHARACTERS	Detailed Description on Page	OUTFIT No. 785DA		OUTFIT No. 786DA		OUTFIT No. 787DA	
		No.	Material	No.	Material	No.	Material
1 Jr. Past Councilor Draper.....	27	749DA	Poplin	750DA	Raynette	751DA	Satin serge
1 Asst. Jr. P. C. Robe, Draper and Headress	27	755DA	Sateen	756DA	Poplin	758DA	Satin serge
1 Councilor Draper	27	749DA	Poplin	750DA	Raynette	751DA	Satin serge
1 Assistant Councilor Robe, Draper and Headress	27	755DA	Sateen	756DA	Poplin	758DA	Satin serge
1 Vice Councilor Draper	27	749DA	Poplin	750DA	Raynette	751DA	Satin serge
1 Asst. Vice Councilor Robe, Draper and Headress	27	755DA	Sateen	756DA	Poplin	758DA	Satin serge
1 Conductor Robe and Headress....	27	741DA	Sateen	742DA	Poplin	743DA	Raynette
1 Warden Robe and Headress.....	27	741DA	Sateen	742DA	Poplin	743DA	Raynette
1 Inside Sentinel Robe & Headress..	26	728DA	Sateen	728DA	Sateen	729DA	Poplin
1 Outside Sen. Robe and Headress..	26	728DA	Sateen	728DA	Sateen	729DA	Poplin

PRICE LIST ON INSIDE FRONT COVER

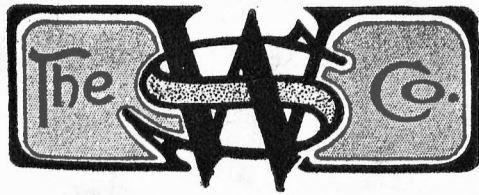
Index

A		G		P	
	Page		Page		Page
American Flags	6	Gavels	10	Parade Banners	7
B		Gavel Blocks	10	Plain Ruled Ledgers.....	16
Badges, Reversible	4-5	Globes, Hall Lantern.....	12	Plain Ruled Minute Books.....	16
Ballots	10	Goddess of Liberty Costumes..	28-29	Post Cards	21
Ballot Boxes	10	H		Post Card Punches.....	13
Banners	7	Hall Lanterns	12	Proposition for Membership	
Banner Belts	7	Hall Lantern Globes.....	12	Book	17
Banner Covers	7	Headdresses	24	Q	
Banner and Flag Stands.....	7	Hoodwinks	10	Quaker Muskets	8
Beard, Uncle Sam's.....	8	I		R	
Belts	9	Interchangeable Slides	12	Receipt Cases	18
Bibles	11	Ivory Presentation Gavels.....	10	Record of Sick Benefits.....	19
Blanks	22	J		Reflectors, Tableau	9
Blocks, Gavel	10	Jewelry	3	Reversible Badges	4-5
Blotter Minute Leaves.....	14	L		Ritual Cases	13
Books and Blanks.....	14 to 23	Lanterns, Hall	12	Robert's Rules of Order.....	14
C		Ledgers	15-16	Roll of Membership.....	18
Captain's Call	7	Letter Heads	23	Rosettes, Funeral	11
Case, Receipt	18	M		S	
Case, Ritual	13	Members' Collars	3	School House	8
Cash Books, Secretary's.....	17	Members' Due Books.....	20	Seals	13
Cash Books, Treasurer's.....	16	Members' Roll Book.....	18	Secretary's Cash Book.....	17
Charter Drapes	11	Minute Books.....	14-16	Slides, Interchangeable.....	12
Collars	3	Muskets, Quaker	8	Stands, Flag and Banner.....	7
Combined Minute and Officers'		N		Statement Cards	21
Roll Book	14	National Council Supplies.....	1	Stationery, Emblematic.....	23
Costumes	25 to 29	Note Heads	23	Swords	9
Cushing's Practice	14	Notice of Arrearage.....	22	Sword Belts	9
D		Notice of Election.....	22	T	
Due Books, Members'.....	20	Notice of Suspension.....	22	Tableau Reflectors.....	9
E		Notification Post Cards.....	21	Terms and Conditions.....	2
Emblematic Stationery.....	23	O		Treasurer's Cash Book.....	16
Envelopes	23	Obituary Record	19	Treasurer's Receipt to Sec'y..	22
F		Officers' Collars	3	U	
Fire Cones	9	Officers' Costumes	25 to 27	Uncle Sam's Costume.....	28
Flags, American	6	Officers' Roll Book.....	18	Uncle Sam's Beard.....	8
Flag and Banner Stands.....	7	Orders on Treasurer.....	22	Uncle Sam's Wig.....	8
Flag Belts	6	Outfits	30-31	U. S. Tactics.....	14
Flag Covers	6	P		V	
Flashers	12	Parade Banners	7	Visitors' Post Cards.....	21
Funeral Drapes	7	Plain Ruled Ledgers.....	16	Visitors' Register	20
Funeral Rosettes	11	Plain Ruled Minute Books.....	16	W	
		Post Cards	21	Wig, Uncle Sam's.....	8
		Post Card Punches.....	13		
		Proposition for Membership			
		Book	17		
		Q			
		Quaker Muskets	8		
		R			
		Receipt Cases	18		
		Record of Sick Benefits.....	19		
		Reflectors, Tableau	9		
		Reversible Badges	4-5		
		Ritual Cases	13		
		Robert's Rules of Order.....	14		
		Roll of Membership.....	18		
		Rosettes, Funeral	11		
		S			
		School House	8		
		Seals	13		
		Secretary's Cash Book.....	17		
		Slides, Interchangeable.....	12		
		Stands, Flag and Banner.....	7		
		Statement Cards	21		
		Stationery, Emblematic.....	23		
		Swords	9		
		Sword Belts	9		
		T			
		Tableau Reflectors.....	9		
		Terms and Conditions.....	2		
		Treasurer's Cash Book.....	16		
		Treasurer's Receipt to Sec'y..	22		
		U			
		Uncle Sam's Costume.....	28		
		Uncle Sam's Beard.....	8		
		Uncle Sam's Wig.....	8		
		U. S. Tactics.....	14		
		V			
		Visitors' Post Cards.....	21		
		Visitors' Register	20		
		W			
		Wig, Uncle Sam's.....	8		

Price List No. 12

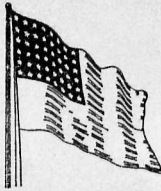
DAUGHTERS OF AMERICA

Costumes and Supplies



Price List No. 12

DAUGHTERS OF AMERICA
Costumes and Supplies



THE WARD-STILSON COMPANY
ANDERSON, INDIANA

Daughters of America Costumes and Supplies

PRICE LIST— No. 12

Herein can be found the price of each and every
article listed in Catalogue No. 12.

DISCOUNT -- No. 12

All prices in this list are
subject to a discount of

30%

Owing to the uncertain market conditions we
cannot guarantee the above discount for any
definite period. We suggest that you place your
order now and take advantage of this liberal
discount.

THE WARD-STILSON COMPANY
ANDERSON, INDIANA

The Ward-Stilson Co., Anderson, Ind.

Page 3.

400DA Collars, dozen	\$36.00
401DA Collars, dozen	37.25
402DA Collars, dozen	38.85
403DA Collars, dozen	40.15
404DA Collars, dozen	47.35
405DA Collars, dozen	47.70
406DA Collars, set of twelve	78.60
407DA Collars, set of twelve	79.90
408DA Collars, set of twelve	81.55
409DA Collars, set of twelve	89.10
410DA Collars, set of twelve	84.95
411DA Collars, set of twelve	109.40
412DA Brooch, each	3.00
413DA Brooch, each	6.40
414DA Pin, each	1.50
415DA Pin, each	4.80
416DA Pin, each	3.15
417DA Pin, each	6.55
418DA Ring, each	9.00
419DA Pin, each	1.90
420DA Pin, each	6.10

Page 4.

421DA Badges, 12 or more, each	\$ 1.20
422DA Badges, 25 or more, each	1.16
423DA Badges, 50 or more, each	1.13
424DA Badges, 75 or more, each	1.11
425DA Badges, 100 or more, each	1.10
426DA Badges, 150 or more, each	1.08
427DA Badges, 12 or more, each	1.50
428DA Badges, 25 or more, each	1.44

429DA Badges, 50 or more, each	1.41
430DA Badges, 75 or more, each	1.40
431DA Badges, 100 or more, each	1.38
432DA Badges, 150 or more, each	1.37

Page 5.

433DA Badges, 12 or more, each	\$ 1.46
434DA Badges, 25 or more, each	1.43
435DA Badges, 50 or more, each	1.40
436DA Badges, 75 or more, each	1.38
437DA Badges, 100 or more, each	1.37
438DA Badges, 150 or more, each	1.35
439DA Badges, 12 or more, each	2.19
440DA Badges, 25 or more, each	2.10
441DA Badges, 50 or more, each	2.07
442DA Badges, 75 or more, each	2.06
443DA Badges, 100 or more, each	2.04
444DA Badges, 150 or more, each	2.03

Page 6

445DA Flag, each	\$ 6.30
446DA Flag, each	7.35
447DA Flag, each	9.70
448DA Flag, each	11.50
449DA Flag, each	13.05
450DA Flag, each	18.85
451DA Flag, each	30.75
452DA Flag, each	33.00
453DA Flag, each	36.15
454DA Flag, each	38.50
455DA Flag, each	8.25

The Ward-Stilson Co., Anderson, Ind.

456DA	Flag, each.....	15.75
457DA	Flag, each.....	18.38
458DA	Flag, each.....	41.25
459DA	Flag, each.....	43.50
460DA	Flag, each.....	71.25
461DA	Flag, each.....	93.75
462DA	Flag, each.....	3.45
463DA	Flag, each.....	4.50
464DA	Flag, each.....	6.55
465DA	Flag, each.....	7.00
466DA	Flag, each.....	8.25
467DA	Flag, each.....	8.25
468DA	Flag, each.....	9.30
469DA	Flag, each.....	10.50
470DA	Flag, each.....	12.60
471DA	Flag, each.....	15.25
472DA	Flag, each.....	15.70
473DA	Flag, each.....	16.90
474DA	Flag, each.....	21.00
475DA	Flag, each.....	27.85
476DA	Flag, each.....	28.75
477DA	Flag, each.....	31.20
478DA	Flag, each.....	34.65
479DA	Flag, each.....	44.55
480DA	Flag, each.....	46.65
481DA	Flag, each.....	48.00
482DA	Flag, each.....	1.90
483DA	Flag, each.....	2.95
484DA	Flag, each.....	3.30
485DA	Flag, each.....	3.60
486DA	Flag, each.....	3.90
487DA	Flag, each.....	4.15
488DA	Flag, each.....	4.50
489DA	Flag, each.....	6.00
490DA	Flag, each.....	6.75
491DA	Flag, each.....	8.05
492DA	Flag, each.....	8.25
493DA	Flag, each.....	8.70
494DA	Flag, each.....	9.90
495DA	Flag, each.....	13.15
496DA	Flag, each.....	15.75
497DA	Flag, each.....	19.65
498DA	Flag, each.....	22.75
499DA	Flag, each.....	25.15
500DA	Belt, each.....	3.25
501DA	Belt, each.....	3.75

502DA	Belt, each.....	6.15
503DA	Cover, each.....	3.00

Page 7.

504DA	Banner, ea.....	\$128.50
505DA	Banner, ea.....	105.00
506DA	Belt, each.....	3.25
507DA	Belt, each.....	3.75
508DA	Belt, each.....	6.15
509DA	Cover, each.....	5.95
510DA	Funeral Drape	5.90
511DA	Stand, each.....	3.45
512DA	Stand, each.....	3.90
513DA	Stand, each.....	6.40
514DA	Stand, each.....	4.20
515DA	Stand, each.....	5.20
516DA	Signal35

Page 8.

517DA	School House.....	\$112.50
518DA	School House	123.75
519DA	Quaker Musket	4.60
520DA	Quaker Musket	7.95
521DA	Quaker Musket	8.85
522DA	Uncle Sam's Wig, each	7.50
523DA	Uncle Sam's Beard, each	2.65

Page 9.

524DA	Sword, each.....	\$ 9.90
525DA	Sword, each.....	11.25
526DA	Sword, each.....	12.00
527DA	Sword, each.....	12.75
528DA	Sword, each.....	18.40
529DA	Waist Belt, ea.	4.90
530DA	Waist Belt, ea.	5.20
531DA	Waist Belt, ea.	7.15
532DA	Waist Belt, ea.	7.45
533DA	Waist Belt, ea.	8.80
534DA	Waist Belt, ea.	9.15
535DA	Tableau Re- flector.....	Withdrawn
536DA	Tableau Re- flector.....	Withdrawn
537DA	Fire Cones, box of twelve.....	.85

The Ward-Stilson Co., Anderson, Ind.

538DA Fire Cones, six boxes	4.20
539DA Fire Cones, box of twelve.....	.85
540DA Fire Cones, six boxes	4.20

Page 10.

541DA Ballot Box, ea.\$	2.70
542DA Ballot Box, ea.	2.70
543DA Ballot Box, ea.	2.95
544DA Ballot Box, ea.	3.45
545DA Ballot Box, ea.	5.65
546DA Ballots, 100.....	.85
547DA Ballots, 100.....	1.65
548DA Ballots, 100.....	3.40
549DA Ballots, 100.....	3.40
550DA Gavel, each.....	.75
551DA Gavel, each.....	2.80
552DA Gavel, each.....	3.75
553DA Gavel, each.....	

..... Withdrawn

554DA Gavel, each.....	20.65
555DA Gavel Block....	1.90
556DA Gavel Block....	4.30
557DA Gavel Block....	5.55
558DA Hoodwink, ea.	.21
Hoodwinks, doz.	2.40
559DA Hoodwink, ea.	.53
560DA Hoodwink, ea.	.90
561DA Hoodwink, ea.	1.80
562DA Hoodwink, ea.	3.40
563DA Hoodwink, ea.	4.05

Page 11.

Embossed Ribbon Marker	\$ 2.55
564DA Bible, each.....	3.00
565DA Bible, each.....	5.95
566DA Bible, each.....	6.45
567DA Bible, each.....	8.25
568DA Charter Drape	9.70
569DA Charter Drape	7.45
570DA Funeral Rosette	1.60
571DA Funeral Rosette	1.05

Page 12.

572DA Hall Lantern, each	\$23.65
-----------------------------------	---------

573DA Hall Lantern, each	27.15
-----------------------------------	-------

574DA Hall Lantern, each	30.45
-----------------------------------	-------

575DA Hall Lantern, each	27.85
-----------------------------------	-------

576DA Hall Lantern, each	30.40
-----------------------------------	-------

577DA Hall Lantern, each	35.60
-----------------------------------	-------

578DA Extra Flash- ers, each	4.20
---------------------------------------	------

579DA Extra Slides, each	5.55
-----------------------------------	------

580DA Hall Lantern Globes, each	16.75
--	-------

581DA Hall Lantern Globes, each	21.25
--	-------

Page 13.

582DA Seal, each.....\$	7.50
583DA Seal, each.....	9.75

584DA Ritual Case....	3.40
-----------------------	------

585DA Ritual Case....	4.15
-----------------------	------

586DA Ritual Case....	9.60
-----------------------	------

587DA Ritual Case....	10.35
-----------------------	-------

588DA Punch	1.35
-------------------	------

589DA Punch	1.50
-------------------	------

Page 14.

590DA Minute Book, each	\$10.05
----------------------------------	---------

591DA Blotter Min- ute Leaves, pad.....	1.50
--	------

592DA Cushing's Par- liamentary practice..	.75
---	-----

593DA Robert's Rules of Order	2.25
--	------

594DA U. S. Infantry Tactics	1.50
---------------------------------------	------

Page 15

595DA Ledger, each.\$	7.15
-----------------------	------

596DA Ledger, each..	10.50
----------------------	-------

597DA Ledger, each..	17.70
----------------------	-------

Page 16

598DA Ledger, each...\$	4.00
-------------------------	------

599DA Ledger, each....	5.00
------------------------	------

The Ward-Stilson Co., Anderson, Ind.

600DA Minute Book, each	4.00
601DA Minute Book, each	4.80
602DA Treasurer's Cash Book, each.....	3.75
603DA Treasurer's Cash Book, each.....	5.25

Page 17.

604DA Secretary's Cash Book, each.....\$	3.75
605DA Secretary's Cash Book, each.....	4.00
606DA Proposition for Membership, pad	2.25

Page 18.

607DA Roll Book, ea.\$	3.40
608DA Receipt Case, each51
609DA Receipt Cases, 2 to 12, each.....	.44
610DA Receipt Cases, 13 to 25, each.....	.41
611DA Receipt Cases, each84
612DA Receipt Cases, 2 to 12, each.....	.51
613DA Receipt Cases, 13 to 25, each.....	.48

Page 19.

614DA Record of Sick Benefits, each	\$ 4.20
615DA Obituary Record, each.....	3.75

Page 20.

616DA Visitor's Register, each	\$ 3.75
617DA Due Books, 25 books	2.70
618DA Due Books, 50 books	4.10
619DA Due Books, 75 books	5.75
620DA Due Books, 100 books	7.80

621DA Due Books, 150 books	10.15
622DA Due Books, 200 books	13.35
623DA Due Books, 25 books	2.10
624DA Due Books, 50 books	3.20
625DA Due Books, 75 books	5.25
626DA Due Books, 100 books	5.90
627DA Due Books, 150 books	8.60
628DA Due Books, 200 books	10.30

Page 21.

629DA Post Cards, 250	\$ 6.45
630DA Post Cards, 500	8.25
631DA Post Cards, 1000	11.25
632DA Post Cards, 2000	16.90
633DA Post Cards, 250	6.45
634DA Post Cards, 500	8.25
635DA Post Cards, 1000	11.25
636DA Post Cards, 2000	16.90
637DA Statement Cards, 250	4.60
638DA Statement Cards, 500	6.75
639DA Statement Cards, 1000	8.85
640DA Statement Cards, 2000	15.40
641DA Statement Cards, 250	2.95
642DA Statement Cards, 500	5.05

The Ward-Stilson Co., Anderson, Ind.

643DA Statement	
Cards, 1000	7.60
644DA Statement	
Cards, 2000	8.85

Page 22.

645DA Notice of Ar- rearage, pad	\$ 1.15
646DA Notice of Ar- rearage, pad	2.15
647DA Notice of Ar- rearage, pad	3.25
648DA Notice of Ar- rearage, pad	3.90
649DA Notice of Elec- tion, pad	1.15
650DA Notice of Elec- tion, pad	3.25
651DA Notice of Sus- pension, pad	1.15
652DA Notice of Sus- pension, pad	3.25
653DA Orders on Treasurer, book 100	.95
654DA Treasurer's Receipt to Secre- tary, book 100.....	.95

Page 23

655DA Letter Heads, 250	\$ 6.05
656DA Letter Heads, 500	8.70
657DA Letter Heads, 1000	12.40
658DA Note Heads, 250	5.05
659DA Note Heads, 500	7.05
660DA Note Heads, 1000	10.90
661DA Envelopes, 250	5.30
662DA Envelopes, 500	7.30
663DA Envel'ps, 1000	10.50

Page 24.

664DA Headdress, ea.\$	2.65
------------------------	------

665DA Headdress, ea.	2.90
666DA Headdress, ea.	3.25
667DM Headdress, ea.	3.40
668DA Headdress, ea.	3.05
669DA Headdress, ea.	4.40
670DA Headdress, ea.	2.05
671DA Headdress, ea.	2.10
672DA Headdress, ea.	2.25
673DA Headdress, ea.	2.35
674DA Headdress, ea.	2.20
675DA Headdress, ea.	2.70
676DA Headdress, ea.	2.65
677DA Headdress, ea.	2.90
678DA Headdress, ea.	3.25
679DA Headdress, ea.	3.40
680DA Headdress, ea.	3.05
681DA Headdress, ea.	4.40
682DA Headdress, ea.	4.75
683DA Headdress, ea.	4.85
684DA Headdress, ea.	5.35
685DA Headdress, ea.	5.55
686DA Headdress, ea.	5.05
687DA Headdress, ea.	6.50
688DA Cap, each.....	5.80
689DA Hat, each.....	3.40
690DA Hat, each.....	3.85
691DA Hat, each.....	4.10
692DA Hat, each.....	5.50
693DA Hat, each.....	5.35
694DA Headdress, ea.	3.50
695DA Headdress, ea.	3.60
696DA Headdress, ea.	4.00
697DA Headdress, ea.	4.15
698DA Headdress, ea.	3.75
699DA Headdress, ea.	5.15
700DA Hat, each.....	6.40

Page 25

701DA Robe	\$13.15
702DA Robe	15.15
703DA Robe	17.35
704DA Robe	19.55
705DA Robe	28.40
706DA Robe	31.70
707DA Robe	17.05
708DA Robe	19.50

The Ward-Stilson Co., Anderson, Ind.

709DA Robe	21.90
710DA Robe	31.95
711DA Robe	35.60
712DA Robe	26.50
713DA Robe	53.70
714DA Robe	17.75
715DA Robe	20.20
716DA Robe	22.60
717DA Robe	32.70
718DA Robe	36.30
719DA Robe	27.25
720DA Robe	54.40

Page 26

721DA Costume	\$20.00
722DA Costume	22.60
723DA Costume	25.15
724DA Costume	35.45
725DA Costume	39.30
726DA Costume	29.65
727DA Costume	58.95
728DA Costume	14.30
729DA Costume	16.20
730DA Costume	18.10
731DA Costume	31.25
732DA Costume	34.10
733DA Costume	28.30
734DA Costume	49.00
735DA Robe	39.25
736DA Robe	41.30
737DA Robe	50.40
738DA Robe	53.50
739DA Robe	46.95
740DA Robe	68.90

Page 27

741DA Costume	\$23.70
742DA Costume	26.25
743DA Costume	28.80
744DA Costume	41.20
745DA Costume	44.60
746DA Costume	36.00
747DA Costume	63.70
748DA Drape	25.00
749DA Drape	25.80
750DA Drape	26.50

751DA Drape	33.85
752DA Drape	34.95
753DA Drape	32.25
754DA Drape	44.75
755DA Costume	26.80
756DA Costume	29.20
757DA Costume	31.60
758DA Costume	41.20
759DA Costume	44.85
760DA Costume	35.80
761DA Costume	64.30

Page 28.

762DA Costume	\$21.30
763DA Costume	24.55
764DA Costume	25.90
765DA Costume	27.50
766DA Costume	26.25
767DA Costume	28.65

Page 29.

768DA Costume	\$24.10
769DA Costume	25.80
770DA Costume	11.00
771DA Costume	13.00
772DA Costume	15.25
773DA Costume	17.40
774DA Costume	26.25
775DA Costume	29.65
776DA Costume	14.25
777DA Costume	16.25
778DA Costume	18.45
779DA Costume	20.80
780DA Costume	29.80
781DA Costume	33.15

Page 30.

782DA Outfit	\$201.70
783DA Outfit	224.30
784DA Outfit	235.35

Page 31.

785DA Outfit	\$233.80
786DA Outfit	248.20
787DA Outfit	315.00

Order Blank for D. of A. Council Requirements

Catalogue No. 12

Date _____ 19____

Town _____ County _____ State _____

THE WARD-STILSON CO., Anderson, Ind.

Herewith find order for goods for

Name of Council _____, No. _____ D. of A.

at _____ State of _____ to be shipped

By ^{Freight} Express ^{Parcels Post} _____ Committee _____
 (If by express, give name of Express Co.)

Shipping Point _____

Ship to _____

Article No.	Page	Quan.	Name and Description of Article	Price
Total				

ATTACH SEAL HERE. CONTINUED ON BACK OF SHEET.
 If you have no Seal, have Order signed by Committee.

BUSINESS REPLY

NO POSTAGE STAMP NECESSARY IF MAILED

3c-POSTAGE WILL BE

THE WARD-ST

FIRST CLASS

PERMIT NO. 1

(Sec. 384 1/2 P.L.&R.)

ANDERSON, IND.

ENVELOPE

MADE IN THE UNITED STATES

POSTAGE PAID BY-3c

WILSON CO.

ANDERSON,

INDIANA

