

PENNSYLVANIA FARMER



BOOK OF PATTERNS

PRICE OF PATTERNS 15 CENTS
ADDRESS ORDERS TO

PENNSYLVANIA FARMER
PATTERN DEPARTMENT
243 WEST 17th STREET
NEW YORK 11, N. Y.

THE WOMAN OF TODAY . . . YOU!

Let us picture you as you are today in this year of rationing . . . and heroism, 1943. You've a slenderer-than-ever waist, you've a smoother-than-ever hips, your skirt is wide enough to leave you action-free, but not too wide! Fads and fur-belows you disdain with upturned nose. You're a woman of action, now . . . full of pep and patriotism, throwing all your excess energy, in some cases *all* of your energy, into the service of your country. Saving! Conserving! Salvaging! *Working!* That's *you* in 1943.

To keep you looking your womanly best while your mind is far above the trivial . . . that's the object of these pages. To *help* you save, conserve and salvage, too. Now cast your eye upon the opposite page. Note the all-important trend of today . . . toward shirtwaist dresses that open down the front, that open wide and flat in honest cooperation with the ironing board, toward the tailored look, simple and streamlined, toward a *new* Chinese look (Pattern A4252), high-wrapped at the neckline, shorn of all fussiness. Turn the pages. You'll see . . . A group of patterns to be made with salvaged fabric . . . Junior Misses' and Children's Frocks . . . Frocks for Growing Girls. Suggestions for lengthening and widening their dresses . . . Two-piecers, Jumpers, Interchangeables, another great trend of today! . . . Patterns to be used in remodeling your out-of-date dresses . . . Thrifty and thoughtful Christmas gifts . . . Smart, launder-easy House Frocks and Aprons . . . Defense Uniforms and Slacks . . . Free Glove and Bag pattern.

NEWS ABOUT FABRICS in a war-time world—Biggest news on the fabric front is the importance of rayon, especially *spun rayon*. Its many variations are among the most recent developments in the fabric field. Spun rayon fabrics sometimes have the look of wool. Though not as warm, they drape well, wear well, wash well and are easy to sew. Wool and rayon, wool and cotton mixtures are also popular this season.



Coming to the forefront is *aralac*, a brand new filament manufactured from casein (milk). Spun into yarn, it is the basis of a host of smartly textured and **definitely** wearable fabrics.

MIX AND JUGGLE YOUR COLORS—Now that dye is government-restricted the battle-cry is "Color for morale . . . color for its own sake . . . *all* colors while they last!" Don't be afraid to use your imagination . . . mixing two tones in a dress . . . even three, four or five. Let this color-freedom aid you in combining salvaged fabrics . . . in remodeling.

MENDING—IT'S BEING DONE! The good old patch, like Dobbin, the bob-tailed mare is on the road again! Women are learning to mend . . . learning how easy it is to cut a square of new fabric, boil it until it matches the old . . . lay it carefully over the thread-bare spot,

matching stripes or checks with an ease they never before thought possible. And, wonder of wonders in this age of infinite ingenuity, they're learning the possibilities of the patch as a new, smart decoration. Sweaters, worn at the elbows may now take on a new lease of life, sporting bright colored patches over the one-time ragged gaps. It's a smart idea introduced by the college girl. Gaily patched dirndl skirts are fun to wear with a patch-decorated sweater. And now we'll leave you with just a word of wisdom . . . it was wise in Eve's day, it's wiser than ever now . . . wherever you see a rip starting, take a *stitch in time*.

SHOWN ON FRONT COVER.

A4481—Frock. The smoothly-fitting contour of this simple princess frock accents your slim figure. Sizes 11 to 17, 10 to 18. Size 13, $3\frac{3}{4}$ yards 39-inch.

KEEP FIT . . . KEEP TRIM KEEP BUSY

A4506—Frock. Smart button front. Launderers easily and goes everywhere. Sizes 34 to 48. Size 36, 4 yards 35-inch.

A4252—Frock. From China comes the idea for this streamlined afternoon dress. Size 12-20. Size 16, 3¾ yds. 39-in.

A4399—Frock. Tucked at shoulders, a chic detail. Sizes 34 to 46. Size 34, 3 yards 39-inch; ¾ yard contrast.



A4506



A4399



A4252



A4445



A4397

A4445—Frock. Embroider the pocket. Transfer pattern included. Sizes 14-42. Size 16, 3¾ yds. 39-in.

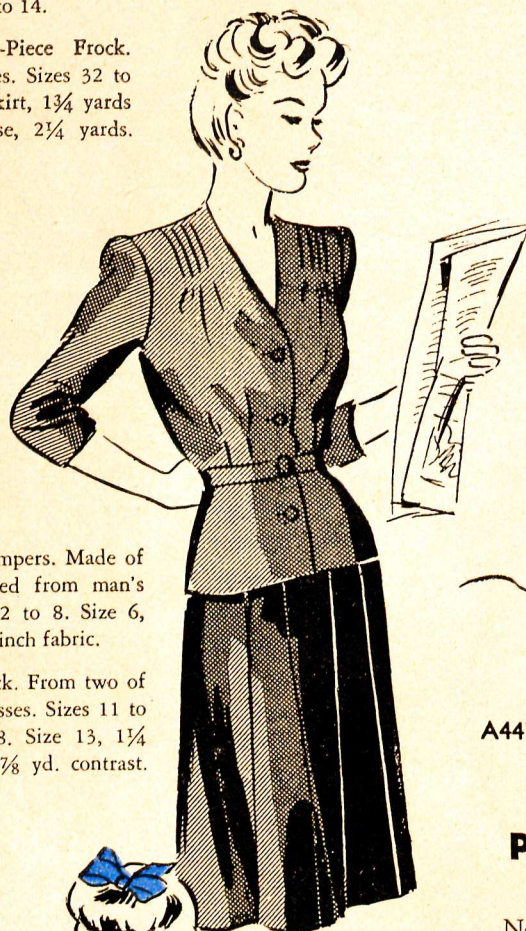
A4397—Frock. An unaffected dress with youthful charm. Sizes 14 to 42. Size 16, 3¾ yards 39-inch.

A4471—Ski-Suit. Make this from an old bath robe and coat. Jacket and trousers may match. Sizes 2 to 14.

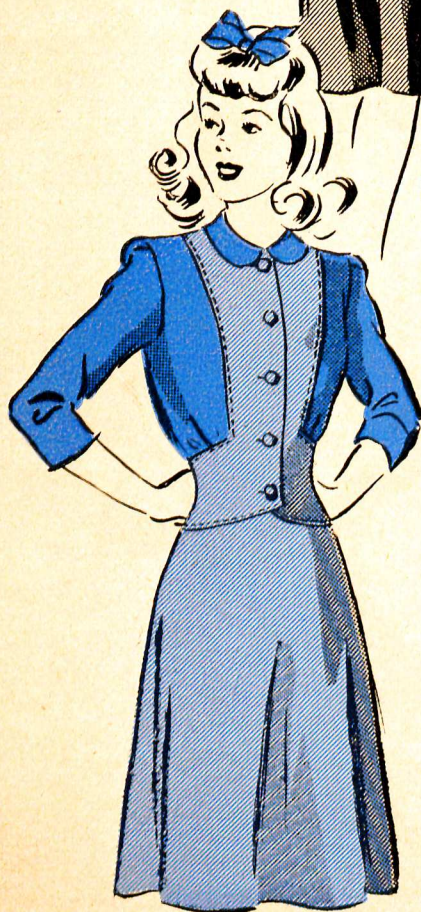
A4441 — Two-Piece Frock. Use old dresses. Sizes 32 to 46. Size 36, skirt, $1\frac{3}{4}$ yards 39-inch; blouse, $2\frac{1}{4}$ yards.

A4447 — Rompers. Made of fabric salvaged from man's shirts. Sizes 2 to 8. Size 6, $1\frac{3}{8}$ yards 35-inch fabric.

A4495—Frock. From two of Mother's dresses. Sizes 11 to 17, 12 to 18. Size 13, $1\frac{1}{4}$ yds. 54-in.; $\frac{7}{8}$ yd. contrast.



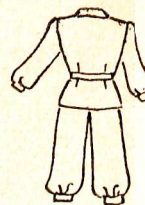
A4441



A4495



A4471



A4447



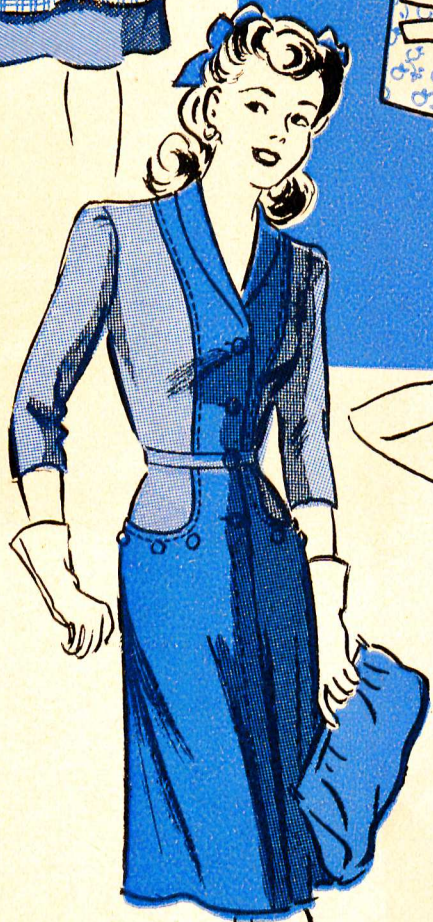
PUT THAT LAZY FABRIC TO WORK

Now we're going into your closets . . . all of your closets. In fact we're even about to rummage among your linen and household supplies. Why? Because we're perfectly sure that you're harboring some lazy fabric . . . keeping in unpatriotic idleness some Class AAA material that should be impressed immediately into useful service. So give us a flashlight and let us see what we shall find. Ah! Had you forgotten about these two old dresses, vintage of 1940? Look at those wide skirts! Between the two dresses there's enough good, unworn fabric to make that smart two-piece dress (Pattern A4441) or the junior miss frock below it (Pattern A4495) or that stunning 2-tone frock (Pattern A4478). Have the dresses dry-cleaned, or wash them, rip them apart, and get out the old sewing basket! What's this we're hauling out from the *sanctum sanctorum* of your wardrobe? That old bath robe! Of course it's beyond mending. But look at the good fabric it will yield! That fabric will

make ski-trousers for your kiddie, and you can make a warm ski-jacket from that old overcoat of Dad's we see hanging there. (See Pattern A4471.) And, by the way, those worn shirts of Dad's can be used to make the cute rompers (Pattern A4447). So you have an old evening dress! . . . you've been wondering what to do with the beautiful material it's made of. Why not use it for the slip (Pattern A4498, opposite page). Here's a cotton housecoat. We'll admit it's badly ripped under the arms and frayed at the neck and hem. But just take a look at the charming frock illustrated (Pattern A4457). It's been made from just such a housecoat. The accompanying diagram shows you how easily the pattern pieces of the dress fit into those of the original roomy garment. Finally—that vivacious, and colorful apron (Pattern A4497), can be made from the good parts of two gained or worn table cloths, shown here combining a solid-color cloth and a checked one.



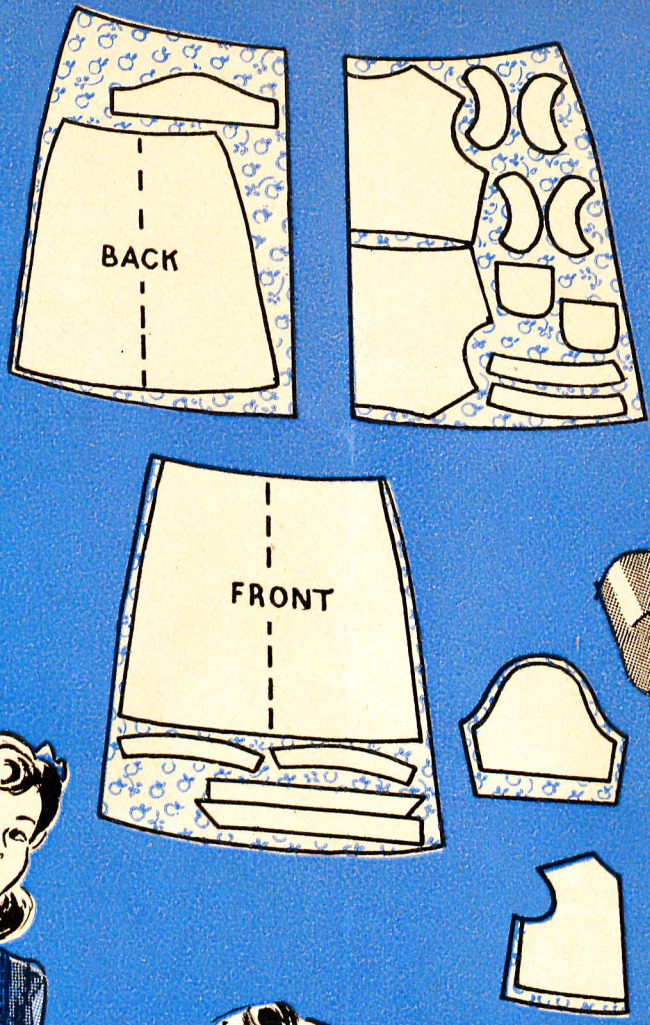
A4497



A4497 — Apron. Sizes small, (32-34), medium (36-38), large (40-42). Small size, 1 5/8 yards 35-inch and 3/4 yard contrast.

A4478—Frock. Sizes 14 to 42. Size 16, 2 1/4 yards 39-inch and 1 1/4 yards contrast.

A4478



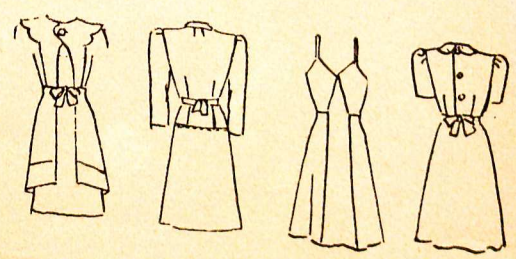
A4498

A4498 — Slip. Made from an old evening dress. Sizes 34 to 48. Size 36, 2 3/4 yards 39-inch fabric.

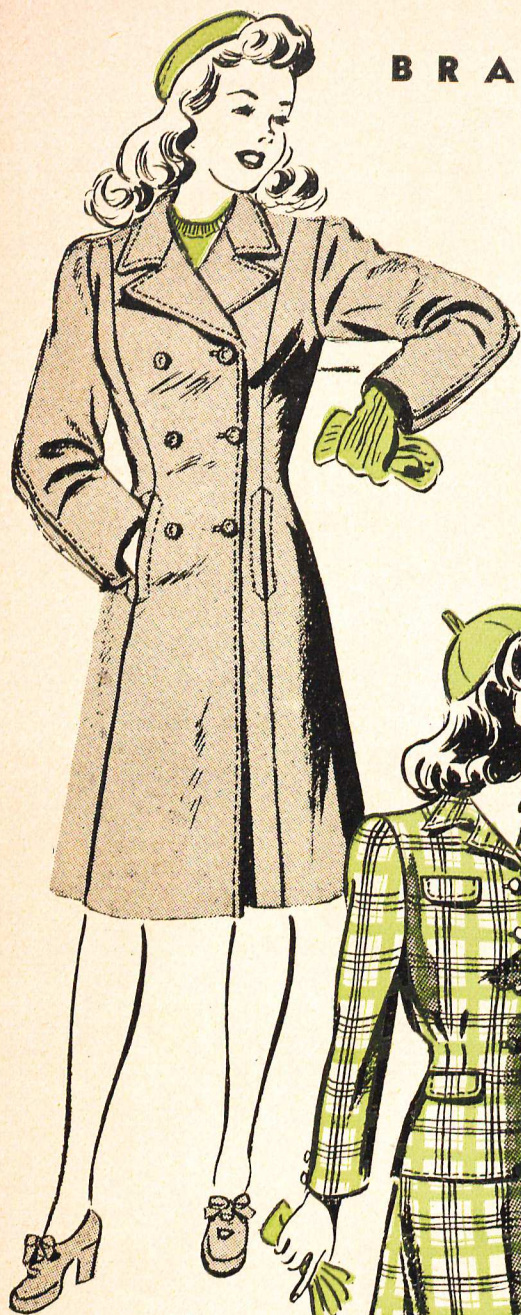
A4457—Frock. Made from an old house coat. Sizes 12 to 20. Size 16, 3 1/8 yards 35-inch fabric.



A4457



BRAVE YOUNG WORLD



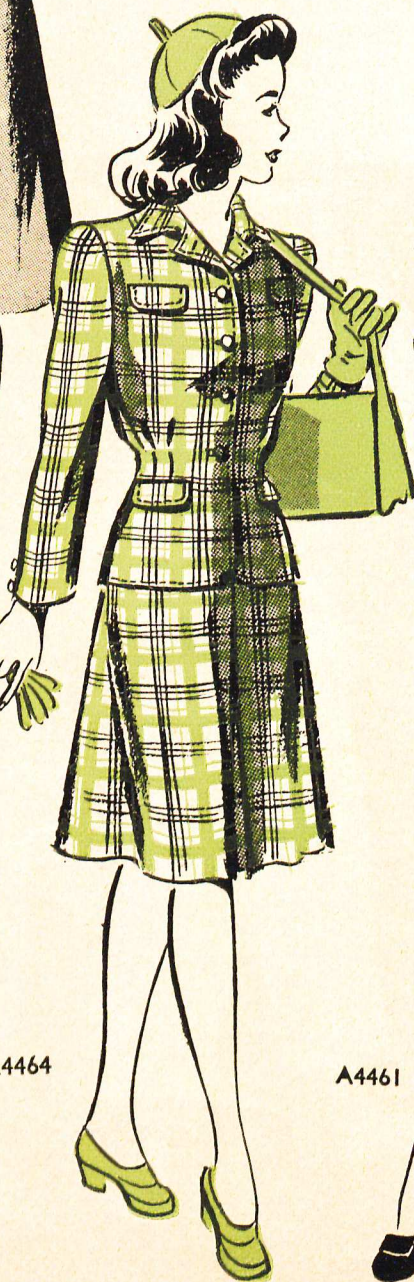
A4462

A4462—Coat. All-purpose reefer to wear over dresses, or slip on over suits. Sizes 11 to 17; 12 to 20.

A4464—Suit. Dressmaker lines to flatter a young figure. Sizes 11 to 17. Size 13, 2½ yards 54-inch.

A4461—Three-Piecer. Sizes 11 to 17. Size 13, skirt, 7/8 yard 54-inch, jerkin ¾ yard; blouse, 1¾ yards 39-inch.

A4463—Slacks Suit. Slim front pleats in slacks; cardigan jacket. Sizes 11 to 17. Size 13, 2¾ yards 54-inch.



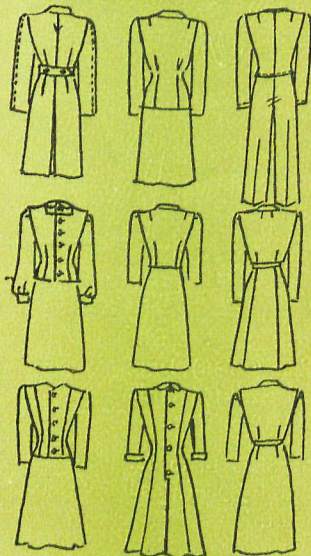
A4464

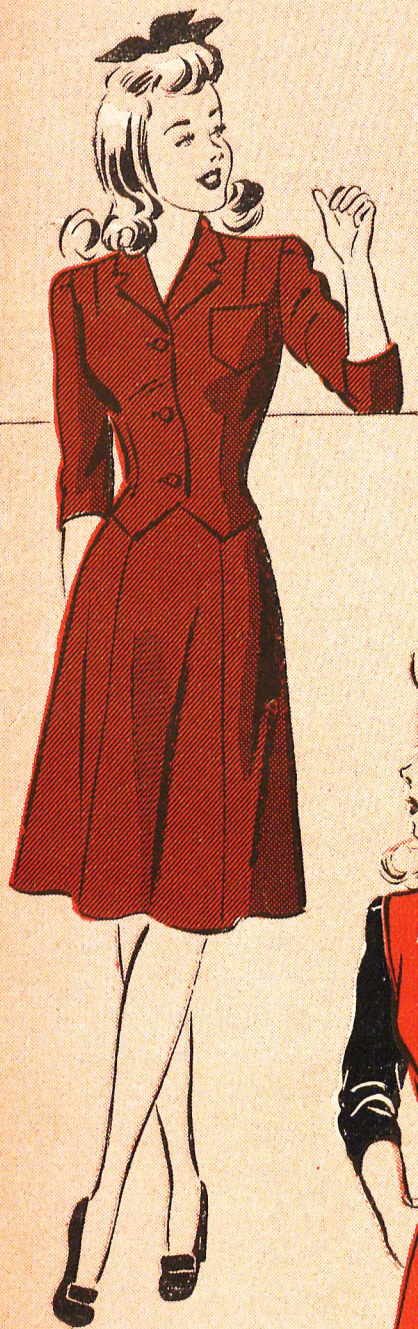


A4461

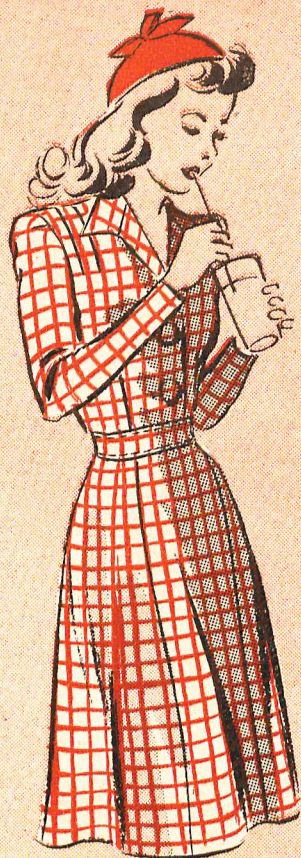


A4463

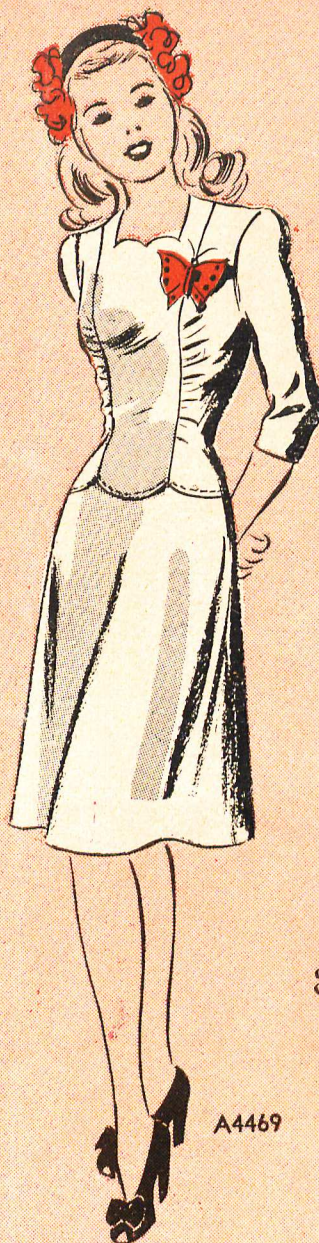




A4467



A4468



A4469



A4465



A4466

A4467—Frock. Chic and charming . . . this two-piece style with waistcoat effect. Sizes 12 to 20. Size 16, $3\frac{5}{8}$ yards 39-inch.

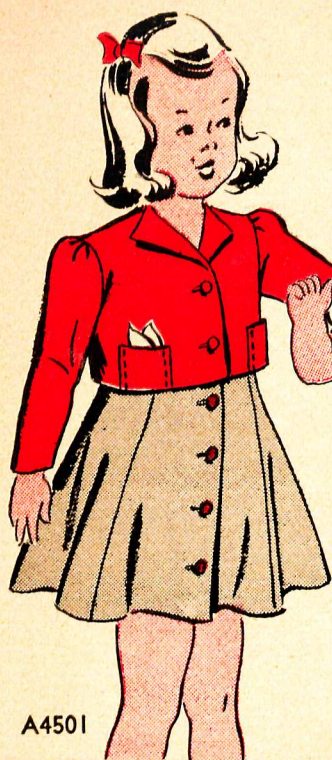
A4466 — Jumper Frock. Jaunty, easy-to-wear button front. Sizes 11 to 17. Size 13, $1\frac{3}{8}$ yards 54-inch; 2 yards 35-inch.

A4468 — Frock. Casual shirtwaister with two huge decorative buttons. Sizes 11 to 17; 12 to 18. Size 13, $2\frac{3}{8}$ yards 54-inch.

A4469 — Frock. Long-waisted, with soft gathers to accent a young beauty's willowy waistline. Sizes 11 to 17. Use rayon crepe.

A4465—Frock. Lithe lines. Easy to make style. Sizes 11 to 17. Size 13, $2\frac{1}{2}$ yards 54-inch and $\frac{3}{8}$ yard 35-inch contrast.

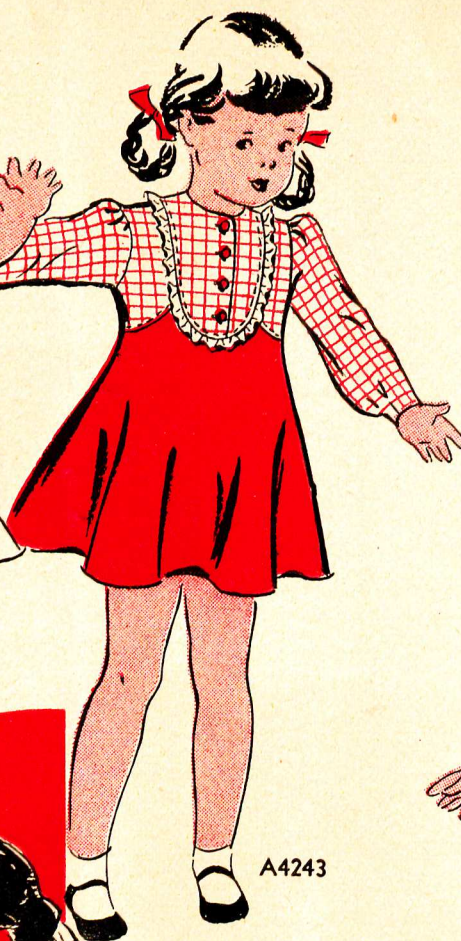
LITTLE BUSY BODIES



A4501



A4387



A4243



A4516



A4519



A4520

A4501—Frock and Jacket. She can button up both with her own little hands. Hanky pockets will please her. Sizes 4 to 10.

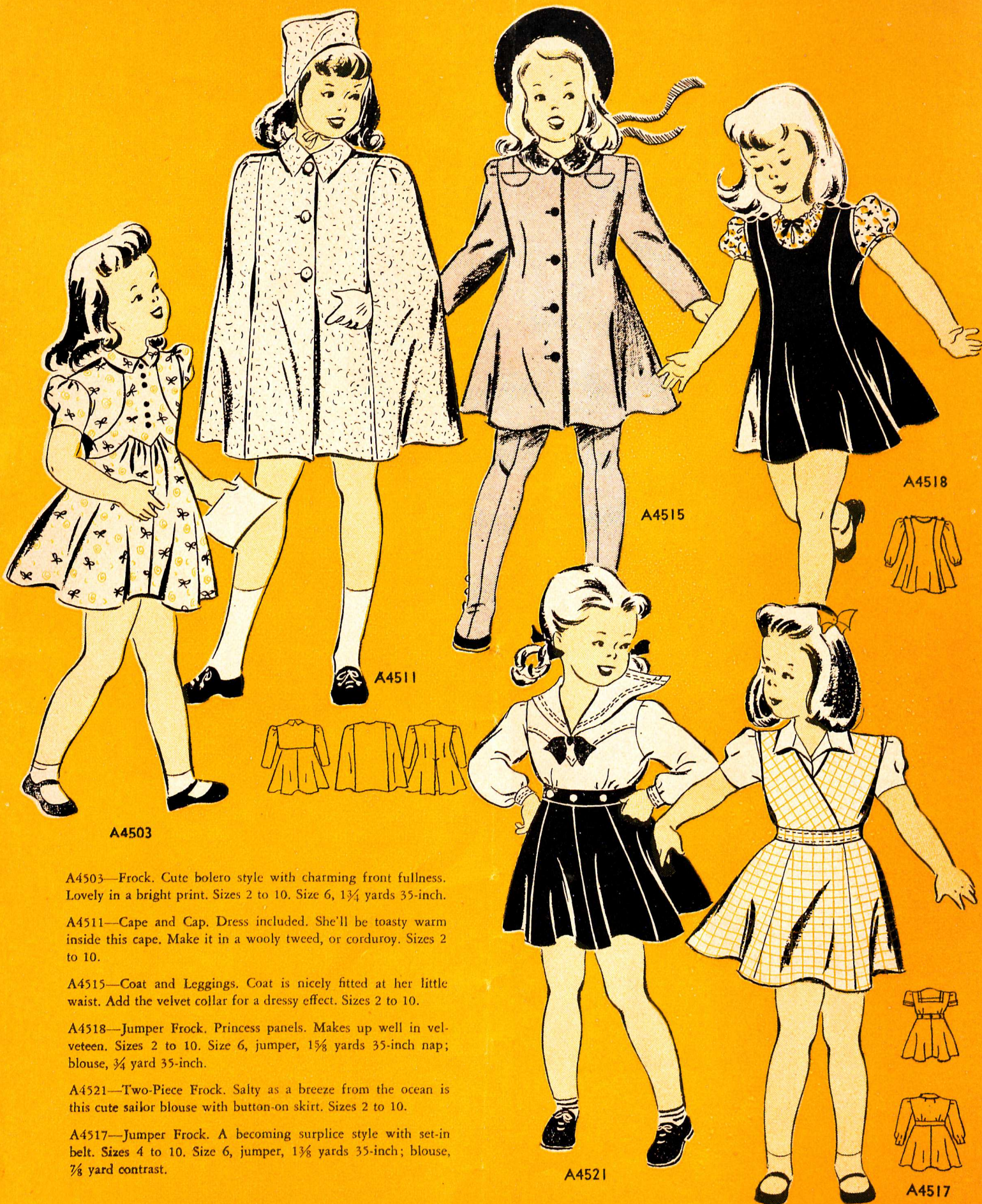
A4387—Frock. The dirndl-type frock is childhood's favorite. Make this adorable style in cotton, trim with ric-rac. Sizes 2 to 10.

A4243—Frock. Ruffling accents the pretty designing of this simple frock with low round yoke. Make it in cotton. Sizes 2 to 10.

A4516—Suit. Comfortable suspender straps keep the smart little skirt always in place. Sizes 2 to 8. Size 6, 1½ yards 54-inch.

A4519—Coat. This manly little overcoat is in classic raglan style . . . always popular . . . always well groomed. Sizes 4 to 16.

A4520—Ski Suit. A warm foil for the biting breath of Jack Frost. It's snug from head to ribbed anklets. Sizes 6 to 14.



A4503

A4503—Frock. Cute bolero style with charming front fullness. Lovely in a bright print. Sizes 2 to 10. Size 6, $1\frac{3}{4}$ yards 35-inch.

A4511—Cape and Cap. Dress included. She'll be toasty warm inside this cape. Make it in a wooly tweed, or corduroy. Sizes 2 to 10.

A4515—Coat and Leggings. Coat is nicely fitted at her little waist. Add the velvet collar for a dressy effect. Sizes 2 to 10.

A4518—Jumper Frock. Princess panels. Makes up well in velveteen. Sizes 2 to 10. Size 6, jumper, $1\frac{5}{8}$ yards 35-inch nap; blouse, $\frac{3}{4}$ yard 35-inch.

A4521—Two-Piece Frock. Salty as a breeze from the ocean is this cute sailor blouse with button-on skirt. Sizes 2 to 10.

A4517—Jumper Frock. A becoming surplice style with set-in belt. Sizes 4 to 10. Size 6, jumper, $1\frac{3}{8}$ yards 35-inch; blouse, $\frac{7}{8}$ yard contrast.

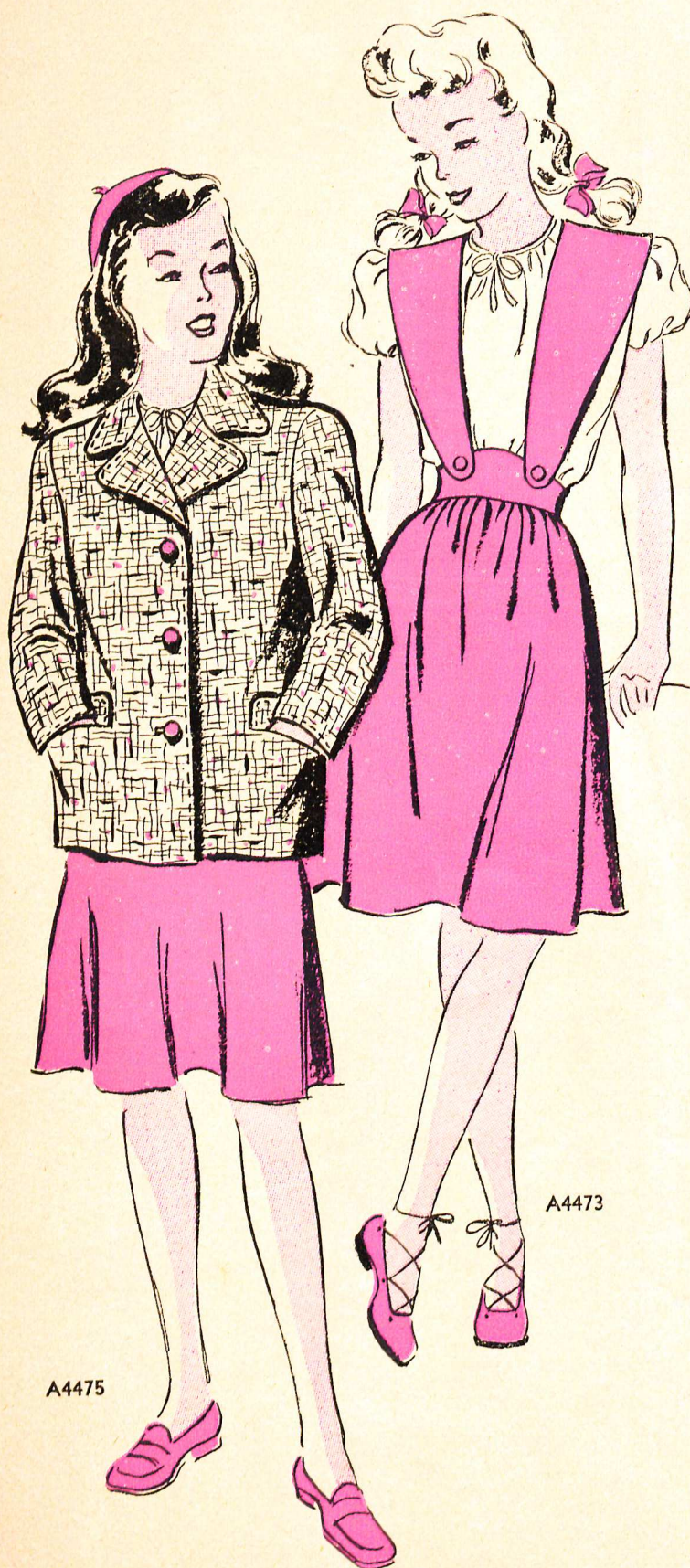
A4521

A4518



A4517

OF GROWING IMPORTANCE



A4475

A4473

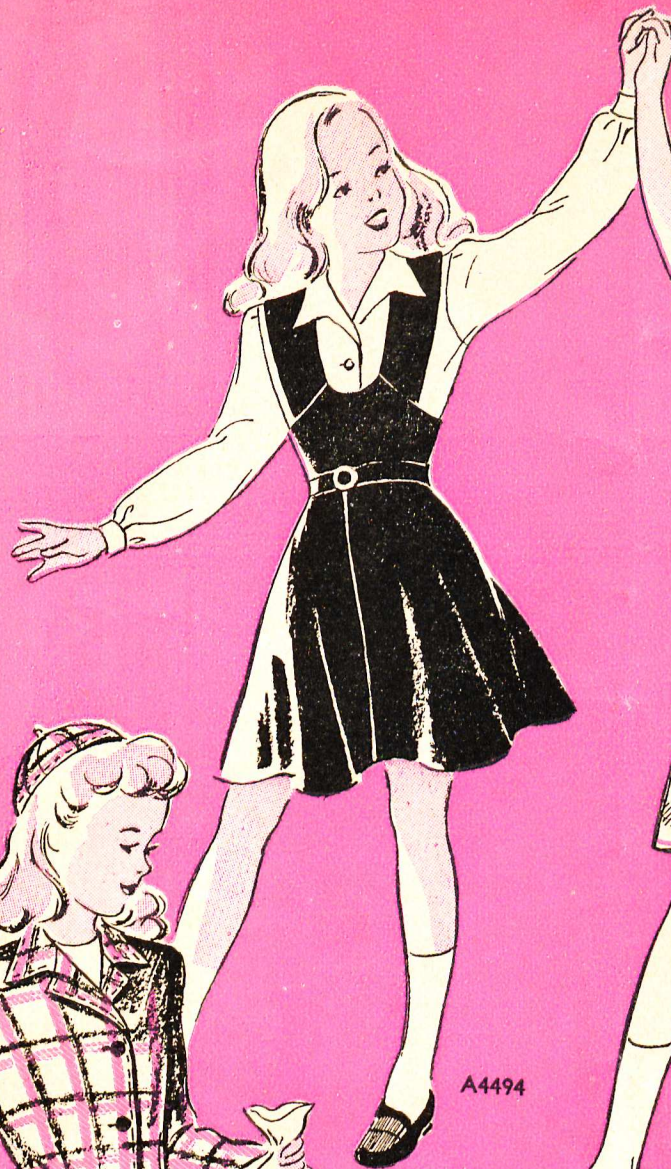
No longer is it necessary to discard Young Daughter's outgrown clothes. Neither is it necessary for still younger Sister to inherit them. Daughter's pet frocks may be so lengthened and widened that she can have at least an extra year's wear from each one. Here are a few hints that Mother will be glad to know.

(1) A plain dress may be lengthened by adding bandings of printed material to the skirt and bodice. Edge banding with ric-rac. A very up-to-the-minute, peasantry effect is the result. (2) A printed cotton may be lengthened in the same way, by adding plain material. (3) Another method of lengthening a frock is to remove the skirt from the bodice, and cut it off several inches below the waistline to allow for extra fullness. Then join it to a wide hip band of new material that has been cut several inches larger than the old top. Lengthen the bodice by setting in a new yoke deeper and wider than the old one. (4) If Daughter has grown chubbier you may widen her dress, while, at the same time adding length, by inserting a new panel down the front . . . a new yoke across the shoulders. Panel and yoke may be cut in one piece. (See illustration.) Or several narrow panels may be inserted to widen the front and back sections of the dress. (5) One of the easiest methods of making an outgrown dress wearable is to remodel it into a jumper by cutting away the sleeve and under-arm portions . . . cutting the neckline lower and wearing blouse or sweater beneath. See reference to jumpers further back in this issue. Just a hint . . . In remodeling your Daughter's dress consider the present vogue for contrasting and harmonizing colors. It's smart to wear dark or bright touches with pastels. It's smart to wear red, green or watermelon pink with beige. It's smart to contrast bright and dark shades of green or tan.

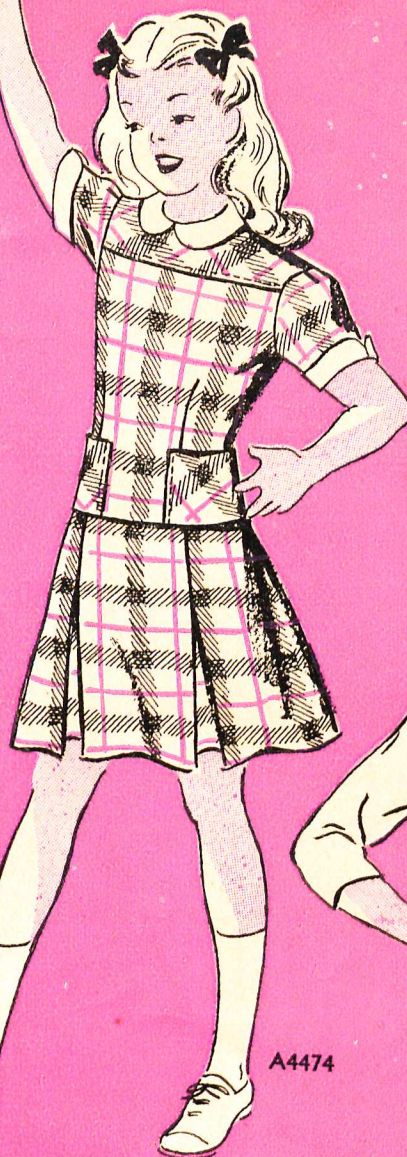
A4475—Coat. Tops in style. Tops your frocks. Sizes 8 to 16. Size 10, $1\frac{3}{4}$ yards 54-inch.

A4473—Jumper Frock. Sizes 6 to 14. Size 10, jumper, $1\frac{1}{4}$ yards 54-inch; blouse, $1\frac{1}{4}$ yards 35-inch.





A4494



A4474



A4499



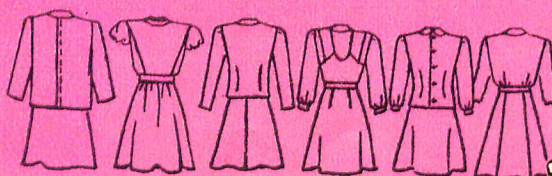
A4472

A4499—Suit and Cap. For class room, for Sunday school, for roller skating. Single-breasted, fitted jacket. Sizes 6 to 14. Size 10, $1\frac{1}{8}$ yards 54-inch.

A4494—Jumper Frock. Grand for every day . . . or for "dress-up" with jumper in velveteen. Sizes 4 to 16. Size 10, jumper, $1\frac{1}{8}$ yards 35-inch; blouse, $1\frac{3}{4}$ yards contrast.

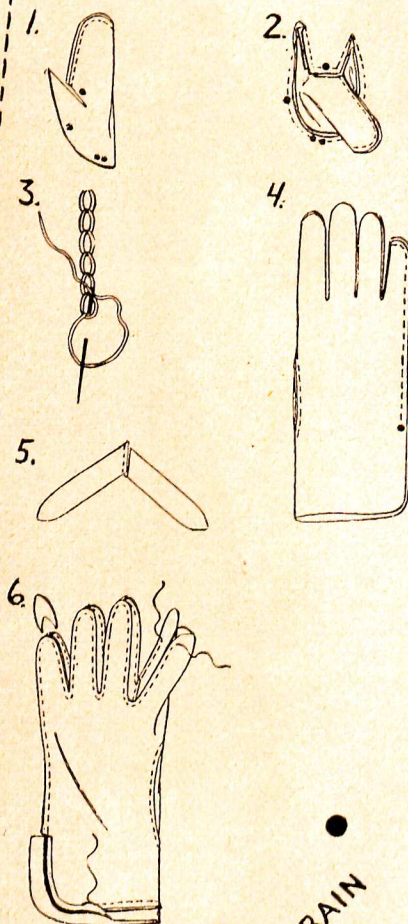
A4474—Two-Piece Frock. Makes a school girl look pert and trim. Use a smart plaid in a wool mixture or spun rayon. Sizes 6 to 14.

A4472 — Two-Piece Frock. Front-button skirt, easy to launder as to make. Teen-Age sizes, 10 to 18. Size 12, skirt, $1\frac{1}{8}$ yards 54-inch; blouse, $1\frac{3}{8}$ yards 39-inch.



GLOVE AND

GLOVE

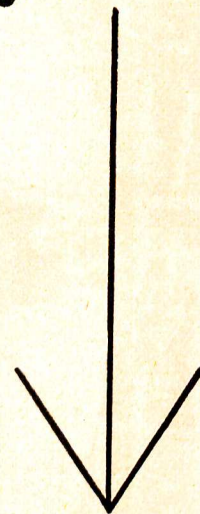


REQUIREMENTS

$\frac{3}{4}$ yd. 39-in. fabric for gloves and bag
 $\frac{1}{2}$ yd. 39-in. for bag lining (rayon taffeta)
 $\frac{1}{2}$ yd. 39-in. for bag interfacing (muslin)
 4-inch slide fastener for change purse
 1 piece buckram 6 x $2\frac{1}{4}$ inches

CUTTING DIRECTIONS FOR SET (See cutting guides.) Fold glove and bag fabric lengthwise, selvages meeting. For bag, measure up 14 inches along folded edge and selvages; cut across. Cut through folded edge to make 2 pieces each 14 inches long and $19\frac{1}{2}$ inches wide.

STRAIGHT GRAIN



For bag loop, cut 2 sections $2\frac{3}{4}$ inches by 7 inches.

Lay glove and thumbs on fabric using triple dots on straight grain; cut on solid lines including thumb openings.

Lay finger inserts on fabric using triple dots on straight grain; cut 12. Cut 2 bias strips, 1 inch by 15 inches.

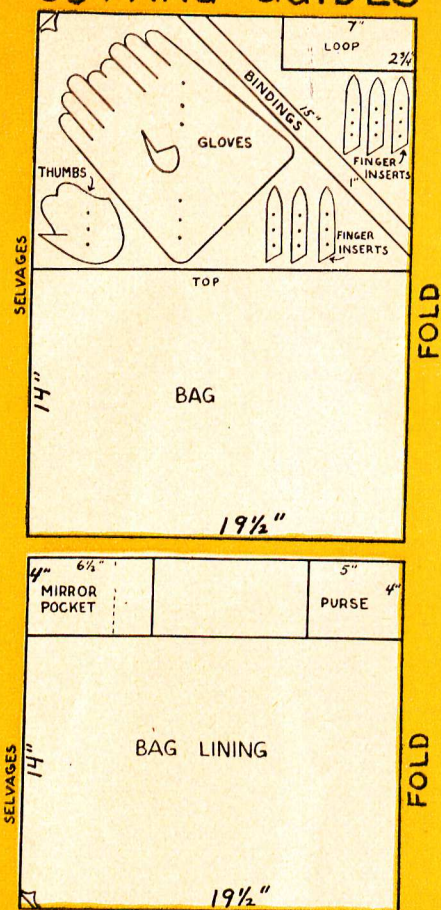
Fold lining lengthwise, selvages meeting. Cut two pieces each 14 inches by $19\frac{1}{2}$ inches. For mirror and lipstick pocket, cut 1 piece 4 inches by $6\frac{1}{2}$ inches. For change purse, cut 2 pieces 4 inches by 5 inches.

Cut bag interfacing, 2 pieces 14 inches by $19\frac{1}{2}$ inches.

STRAIGHT GRAIN

BAG SET

CUTTING GUIDES



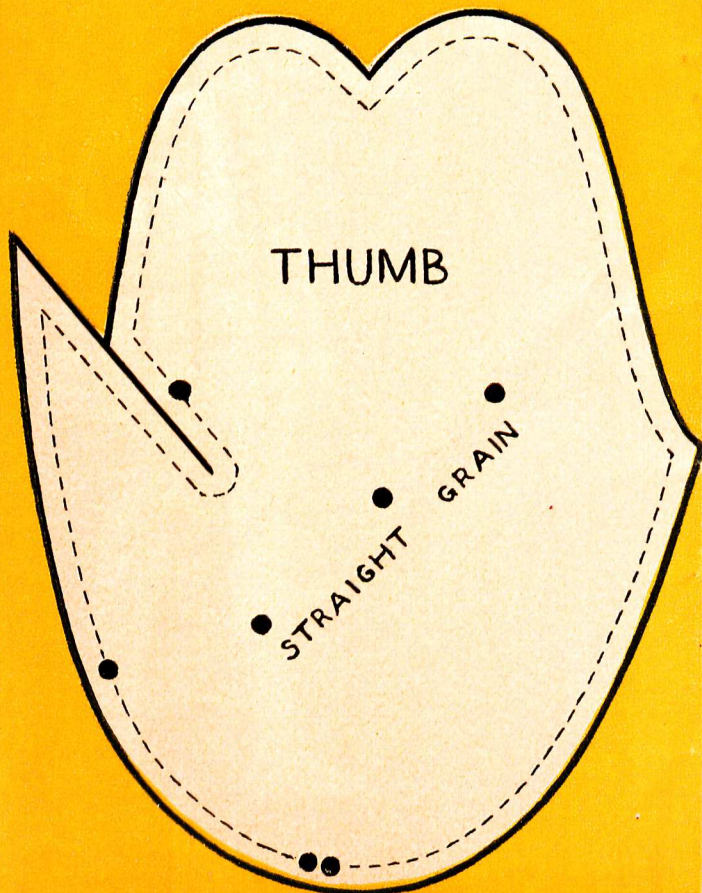
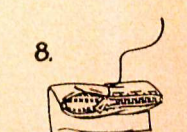
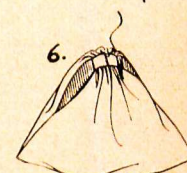
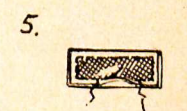
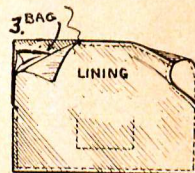
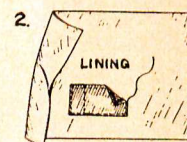
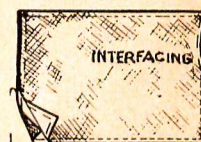
SEWING DIRECTIONS FOR GLOVES

SIZE $6\frac{3}{4}$. ($\frac{1}{8}$ inch allowed for seams.) For smaller sizes, stitch seams deeper where necessary.

1. Fold thumbs lengthwise; stitch.
2. Insert thumbs into glove sections, match ●; stitch.
3. If desired, chain stitch arrow motif.
4. Fold glove sections lengthwise; stitch to ●, clip at ●.
5. Stitch 3 sets of finger inserts for each glove, always 2 together; form a right angle.
6. Stitch inserts, with shorter end toward palm side of gloves. Reshape inserts at top for shorter length fingers. Stitch bias bindings to upper edges and sides of gloves as far as ●. Turn and slip stitch bias on inside.

BAG— $\frac{1}{2}$ inch allowed for seams.

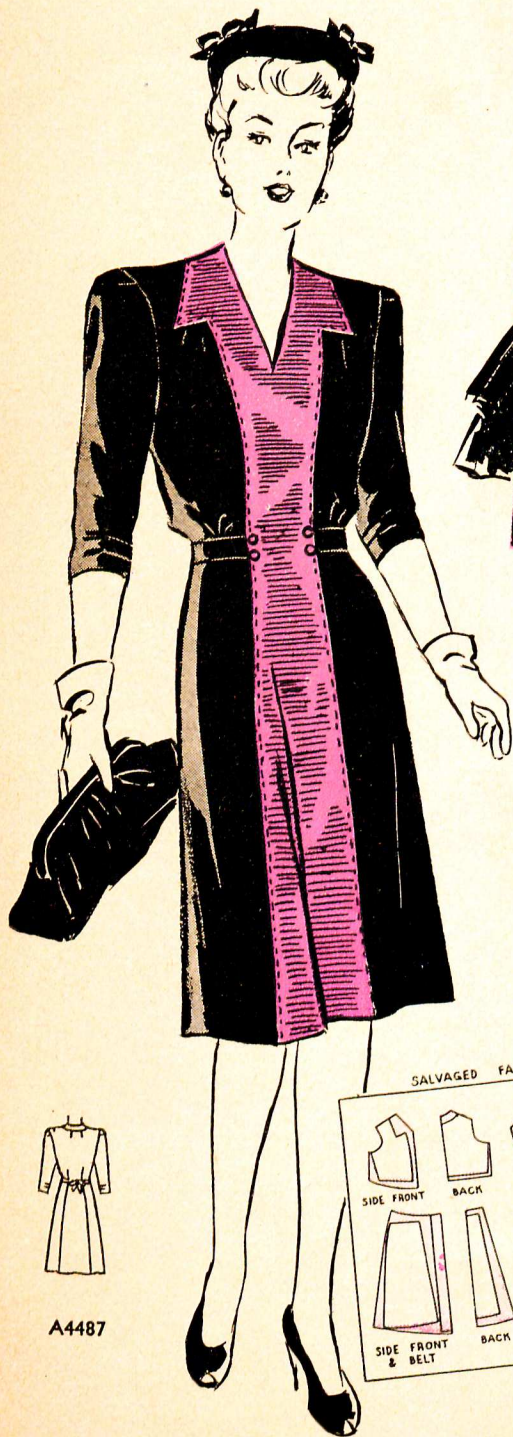
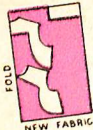
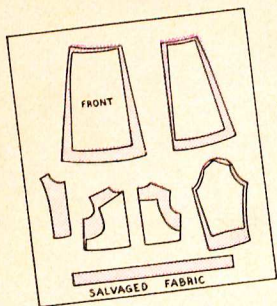
1. Baste interfacing to inside of two bag sections. Seam edges of bag together, leave sides free 7 inches from top. Clip seams at ends of stitching at sides. Press top seam open. Turn bag right side out.
2. Hem top of mirror pocket. Turn, baste under raw edges; stitch basted edges in place on one part of bag lining, as shown (about $3\frac{1}{2}$ inches from lower edge). For lipstick compartment, stitch through pocket and lining $1\frac{1}{2}$ inches in from side.
3. Seam lower edge and sides of lining parts, leave sides free 7 inches from top. Place bag inside lining, outsides meeting. Stitch top edges of lining together; stitch one side opening of bag and lining together as shown. Turn bag to right side, pulling through other side opening. Draw lining to inside.
4. Turn in raw edges of lining and bag and slip stitch together at side opening.
5. Baste buckram inside of strip for ring. Face strip, stitch edges; leave opening. Turn; slip stitch opening.
6. Bring strip through opening and over top of bag; slip stitch edges together. Tack slip-stitched edge of ring to inside of bag.
7. (Change Purse)—Baste under $\frac{1}{2}$ inch at top of two sections for purse. Stitch lower edge and sides together, outsides meeting. Turn right side out.
8. Slip stitch basted edges to slide fastener.



USE WHAT YOU HAVE

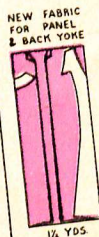
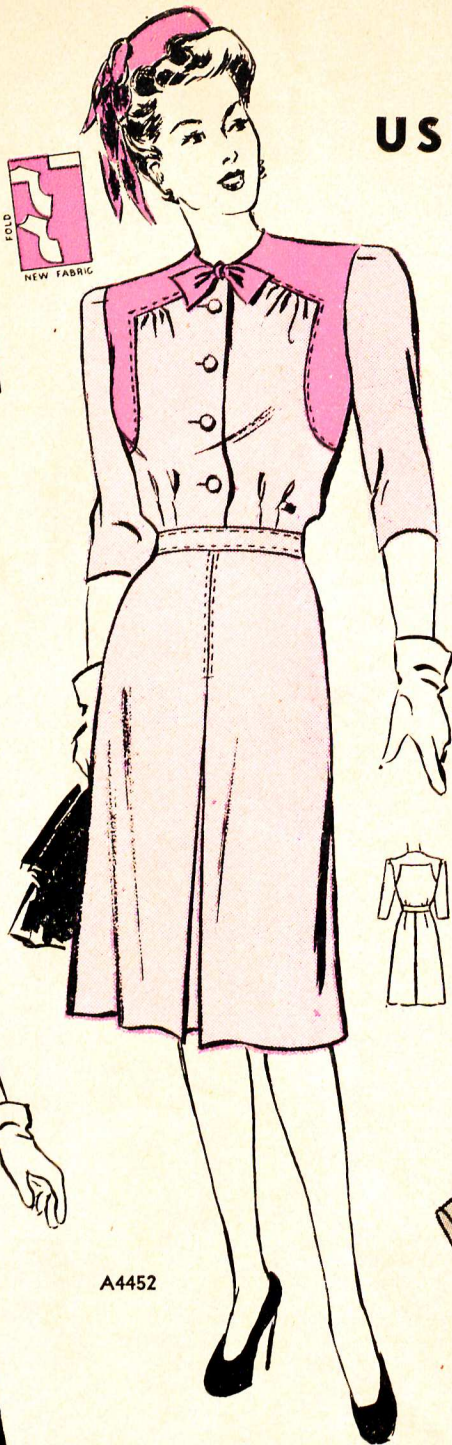
It used to be said that we Americans were a wasteful people. Suddenly waste has become unfashionable and unpatriotic. From one end of the country to the other, women are showing a wholehearted interest in remodeling old clothes, dyeing faded garments, carefully mending rents and tears and generally conserving that which they have rather than drain the war effort of needed materials.

On these pages we are showing a few clever ways of remodeling frocks which have either gone out of style, or, through some accident, if not in the general course of wear and tear, become closet wallflowers. Look at the illustrations on these pages carefully. Then study each one of your near-discarded dresses. When you've decided just how you're going to remodel it, begin by washing or cleaning the garment. If it's a wool which has become shiny in spots, washing may remove the shine. Velvet may be steamed to bring out its nap. Rayon dresses can be carefully washed, ironed with a minimum of heat. When you've made the dresses as fresh as you are able, set to work with one of these easy patterns.

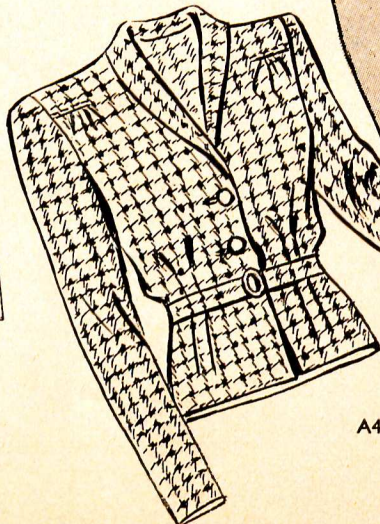
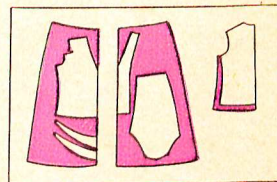


A4487

A4452



1/4 YDS



A4435



MAKE IT LAST

A4487—Frock. This shows a method of widening a tight frock or renewing a worn front. Use two tones of the same color or a contrast. Sizes 34 to 48.

A4452—Frock. Worn underarm and neck portions were cut away. New or salvaged fabric added. Sizes 34 to 46. Size 36, $2\frac{3}{8}$ yards 54-inch, and $\frac{3}{4}$ yard 39-inch.

A4435—Two-Piece Frock. The blouse was cut from one discarded frock, the skirt with bodice top was cut from another. Sizes 34 to 48.

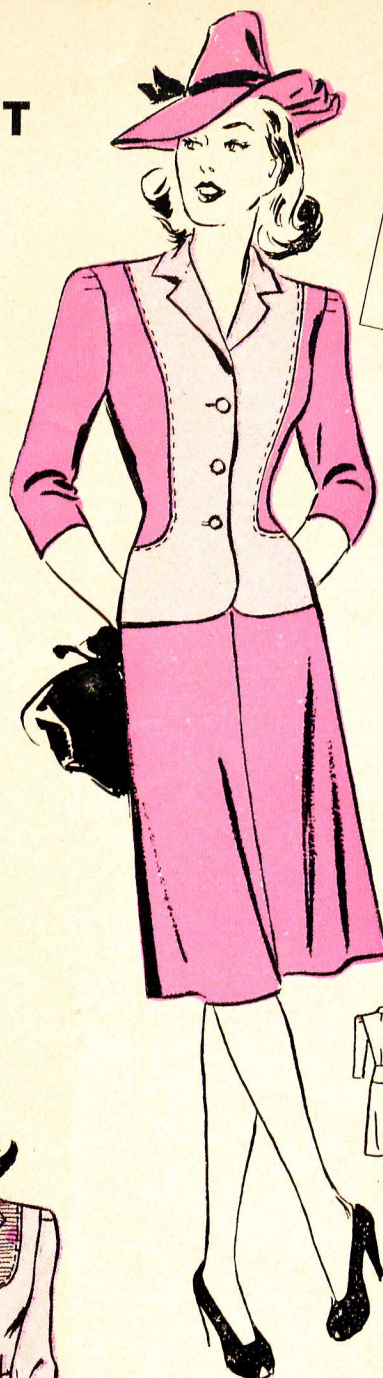
A4436—Frock. To replace a worn top, a new, smartly styled top was cut from an unused skirt. Sizes 14 to 42. Size 16, $1\frac{7}{8}$ yards 39-inch and $1\frac{3}{8}$ yards contrast.

A4430—Frock. If you've spoiled the front of a dress try this new vestee effect. Sizes 34 to 48. Size 36, $3\frac{1}{4}$ yards 39-inch and $\frac{5}{8}$ yard contrast.

A4426—Two-Piece Frock. A new neckline cut from a remnant brought this jacket up to date. Sizes 11 to 17. Size 13, 3 yards 39-inch and $\frac{3}{8}$ yard contrast.

A4453—Two-Piece Frock. Recut an outmoded jacket—add a new front cut from another skirt. Sizes 12 to 20. Size 16, $2\frac{7}{8}$ yards 39-inch and $\frac{7}{8}$ yard contrast.

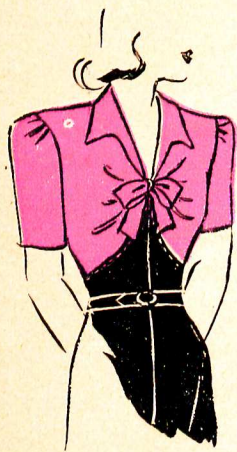
A4470—Frock. Up-to-the-minute! Made partly from fabric salvaged from old frock. Sizes 12 to 40. Size 16, 2 yards 39-inch and $1\frac{3}{8}$ yards contrast.



A4453



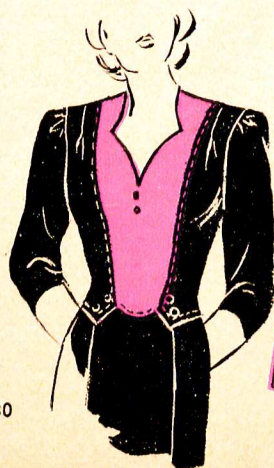
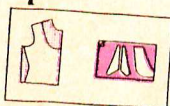
A4470



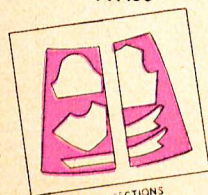
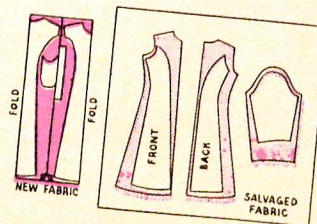
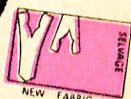
A4436



A4426



A4430



BODICE SECTIONS
FROM OLD SKIRT

JUMPER DRESSES GO EVERYWHERE . . .



A4492

A4476

A4545

A4476 — Jumper Frock. Sizes 12 to 20. Size 16, jumper, $1\frac{5}{8}$ yards 54-inch; blouse, 1 yard contrast.

A4496 — Jumper Frock. Sizes 8 to 16; 11 to 17. Size 13, jumper, $2\frac{3}{8}$ yds. 54-in.; blouse, 2 yds. 35-in.

A4545 — Jumper Frock. Sizes 11 to 17; 12 to 18. Make the jumper of plaid wool or rayon, the blouse contrasting.

A4502 — Two-Piece Frock. Sizes 11 to 17; 12 to 18. Size 13, $2\frac{1}{4}$ yds. 54-in.; $\frac{3}{8}$ yd. 35-in. contrast.

A4491 — Two-Piece Frock. Sizes 12 to 20; 30 to 40. Size 16, $2\frac{5}{8}$ yds. 54-in. Choose gabardine or flannel.

A4477 — Jumper Frock. Sizes 34 to 46. Size 36, jumper, $1\frac{3}{4}$ yards 54-inch, blouse $2\frac{1}{8}$ yards 35-inch.

A4335 — Two - Piece Frock. Smart pleating gives walking ease. Sizes 12 to 20.

A4492 — Two - Piece Frock. Sizes 34 to 44. Size 36, $2\frac{5}{8}$ yards 54-inch; $\frac{3}{4}$ yard 35-inch.

A4476

... THE TWO-PIECER TAKES THE SPOTLIGHT



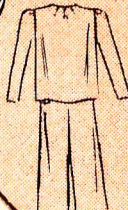
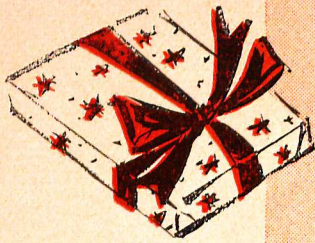
In the center of the stage and winning loud applause are 1943's outstanding members of the two-piece family . . . the crisp, business-like suit-dress, round-the-clock favorite of smart women everywhere . . . the forthright and unaffected jumper frock, beloved of the junior miss; beloved, also, of her elder and more sophisticated sister.

Versatile stars, these! Take, first, the suit-dress. It stands on its own without blouse or dickey. But by changing the character of your accessories, having them frilly or tailored, as the occasion may require, you've a basic dress that will take you to the office in the morning and furlough-dating in the evening. No wonder it gets a hand!

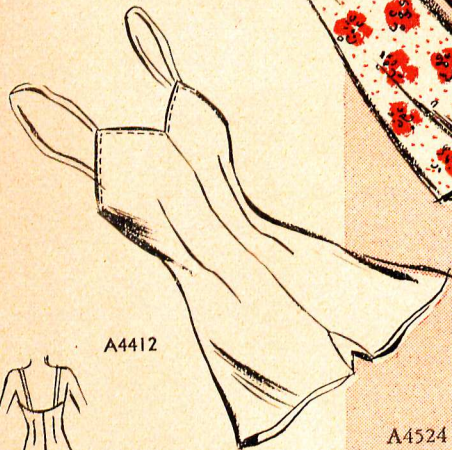
The jumper wins by force of personality. There's something so refreshing . . . so youthful about a jumper! You may vary its blouses to your heart's content. Or wear it with sweaters. (It's smart to contrast blouse and jumper.) If you're given to "hurry-up" dressing, you'll find your back, front or side buttoning jumper the easiest frock in the world to hop into. In two shakes of a lamb's tail you can not only be dressed but *look well-dressed*.

Your jumper may be made of any fabric. Rayon flannel, gabardine, corduroy are all good choices. But, best of all . . . try converting one of last year's dresses into a jumper. Take one which is slightly worn in the sleeves and under-arm parts. Just cut out the sleeves and worn under-arm portions, cut the neckline into a becoming shape and lo and behold, you have a bewitching jumper! Any of the jumper patterns illustrated on these pages may be used in this way.

STREAMLINED AND FUNDAMENTAL



A4524



A4412



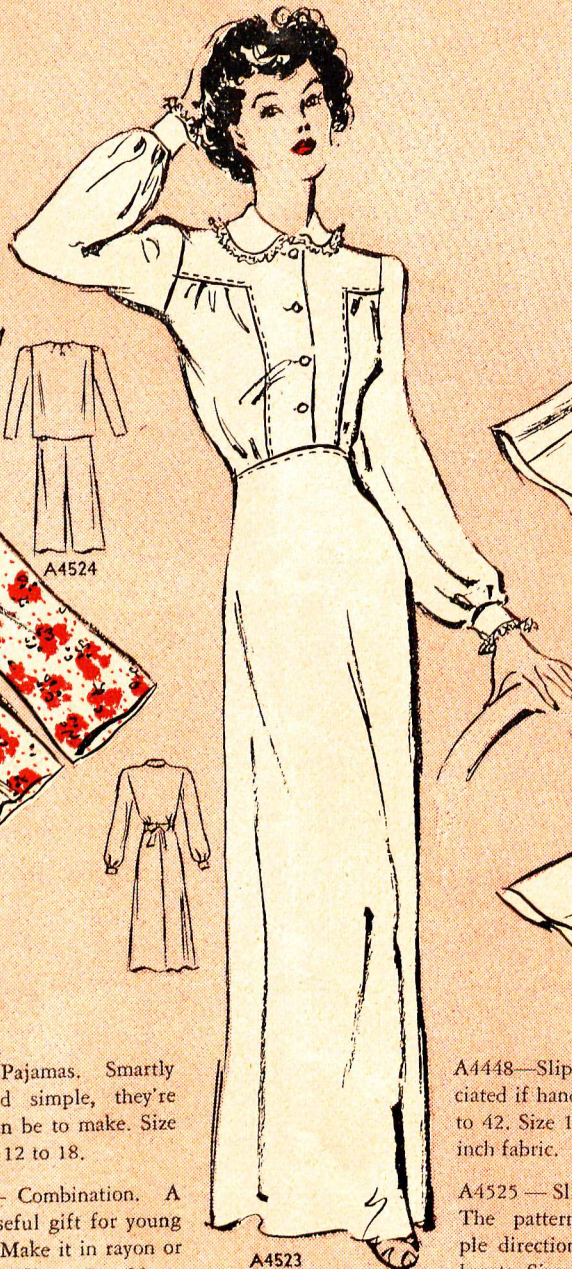
A4524 — Pajamas. Smartly styled and simple, they're easy as can be to make. Size 11 to 17; 12 to 18.

A4412 — Combination. A dainty, useful gift for young and old. Make it in rayon or fine cotton. Sizes 12 to 20.



A4199

A4199 — Bathrobe (or negligee). Sizes small (32-34), medium (36-38) and large (40-42). Use flannel or a dainty cotton or rayon.



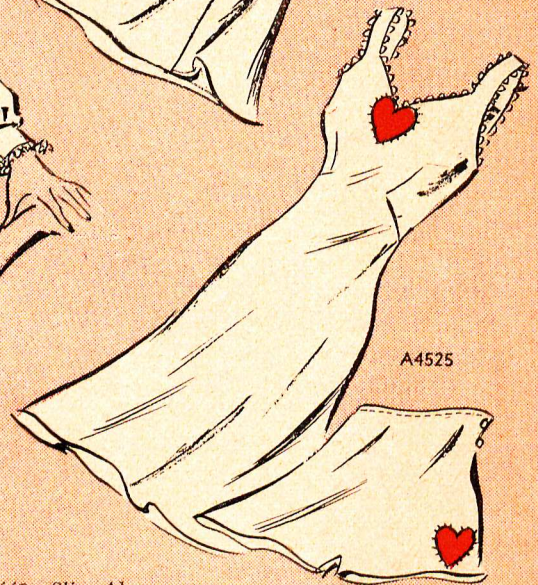
A4523

A4523 — Nightgown. A really super gift. Lovely in rayon crepe or flannelette. Sizes 12 to 40. Size 16, 3¾ yards 39-inch.

A4526 — Slip. A wraparound for figures on the "Juno-esque" side. Transfer for embroidery is included in pattern. Sizes 32 to 50.



A4448



A4525

A4448 — Slip. Always appreciated if hand made. Sizes 12 to 42. Size 16, 17½ yards 39-inch fabric.

A4525 — Slip and Panties. The pattern contains simple directions for applique hearts. Sizes 14 to 42.



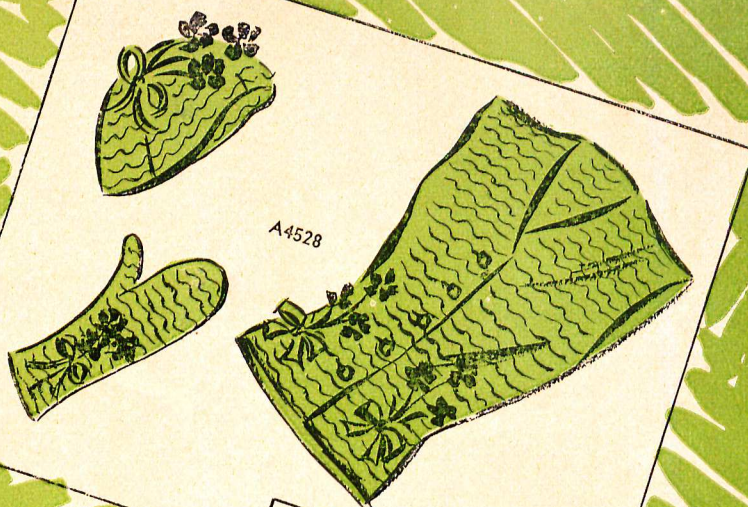
A4526



GIFTS YOU CAN MAKE

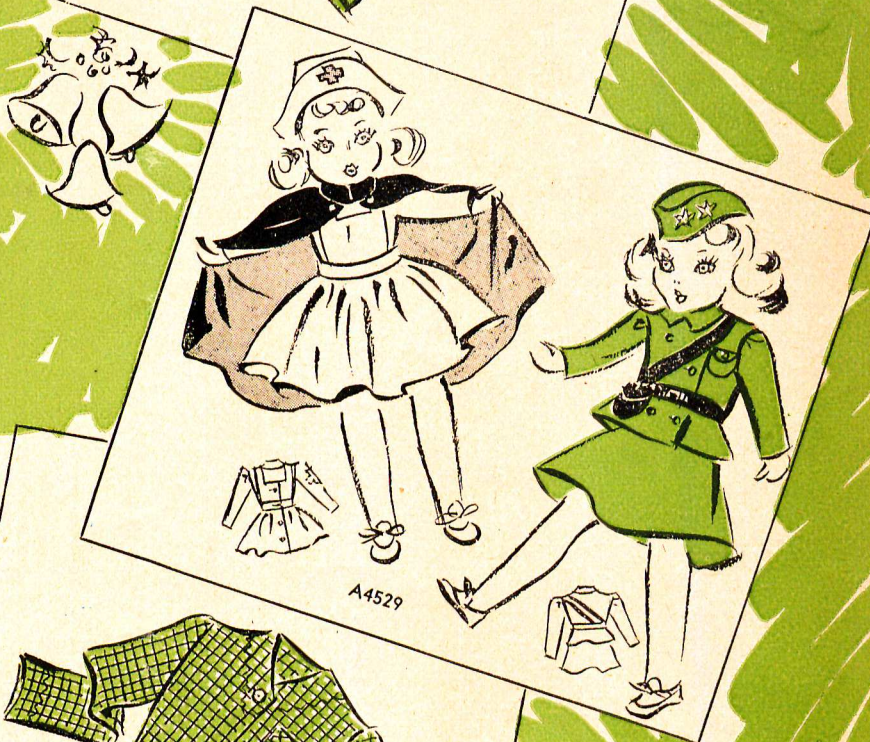


A4527—Boys' and Men's Ties. Make him a tie in his favorite color! A smart four-in-hand or a dressy bow tie. Here are the simplest directions for cutting, stitching. For individual yardages see pattern.



A4528—Vestee, Calot and Mittens. That skating-mad junior miss will give three rousing cheers for this trio. In novelty wool with appliqué decorations. Sizes 11 to 17, 12 to 18. Size 13, set, 1 yard 54-inch.

A4529—Dolls' Clothes. Delight her with a wardrobe of smart uniforms for her dolly. Red Cross Nurse with cape and cap . . . A.W.V.S. uniform with cap. Sizes 14 to 22 inches. For yardages see pattern.

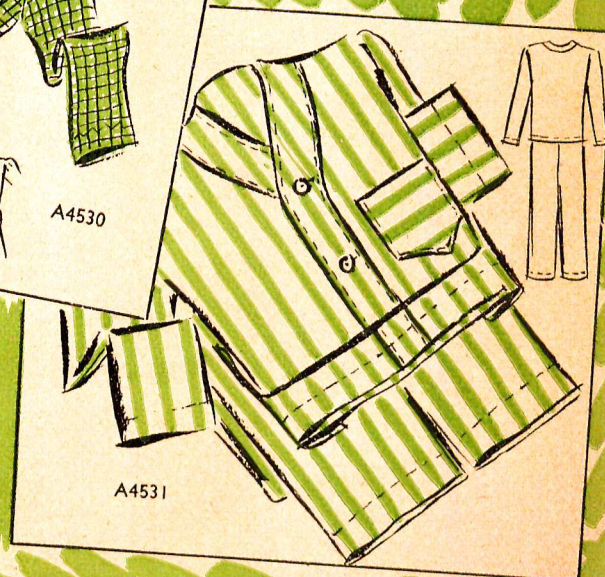
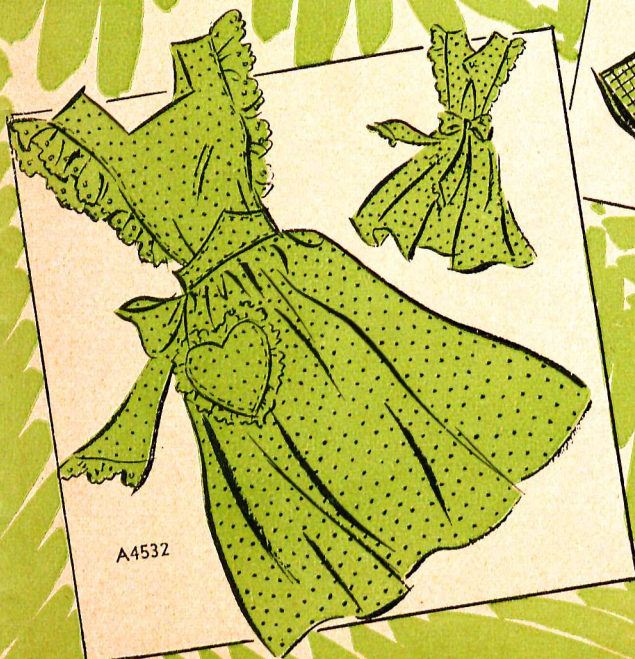


A4532—Apron. To please a young housewife . . . this dainty tea apron is ruffled just like a candy box. Make one for yourself and one for a gift. Sizes small (32-34), medium (36-38), large (40-42).

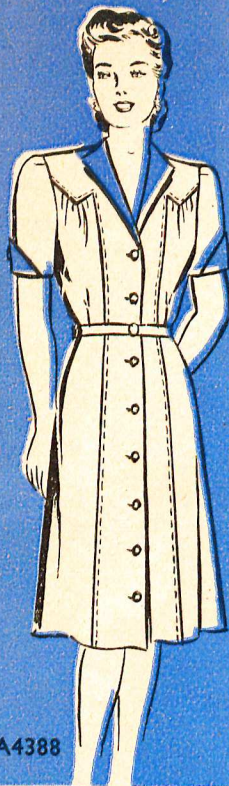
A4530—Pajamas. For either boy or girl. Simply made, they make a welcome gift. They're so comfy to wear. Use a checked or plain color broadcloth or rayon. Sizes 2 to 12.



A4531—Pajamas. The perfect gift for Dad! And a blessing for Mother, too . . . because, handmade, they withstand so many launderings. Men's sizes A, B, C, D (34-38); boys' sizes, 6 to 14.



WOMEN IN VERY



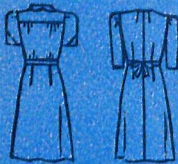
A4388



A4346



A4427



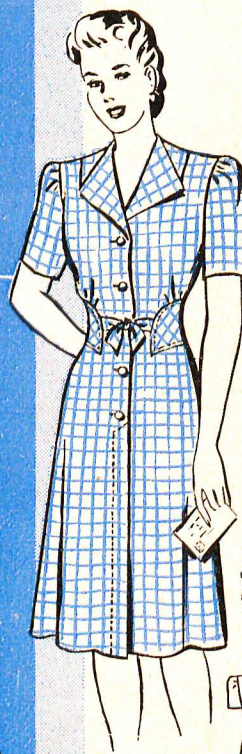
A4318



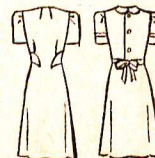
A4417



A4313



A4326



A4457

A4388—Frock. Yoke and front panel are in one piece. Sizes 34 to 48. Size 36, $3\frac{3}{8}$ yards 35-inch and $\frac{1}{2}$ yard contrast.

A4346 — Frock. Sleek-hipped front, one-piece back. Easy to make. Sizes 36 to 50. Size 36, $3\frac{7}{8}$ yards 35-inch.

A4427—Frock. Use contrast on this button-front. Sizes 34 to 48. Size 36, $3\frac{1}{2}$ yards 35-inch and $\frac{5}{8}$ yard contrast.

A4318—Frock. Simply cut, with front panel, flattering neckline. Sizes 36 to 50. Size 36, $3\frac{7}{8}$ yards 35-inch.

A4417—Frock. Low, curving bodice lines make naught of your hips. Sizes 34 to 48. Size 36, $3\frac{3}{8}$ yards 35-inch.

A4313—Frock. Softly cut with smooth-fitting front panel and yoke. Sizes 34 to 48. Size 36 takes 4 yards 35-inch.

A4326—Frock. The set-in girdle effect chisels your waist smartly. Sizes 34 to 48. Size 36, $3\frac{1}{2}$ yards 35-inch.

A4457—Frock. Wide belt and front skirt gathers are very youthful. Sizes 12 to 20. Size 16, $3\frac{3}{8}$ yards 35-inch.

A4458 — Frock. This attractive wraparound spreads out over the ironing board. Use a cotton print. Sizes 14 to 42.

A4312—Frock. High patch pockets enliven this shirtwaister. Sizes 12 to 40. Make it in novelty cotton or rayon.

A4395—Frock. The smart square yoke can be made from salvaged fabric, in a contrast color. Sizes 12 to 20.

ESSENTIAL SERVICE



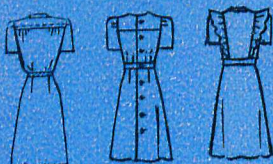
A4312



A4395



A4440



A4458



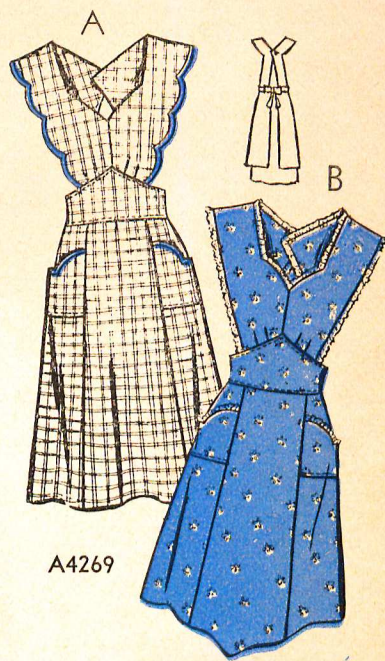
A4455



A4459



A4419



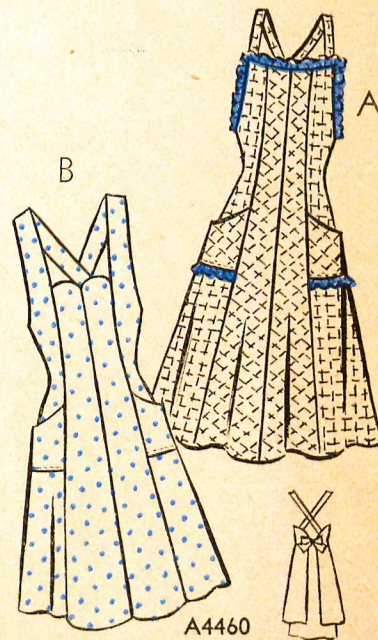
A4269

A4440—Frock. There's accent on youth in the pert ruffles. Sizes 14 to 42. Size 16, $3\frac{3}{4}$ yards 35-inch.

A4455—Frock. Shoulder yokes, pointed neck, fitted waistline are young! Sizes 12 to 20. Size 16, $3\frac{3}{4}$ yards 35-inch.

A4459—Smock. You can dress it up with gaily appliquéd pockets. Sizes small (32-34), medium (36-38), large (40-42), extra large (44-46).

A4419—Frock. Youthful princess style, designed to set off a young neck, accents a young waist. Sizes 12 to 20.



A4460

A4460—Aprons. Sizes, small (32-34), medium (36-38), large (40-42). Small size, View A, 3 yards 35-inch; view B, $2\frac{1}{2}$ yds. 35-in.

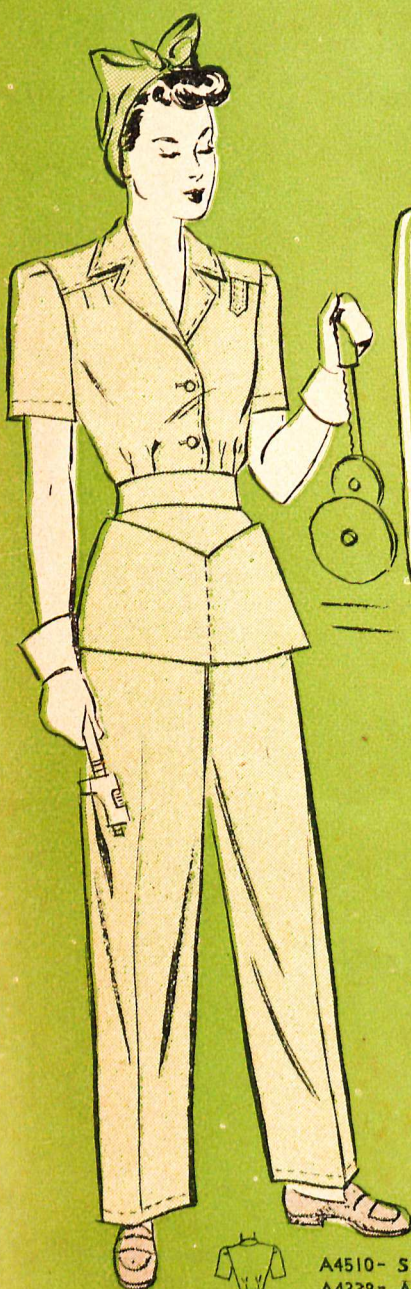
ON THE ASSEMBLY LINE

A4510—Slacks Suit. Sizes 12 to 40. Size 16, $4\frac{3}{8}$ yards 35-inch.
A4338—Apron. Sizes small, medium, large. Bonnet included.

A4509 — Overalls and Blouse. "Regulation." Fit beautifully. Sizes 12 to 20. Size 16, overalls, $3\frac{1}{2}$ yards 35-inch; blouse, $2\frac{1}{4}$ yards.

A4512* — Work Uniform. Make this of stout denim, and no grease or grime can touch you. It fits closely at ankles. Sizes 14 to 20.
* Department of Agriculture design.

A4513* — Coverette. A comfortable wraparound with button-up anklets. Make it up in a strong woven-stripe fabric. Sizes 12 to 40.
* Department of Agriculture design.



A4510- SLACKS SUIT
A4338- APRON



A4509



A4512



A4513

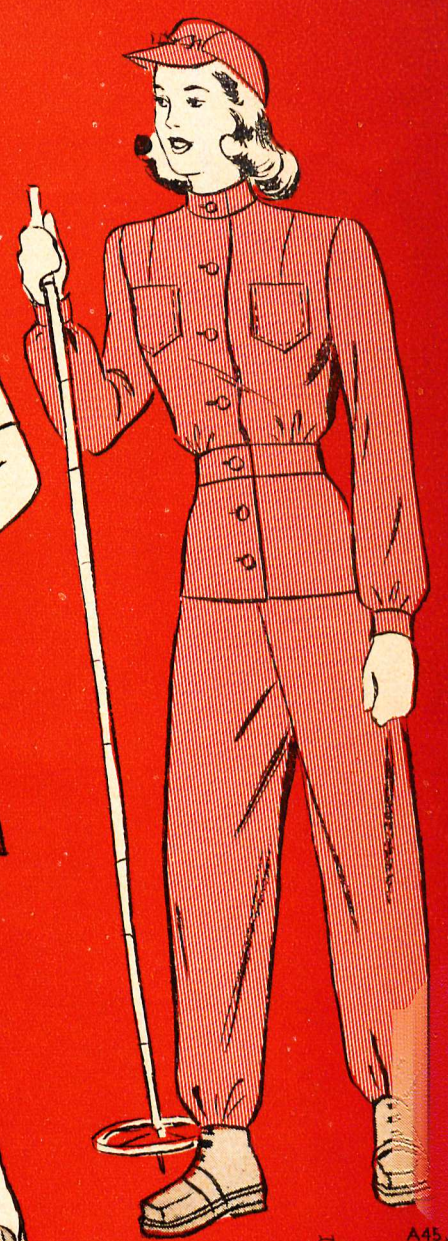
ON THE HOME FRONT

A4508 — Jacket. Sizes 12 to 40.
Size 16, $2\frac{1}{4}$ yards 39-inch fabric.
A4510 — Slacks Suit. Sizes 12 to 40.
Size 16, $4\frac{1}{8}$ yards 35-inch.

A4437 — Frock. This button-front is perfect for home or factory . . . even office wear. Size 34 to 48.
Size 36, 3 yards 39-inch.

A4507 — Apron. (Utility pockets for tools or recipes.) Sizes small (32-34), medium (36-38), large (40-42). Small, $3\frac{1}{8}$ yards 35-in.

A4514 — Ski Suit. Have fun or work out in the cold, open spaces in this snug suit. Make it of water repellent cloth. Sizes 12 to 20.



A4514



A4508-JACKET
A4510-SLACKS SUIT

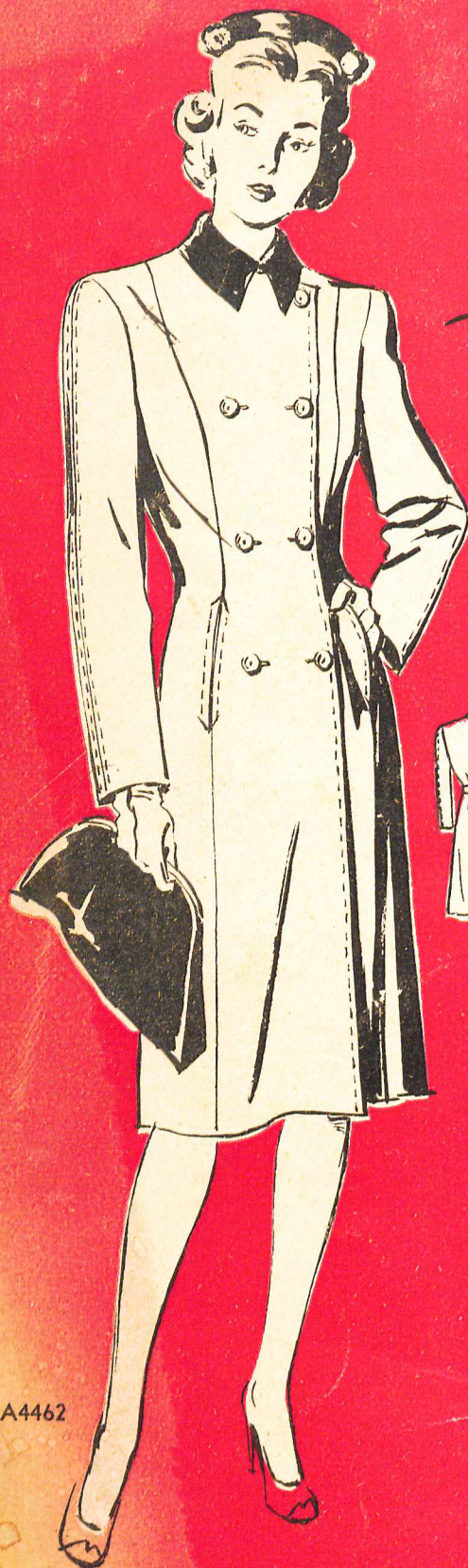


A4437



A4507





A4462



A4508—JACKET

A4483—SKIRT

A4462—Coat. Smartly fitted; designed with an eye to the military. Use a firm twill or herringbone mixture with velveteen collar. Sizes 11 to 17, 12 to 20.

A4508—Jacket. An ideal "topper" for sweaters 'n' skirts or frocks. Have it in a bright hannel, gabardine or corduroy. Sizes 12 to 40. Size 16, $1\frac{1}{2}$ yards 54-inch.

A4483—Skirt. Wear it with blouses or sweaters. It's sleekly paneled with two box pleats in front for plenty of action. Waist sizes 26 to 36.

A4482—Jacket and Skirt. Face the world proudly in this smart suit with a jacket that buttons way up to the neck. Sizes 12 to 20.



A4482